

How are we doing
and where do we go
from here?

Strategies For Change

thn.org

Housekeeping

- Do you have the doc?
- Please save the questions to the end
- During the activity, please ask for help if you get stuck



Spread the word!

- Texas Homeless Network
@TXHomeNet
- Conference Hashtag
#EndTXHomelessness

- Website
www.thn.org
- Facebook
<https://www.facebook.com/TexasHomelessNetwork/>
- Instagram
<https://www.instagram.com/xhomenet/>



Agenda

Welcome

HMIS & Data

Overview of Reports

Activity

Data Visualization

Q & A



About the Speakers

Victoria Lopez- HMIS Program Coordinator

Jesus DeLeón-Serratos- HMIS Program Manager

Kristin Zakoor- Data Coordinator

Antonio Kufoy- HMIS Data Specialist

Marissa Ortega- Data VISTA



Learning Objectives

1. Familiarize yourself with available reports
2. Practice working with and analyzing a data set
3. Learn about different data visualization techniques



Homeless Management Information System (HMIS) & Data

How to enter the data



Why HMIS & Data?



Why HMIS?

- Less time to intake clients
 - More time to connect and uncover needs of the client
- Centralized data storage
 - Secure
 - Efficient
- Built-in reports
 - Annual Performance Report (APR)
 - System Performance Measure (SPM)
 - Consolidated Annual Performance and Evaluation Report (CAPER)



Why Data?

- Grow existing programs
- Uncover needs for future programs
- Make data-driven decisions
- Identify trends in your community



Reports

How to generate the data



Point-in-Time Count (PIT)



What is a Point-In-Time Count?

- A snapshot of how many homeless individuals are in your community on a single day.
- On the local level, point-in-time counts help communities plan services and programs to appropriately address local needs, measure progress in decreasing homelessness, and identify strengths and gaps in a community's current homelessness assistance system.
- If interested in participating in PIT contact: Kristin@thn.org



Why we count...



FUNDING

- Eligibility to apply for CoC funds



EXTENT

- Trends of homelessness in the local area
- Characteristics of those experiencing homelessness
- New programs



AWARENESS

- Raise community awareness
- Raise political awareness



PIT Data Dive...

- Racial disparities
- Identify if a certain population is more likely to become homeless
- Where people are becoming homeless
- Sheltered vs Unsheltered
- Closer look at demographic data points



When is the PIT conducted?



2019 PIT Count

- TX BoS CoC will conduct the count on **January 24th**.
 - Alternate date January 28th



Housing Inventory Count (HIC)



PIT + HIC = ❤️



HIC Details

The Project Types included in the HIC are:

- Emergency Shelter (ES)
- Transitional Housing (TH)
- Permanent Housing (PH)
 1. Permanent Supportive Housing (PSH)
 2. Rapid Re-housing (RRH)
 3. Other PH (OPH) – consists of PH – Housing with Services (no disability required for entry) and PH – Housing Only, as identified in the 2014 HMIS Data Standards)

- Beds and units in the HIC must be dedicated to serving Category 1, literally homeless persons, or for permanent housing projects, dedicated for persons who were Category 1, literally homeless at entry.
- To be completed on night of PIT Count, **1/24/19**



HIC Data Dive...

- Utilization rates
- Types of projects in your area vs the need
- Barriers to project entry (i.e. only have women+ family shelters in your area but have many homeless men seeking shelter)
- Number of permanent housing beds vs need



When is the HIC conducted?



2019 HIC

- TX BoS CoC will conduct the HIC on the night of the PIT count, **January 24th**.



Annual Performance Report (APR) & Consolidated Annual Performance Evaluation Report (CAPER)



APRs & CAPERs

Read

- What's the data say?

Analyze

- Are there areas always missing?
- What patterns do you see?

Know your
Guidebook

- SAGE APR guidebook
- SAGE CAPER guidebook

Run

- Monthly, Quarterly, Yearly
- Be aware that report end dates may affect the data you are seeing in the report.



APR/CAPER Changes and Announcements

- APR Detail Export
 - Added CSVs in the Detail Export to match up with Q13, Q14, Q19, Q21
 - Added Data Issue Reason column to Q2
- APR Export 6.2
 - New Q22c: Move-In Date for PSH programs Oct. 2018



APR/CAPER Data Dive...

- Move in dates – Have the dates been entered correctly? Look at length of time between enroll date and move in date.
- Exit Destinations – How many clients are being successfully exited?
 - “Other” is not considered a successful exit.
- Annual Assessments – Keep on top of these! Useful in documenting change in income for client.



System Performance Measures (SPMs)

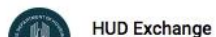




CoC System Performance Measures Overview Video 10/1/15

3,405 views

1 0 SHARE



HUD Exchange

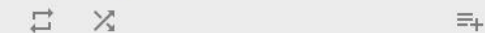
SUBSCRIBED 626

Advertising Business

Privacy Terms Settings

HUD Homeless System Performance Measures

Matt Schnars · 1 / 8



- PERFORMANCE MEASURES** 6:55 HUD Exchange
- MEASURE 5: NUMBER OF PERSONS WHO BECAME HOMELESS FOR THE FIRST TIME** 6:19 HUD Exchange
- MEASURE 3: NUMBER OF HOMELESS PERSONS** 7:13 HUD Exchange
- MEASURE 1: LENGTH OF TIME PERSONS REMAIN HOMELESS** 9:29 HUD Exchange
- MEASURE 2: EXTENT TO WHICH PERSONS RETURN TO HOMELESSNESS** 7:09 HUD Exchange
- MEASURE 7: SUCCESSFUL PLACEMENT FROM STREET OUTREACH AND RETENTION OF PLACEMENT** 11:01 HUD Exchange

MEASURE 1: LENGTH OF TIME PERSONS REMAIN HOMELESS 9:29

CoC System Performance Measure #1 Video: Length of...

HUD Exchange

2.8K views

FOX5 Surprise Squad: Hardworking Wife Surprised...

FOX5 Las Vegas

Recommended for you

FOX 6:14

Exploring the roles of performance measurement...



What elements are considered for SPMs?

2017 Data Standards Element Number	Element Name
2.4.2	Project Type
2.5	Method of Tracking Emergency Shelter Utilization
2.6	Federal Partner Programs and Components
3.3	Date of Birth
3.10	Project Start Date
3.11	Project Exit Date
3.12	Destination
3.917 A	Living Situation
3.20	Housing Move-In Date
4.2	Income & Sources



What programs are considered for SPMs?

Emergency Shelter

Safe Haven

Transitional Housing

Street Outreach

Permanent Supportive Housing

Rapid Re-Housing

	Measure 1: Length of Homelessness	Measure 2: Returns to Homelessness	Measure 3: Number of People	Measure 4: Income	Measure 5: First-time Homelessness	Measure 7: Successful Placements
Client Universe: Each measure looks at a different pool of clients – clients who entered, exited, or were active in any of the included project types during the reporting period or prior periods	Active during the reporting period	Exited to a permanent destination 1 and 2 reporting periods prior	Active during the reporting period	Active during the reporting period	Entered a project during the reporting period	Exited a project during the reporting period
Data Analysis Period: CoCs will need to consider data quality for the full data analysis period to fully understand the report results	Reporting period, plus a 2-year lookback	1 and 2 periods ago through current reporting period	Reporting period	Reporting period	Reporting period, plus a 2-year lookback	Reporting period
Project Type Groupings: Some measures look at one project at a time, while others cluster multiple project types together. If enrollments overlap, it may have an impact on results	ES and SH ES, SH, and TH	SO ES SH TH PH	ES SH TH ES, SH, and TH	SH, TH, RRH, and PSH (CoC funded only)	ES, SH, and TH ES, SH, TH, and PH	SO ES, SH, TH, and RRH PSH and OPH



Is Homelessness Rare, Brief, and Non-recurring in Your CoC?

Take the HUD System Performance Measures to Task!

Select Your CoC

TX-607 Texas Balance of Stat..

Show YoY Change Indicator

Show Unfavorable

Show/Hide Values

Show

Instruction: Use the filters to the left to dynamically adjust the visualization to show your community, year over year change, and the metric values and to compare 2016 and 2015 Homeless System Performance Measures for each Continuum of Care.

Unfavorable ▼ Favorable ▲

Selected CoC: **TX-607 Texas Balance of State (BoS) CoC**

2015 | 2016

Decription: The Visualization was created using data on homeless system performance measure information by Continuum of Care since FY 2015 (see source link at bottom right).

CoCs were given the option of providing updates to their FY 2016 data in the FY 2017 submission process which may result in some changes to the existing FY 2016 data. For more information on what CoCs are required to submit for system performance measures visit the HUD Exchange

Abbreviations:

SPM - System Performance Measures

CoC - Continuum of Care

SO - Street Outreach

ES - Emergency Shelter

SH - Safe Haven

TH - Transitional Housing

RRH - Rapid Rehousing

PH - Permanet Housing

Rare: SPM 3 & 5	Metric 3.2: # of Sheltered & Unsheltered Persons (From HMIS)		10,966	9,964
	Metric 5.1: # of persons entering ES & TH projects with no prior enrollments in HMIS (1st Time Homeless)	▼	1,646	1,686
	Metric 5.2: # of persons entering ES, TH, & PH projects with no prior enrollments in HMIS (1st Time Homeless)	▼	1,745	1,853
Brief: SPM 1	Metric 1.1: Average # of days persons are homeless in ES & SH projects		41 Days	40 Days
	Metric 1.1: Median # of days persons are homeless in ES & SH projects		14 Days	14 Days
	Metric 1.2: Average # of days persons are homeless in ES & TH projects	▼	64 Days	66 Days
	Metric 1.2: Median # of days persons are homeless in ES & TH projects	▼	19 Days	20 Days
Non-Recurring: SPM 2 & 7	Metric 2a: % Returns in 6 mths		9.4%	7.5%
	Metric 2a: % Returns in 12 mths (includes 6-month cohort)		14.3%	11.5%
	Metric 2b: % Returns in 24 mths (includes both 6 and 12-month cohort)		19.1%	16.0%
	Metric 7a.1: % Successfully placed in permanent housing destinations, temporary sheltered destinations, and some institutional destinations from SO	▼	67.2%	62.6%
	Metric 7b.1: % Successful exits to permanent housing from ES, TH, and RRH		30.9%	32.6%
	Metric 7b.2: % Successful exits/retention of permanent housing from PH		90.5%	91.8%

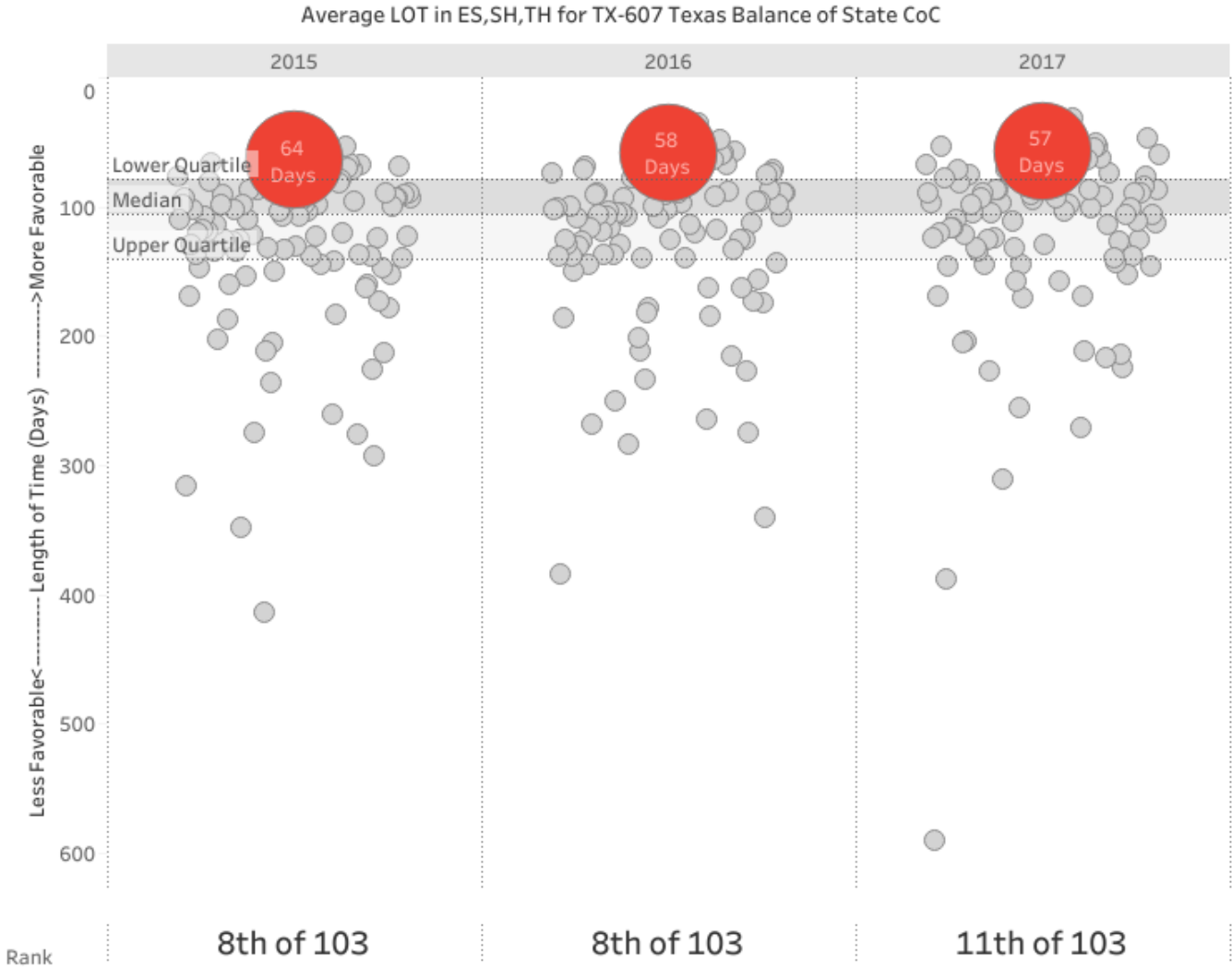


HUD System Performance Measure 1a Analysis

Length of Time Homeless

Select Your CoC
TX-607 Texas Balance of State CoC

Select Measure 1a Metric
Average LOT in ES,SH,TH





Activity

How to analyze the data

Keyboard Shortcuts

Need to know...

1. Copy selected cells
 - Ctrl+ C
2. Paste selected cells
 - Ctrl+ V
3. Cut selected cells
 - Ctrl+ X
4. Display find and replace
 - Ctrl+ F

Nice to know...

1. Extend the selection to the last cell right
 - Ctrl+ Shift+ Right arrow
2. Extend the selection to the last cell left
 - Ctrl+ Shift+ Left arrow
3. Extend the selection to the last cell up
 - Ctrl+ Shift+ Up arrow
4. Extend the selection to the last cell down
 - Ctrl+ Shift+ Down arrow



Useful tools

- Calculation snap-shot
- Filter
 - Finding and filling blank cells
- Freeze top row
- Sort
 - Primary and secondary sorts
- Conditional formatting
 - Deduplication



Pivot Tables and Charts

- Quick and easy way to analyze and display your data
- Multiple ways of looking at full data set or select cells
- Quick decision making
- Customization



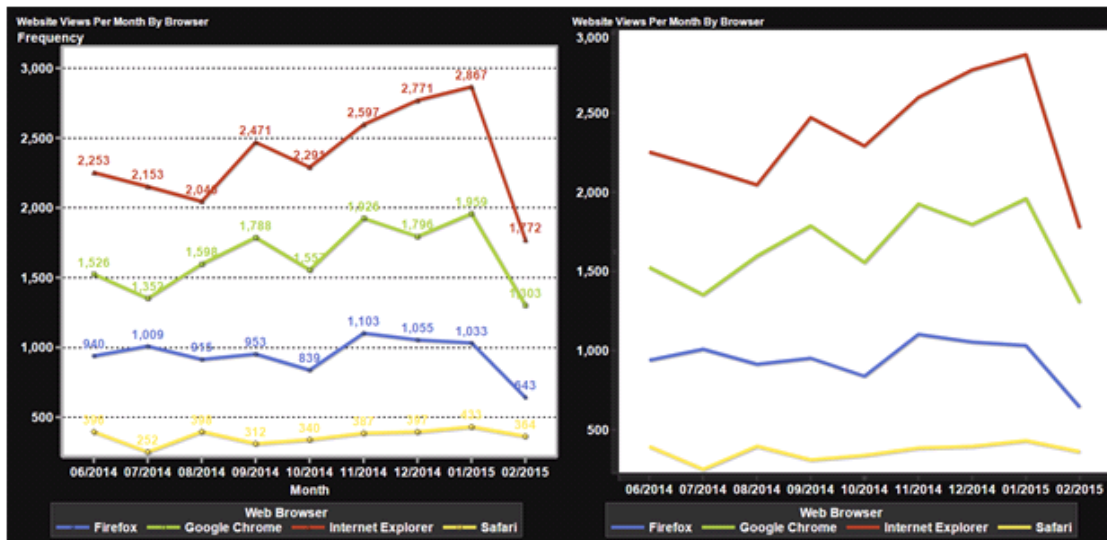


Data Visualizations

How to visualize the data

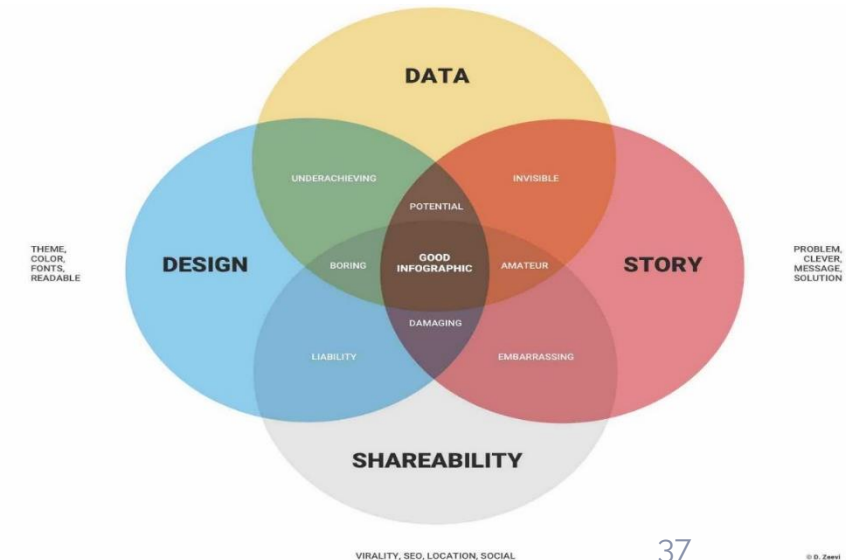
Best Practices

1. Know your audience
2. Provide Context
3. Keep visualizations simple and digestible



With Chart Junk

Without Chart Junk



The Raw Data

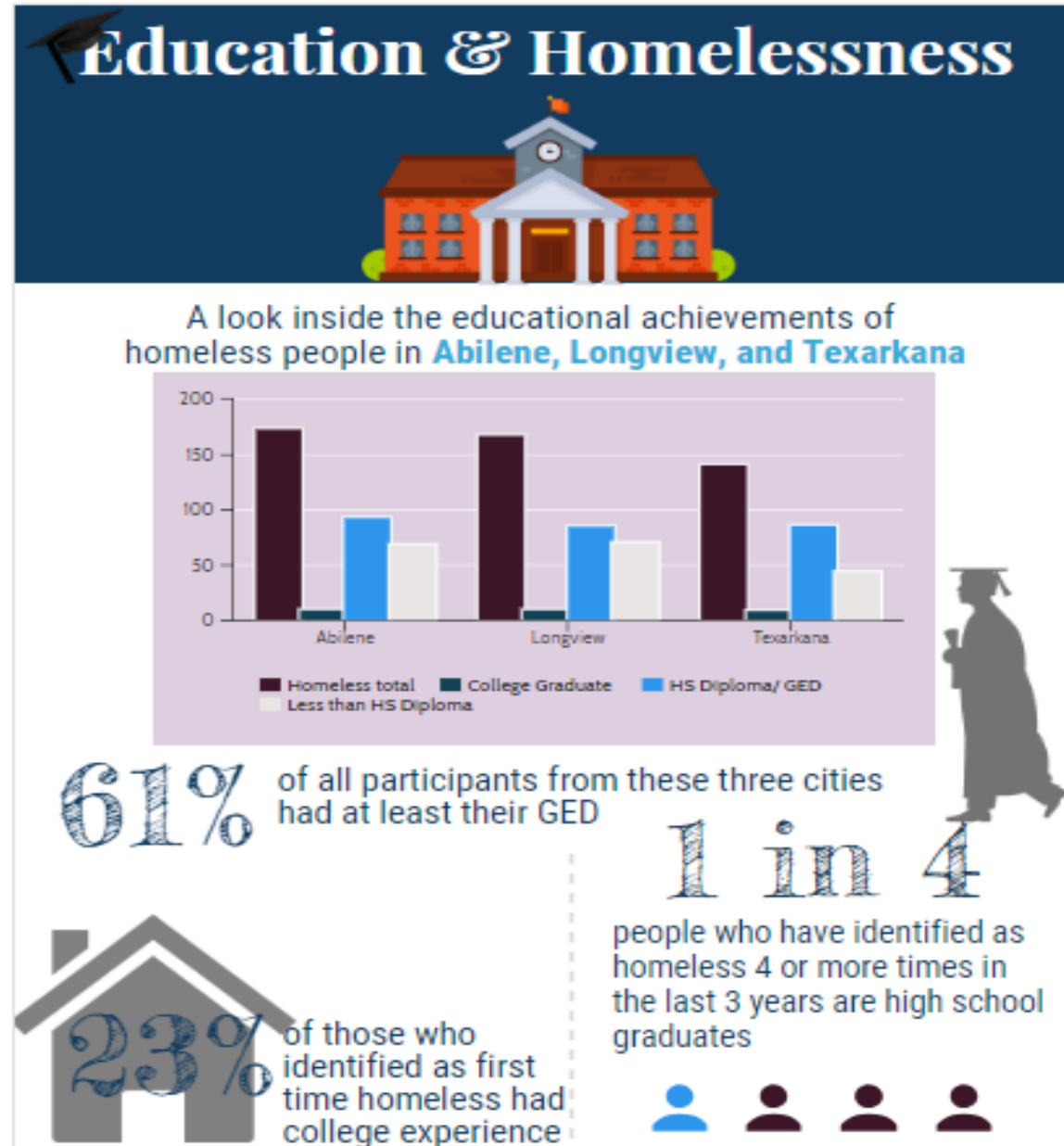
	A	B	C	D	E	F	K	L	M	N	O	P	Q	R	S	T	U
1	RESPONSE_ID	SURVEY	TYPE	ORGAN	PROJECT	HOUSEH	AGE	AGE_RA	RACE_A	RACE_A	RACE_B	RACE_N	RACE_V	RACE_O	ETHNIC	GENDEF	VET_ST
2	1706140702	PIT Shelter	IND	Salvation	Emergency Shelter		59						1		0	1	0
3	1862154824	PIT Shelter	IND	Salvation	Emergency Shelter								1		0	1	0
4	1989008869	PIT Shelter	IND	Salvation	Emergency Shelter								1		0	1	0
5	1039388836	PIT Unshe	IND					55-61			1				0	1	0
6	1825639344	PIT Shelter	IND	Families In	Families In Crisis-Kille		37						1		0	1	0
7	2136599377	PIT Shelter	IND	Salvation	Emergency Shelter		45						1			1	0
8	1691178242	PIT Shelter	IND	Randy San	Outreach Shelter		59						1		0	0	0
9	1515782206	PIT Shelter	HH	Women's	Women's	1.3E+09	17	Under 5	0	0	1	0	1		1	1	0
10	1981835812	PIT Shelter	HH	Women's	Women's	1.3E+09	47	Under 5	0	0	1	0	1		0	1	0
11	1091496027	PIT Unshe	IND				44			1					0	1	1
12	1223509042	PIT Unshe	IND				52	45-54					1		0	1	1
13	1759508352	PIT Shelter	IND	Paul's Pro	Paul's Project Emerg		54								1	1	0
14	1182631759	PIT Unshe	IND				32						1		0	0	0
15	1459093867	PIT Unshe	IND				44										1
16	1497243610	PIT Unshe	IND										1		1	1	0
17	1934206672	PIT Shelter	IND	Paul's Pro	Paul's Project Emerg		36						1		0	1	0
18	1785689739	PIT Shelter	IND	Salvation	Center of Hope ES		54						1		0	1	0
19	1688007215	PIT Shelter	IND	Randy San	Outreach Shelter		48				1				0	0	0
20	1762296684	PIT Shelter	IND	Bethany H	Bethany House Emer		62						1		1	1	0
21	1840215273	PIT Shelter	IND	New Hope	Transitional Housing		29						1		0	1	1



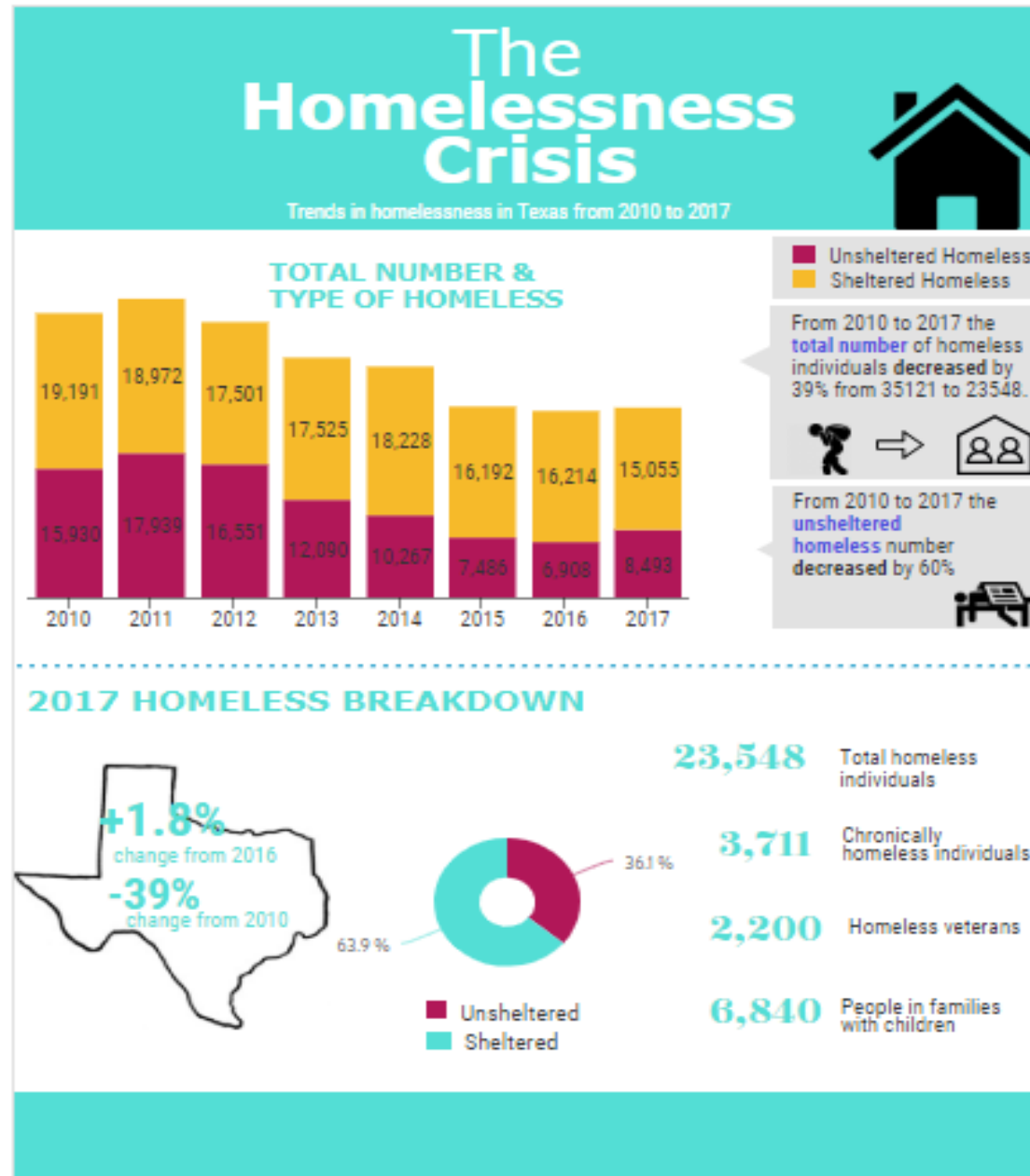
Infographic #1: General Public



Infographic #2: Internal Staff

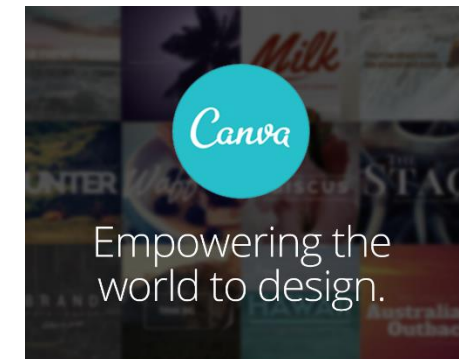


Infographic #3: Stakeholders



Free Platforms

- Infogram
- Venngage
- Canva
- Piktochart



Q & A



Contact Information

- Victoria Lopez- victoria@thn.org
- Jesus DeLeon Serratos- jesus@thn.org
- Kristin Zakoor- kristin@thn.org
- Antonio Kufoy- antonio@thn.org
- Marissa Ortega- marissa@thn.org



TX BoS CoC Conference Track

Thursday, September 27

- 10:30 AM – 12:00 PM: Adding to you HMIS Toolbox: Building a set of HMIS Resources and Strategies for Your Data, Troubleshooting, and Training Needs (Jesus DeLeon-Serratos & Victoria Lopez)
- 3:45 PM- 5:15PM: #Systems Change- The only Constant is Change (Tiffany Hart & Sophia Checa)

Friday, September 28

10:30 AM – 12:00 PM PATH Roundtable discussion
(Jesus DeLeon-Serratos & Victoria Lopez)

