



**TEXAS**  
Health and Human  
Services

# **LMHA 101: Working with the Local Mental Health Authority to End Homelessness**

---

**Helen Eisert, LCSW-S  
Behavioral Health Services  
Mental Health Programs, Planning, and Policy**

# Today's Agenda

---

- **Purpose of Local Mental Health Authorities (LMHA)**
- **Access and levels of care at an LMHA**
- **LMHA Role in the Homeless Crisis Response System**
- **Partnering with the LMHA in direct services and programs**



**TEXAS**  
Health and Human  
Services

# Behavioral Health Strategic Plan



TEXAS  
Health and Human  
Services



## Gap 12

- Access to safe, decent, affordable housing and an array of supportive services is a social determinant of health.



**TEXAS**  
Health and Human  
Services

# Participant Polls

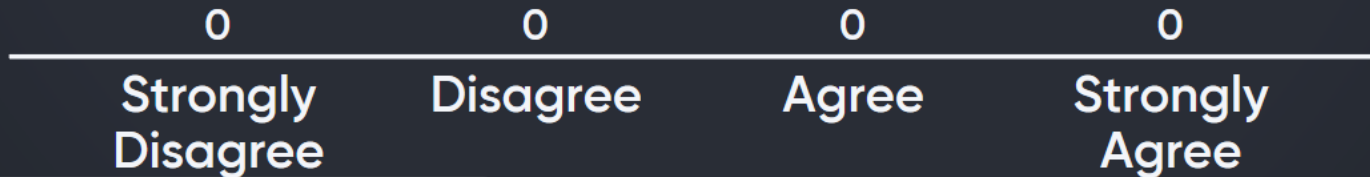
---

**Take out your cell phone and go to:  
[menti.com](https://www.menti.com)**

Go to [www.menti.com](https://www.menti.com) and use the code 77 81 90

# I understand the purpose of a Local Mental Health Authority.

 Mentimeter



Slide is not active

Activate

 0

Go to [www.menti.com](https://www.menti.com) and use the code 77 81 90

# What word best describes working with the Local Mental Health Authority?

 Mentimeter



Slide is not active

Activate

 0



TEXAS  
Health and Human  
Services

# Discussion

---

- Understanding the purpose and scope of the LMHA can help you to better partner with them.
- The LMHA can be a strong advocate to end homelessness, especially for those with behavioral health needs.

# Community Mental Health Centers

---



TEXAS  
Health and Human  
Services

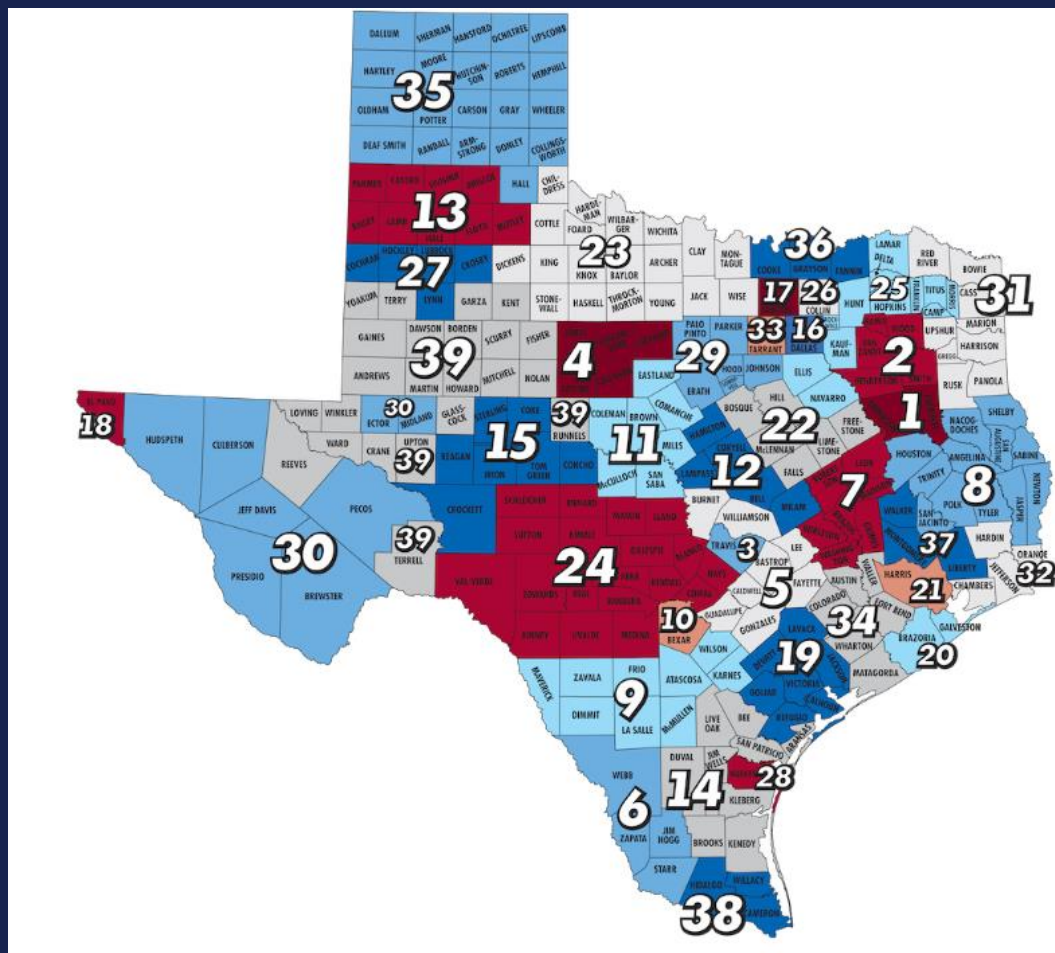
- In 1965, the Mental Health and Intellectual Disabilities Act:
  - ▶ Established a state agency to operate legislatively directed services for people with mental illness and intellectual disabilities.
  - ▶ Authorized the creation of Community Centers to serve as local agencies that would partner with the state and federal government to develop community-based services as alternatives to institutional care.
- Today, there are 39 Community Mental Health Centers across the state that also serve as Local Mental Health Authorities





TEXAS  
Health and Human  
Services

# Across the State . . .



Source: <https://txcouncil.com/about-community-centers/state-map-of-service-areas/>



# LMHA: A Quasi-Governmental Agency

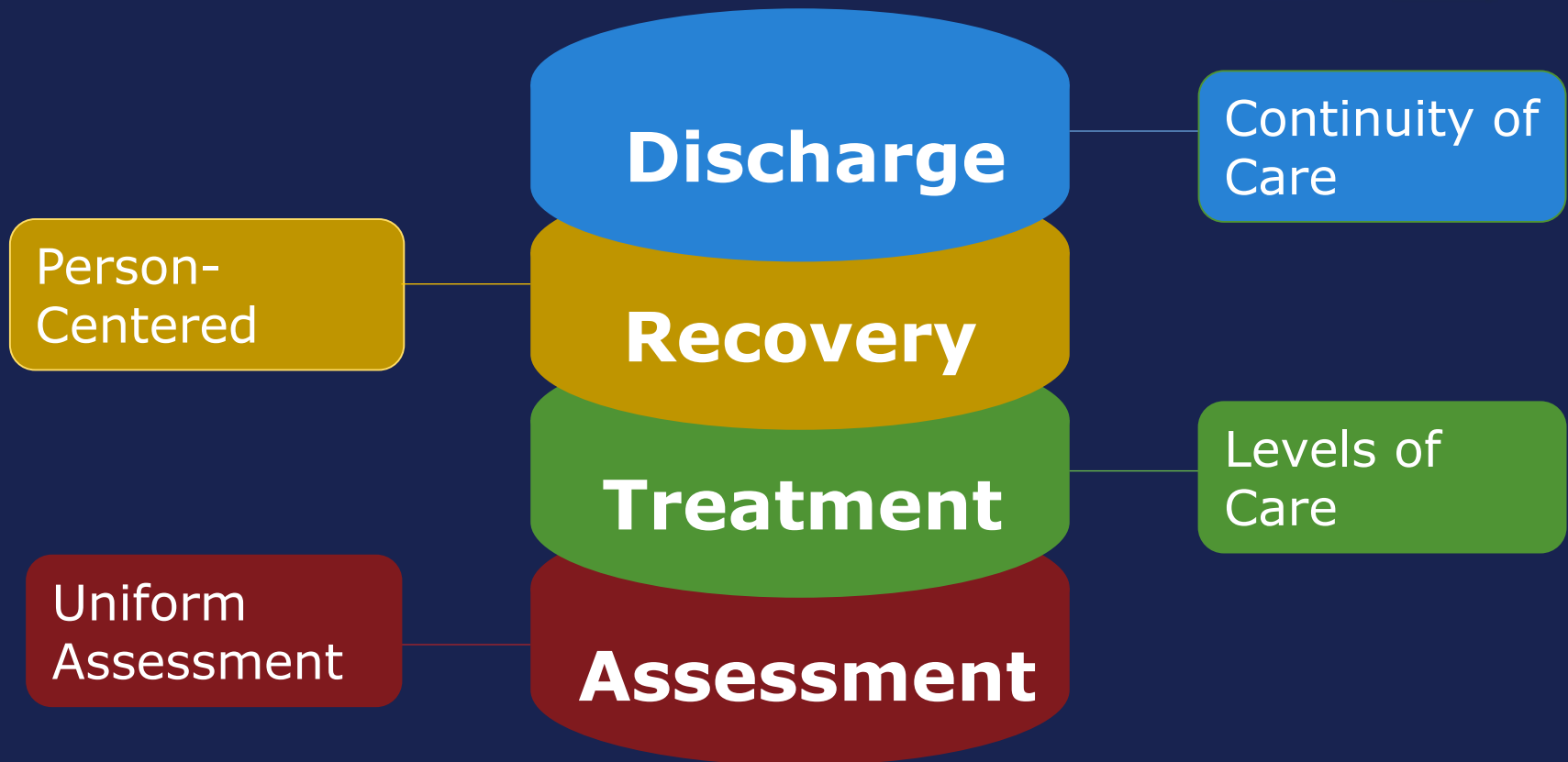
---

- The State Authority over mental health and intellectual disability services (HHSC) delegates its authority to the 39 LMHAs and Local Intellectual and Developmental Disability Authorities (LIDDAs).
- Both LMHAs and LIDDAs serve as the primary point of entry for publicly funded programs.
- Provider of last resort.

# Behavioral Health Systems of Care in Texas



**TEXAS**  
Health and Human  
Services





TEXAS  
Health and Human  
Services

# Uniform Assessment

---

- The Adult Needs and Strengths Assessment is the primary tool utilized to determine someone's level of care.
  - ▶ Documents can be found at:  
<https://hhs.texas.gov/doing-business-hhs/provider-portals/behavioral-health-services-providers/comprehensive-providers/adult-needs-strengths-assessment>
  - ▶ Scores of 0, 1, 2, and 3
  - ▶ One Residential Stability Item

# Advocating at the Individual Level

---



TEXAS  
Health and Human  
Services

- There is a Level of Care (LOC) Recommended and a LOC Authorized.
- A worker can provide collateral information to help the assessor provide an updated score on the Uniform Assessment (e.g. client has a brain injury and is unable to remember specifics of when they were in jail or in the hospital).
- Baseline versus now – what is different?

# Common Levels of Care



TEXAS

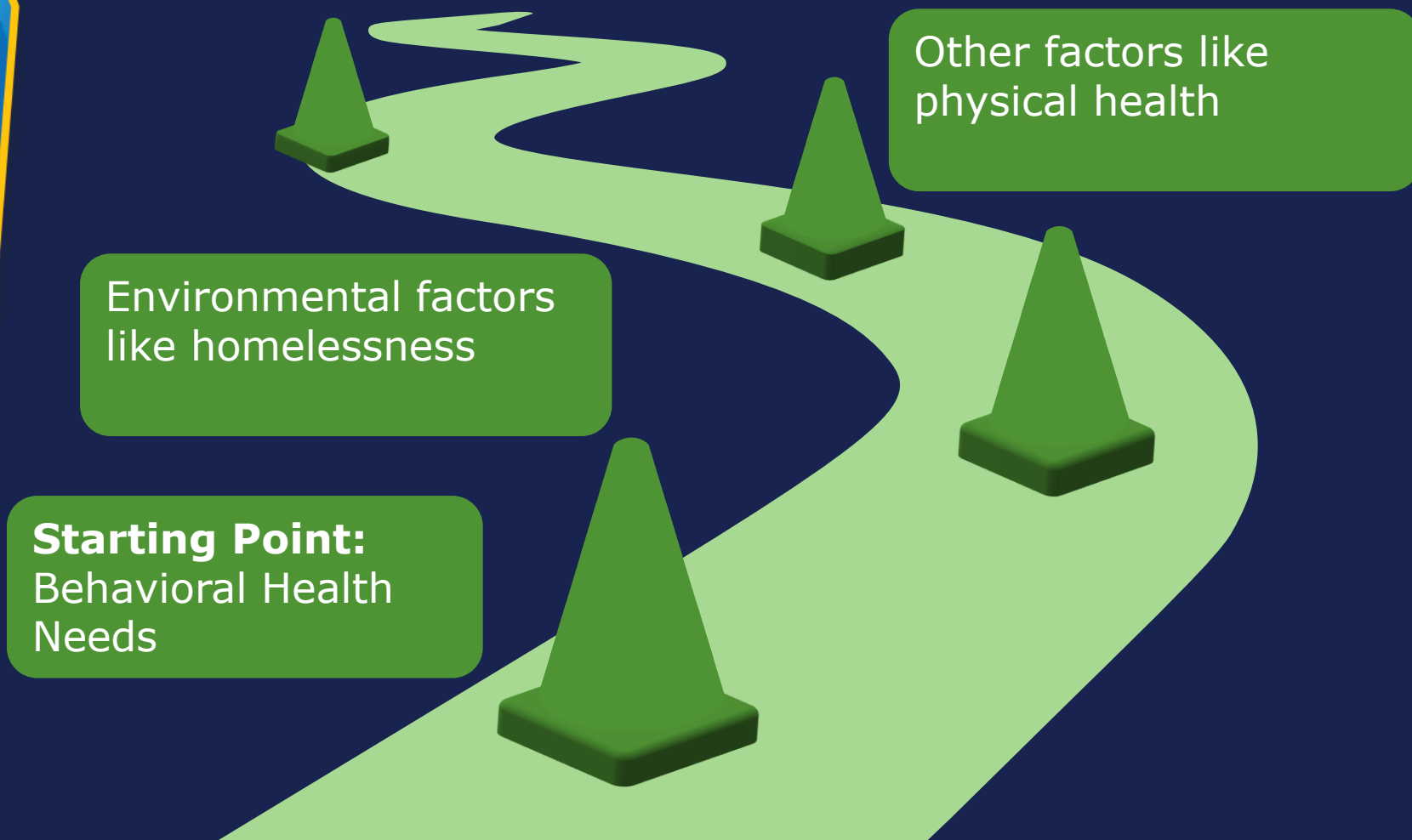
Health and Human  
Services





TEXAS  
Health and Human  
Services

# Understand the Intersection with Homelessness





TEXAS  
Health and Human  
Services

# Performance Contract

---

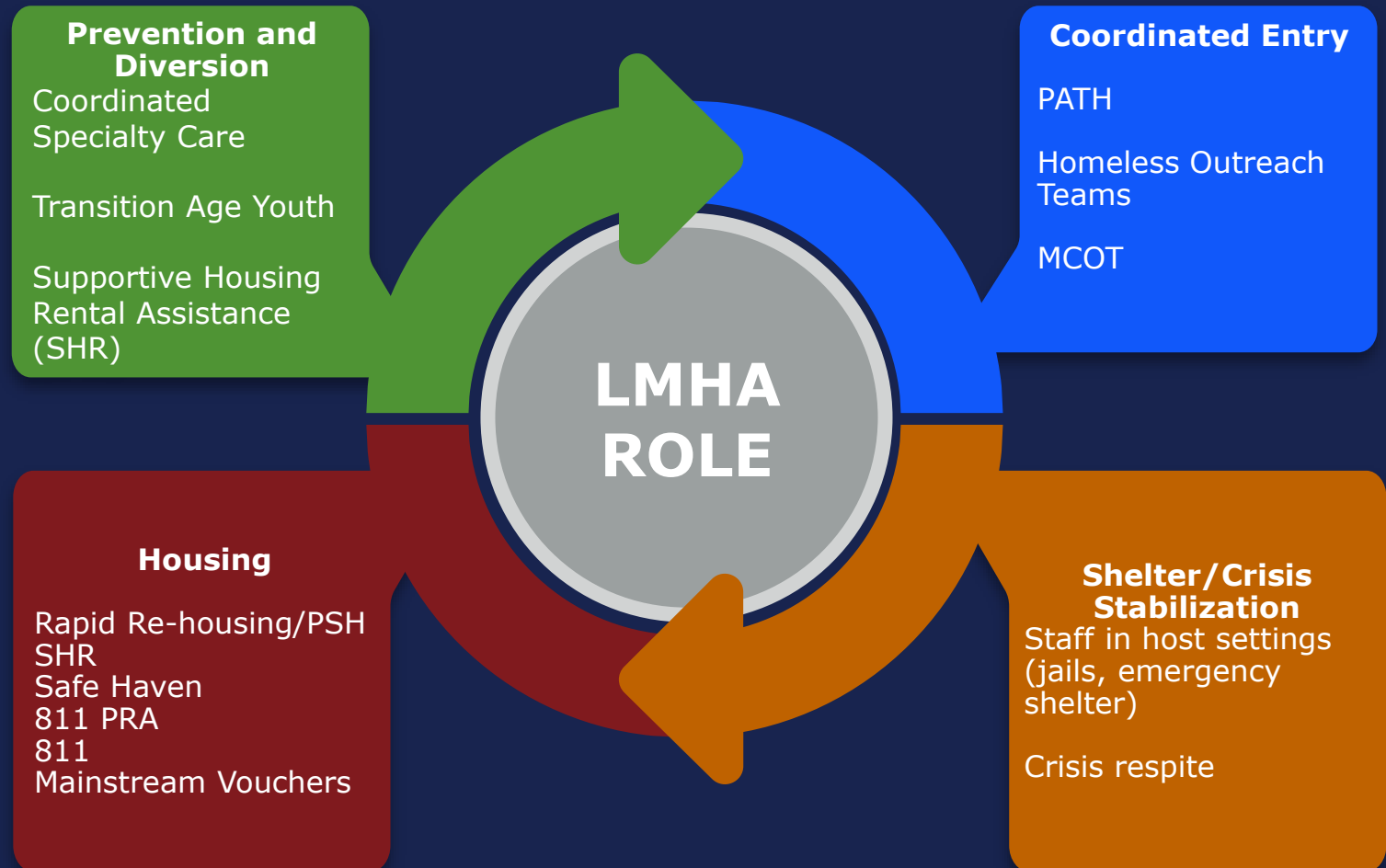
- Can be reviewed online at <https://hhs.texas.gov/doing-business-hhs/provider-portals/behavioral-health-services-providers/behavioral-health-provider-resources/community-mental-health-contracts>
- Supportive housing services are part of the standard service array in any of the levels of care except LOC 0: Crisis. This includes housing placement and retention.



# Homeless Crisis Response



TEXAS  
Health and Human  
Services

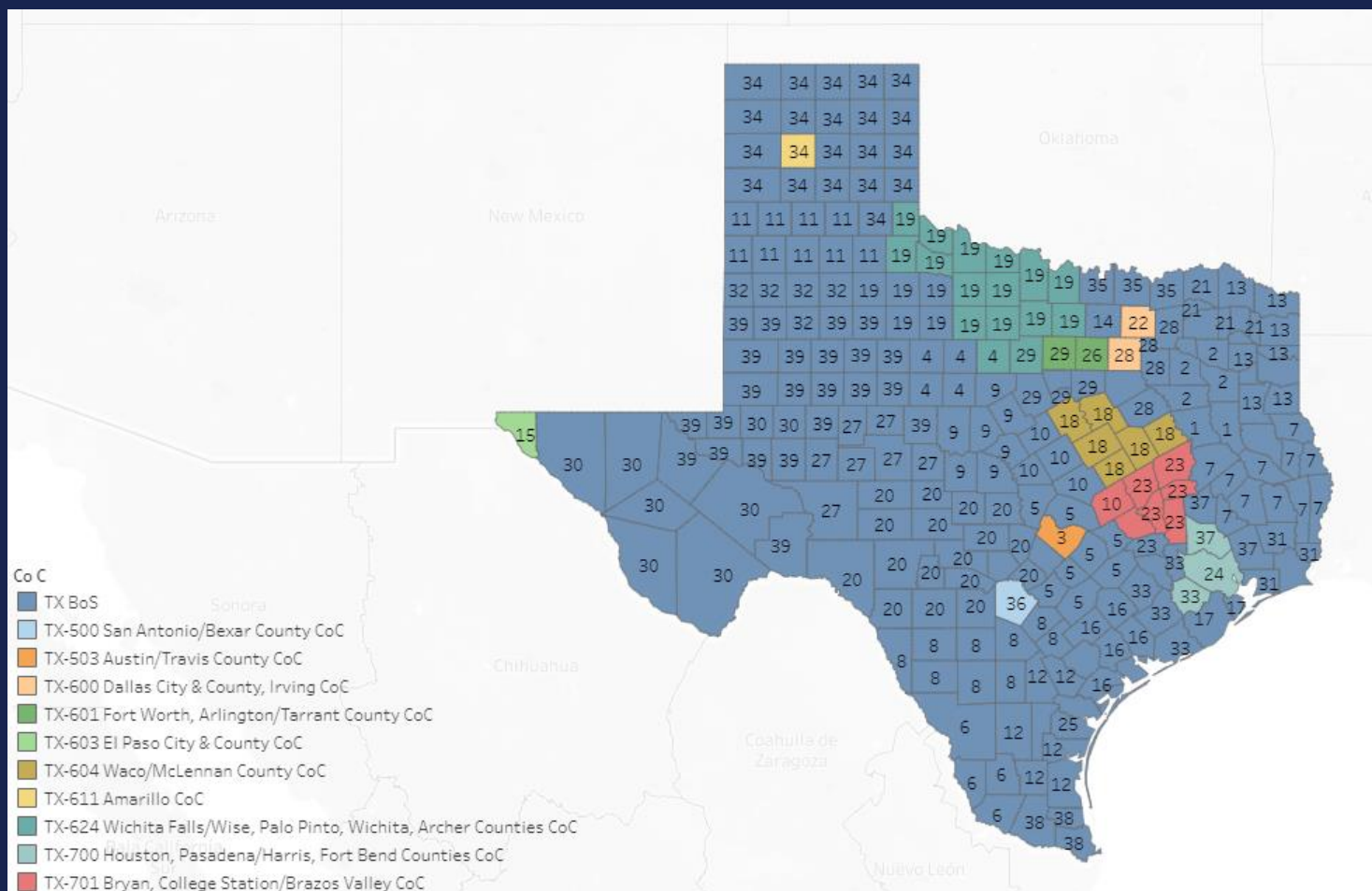


# Your Continuum of Care and the LMHA



TEXAS

Health and Human  
Services



[https://public.tableau.com/profile/kb.fiero#!/vizhome/TXBoSLMHASHRFundingOverlayV\\_3/Dashboard1](https://public.tableau.com/profile/kb.fiero#!/vizhome/TXBoSLMHASHRFundingOverlayV_3/Dashboard1)



**TEXAS**  
Health and Human  
Services

# Partnering with the LMHA

---

# Crafting a Partnership



TEXAS  
Health and Human  
Services

**Entry Points**



**Prioritization**

**Community Context**



TEXAS  
Health and Human  
Services

# Shared Agreements





TEXAS  
Health and Human  
Services

# Examples of Successful Partnerships

---

- LMHA and the public housing authority
- LMHA involvement in Coordinated Entry and the CoC
- LMHA involvement in developing new housing partnerships
- Important to leverage the LMHA in any community



TEXAS  
Health and Human  
Services

# Questions?

---



**TEXAS**  
Health and Human  
Services

# Thank you

---

**Helen Eisert, LCSW-S**

**[Helen.Eisert@hhsc.state.tx.us](mailto:Helen.Eisert@hhsc.state.tx.us)**