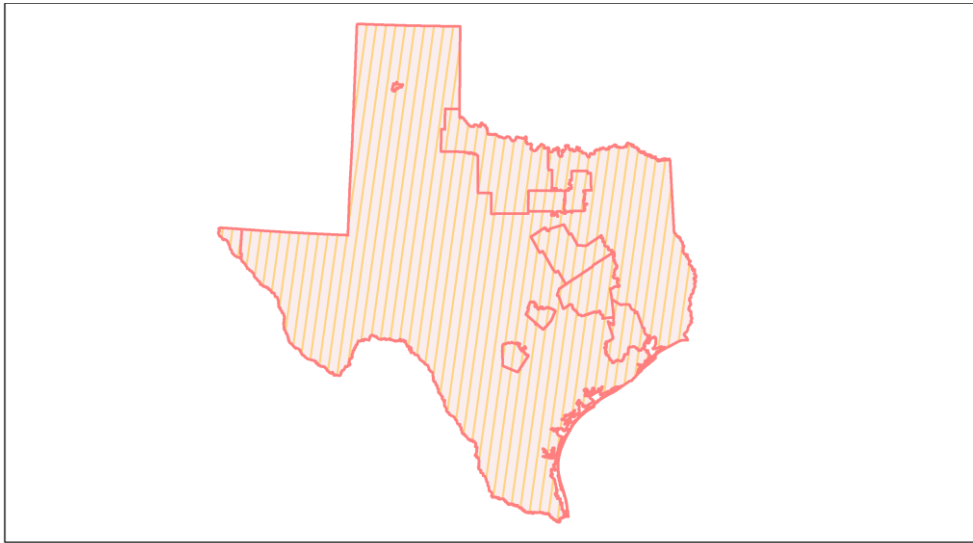
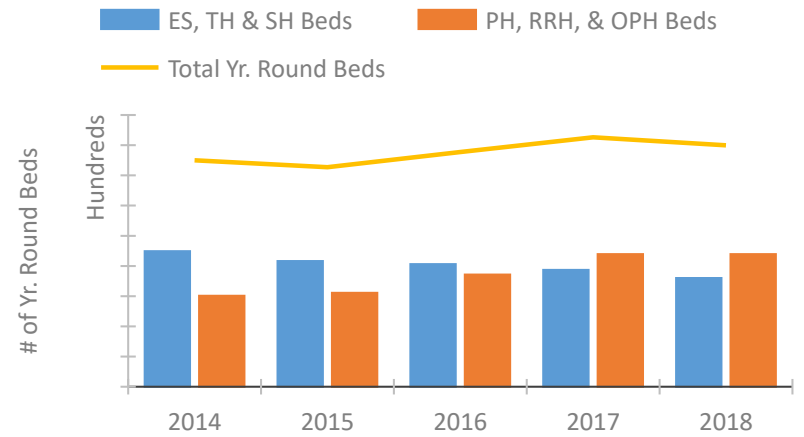


Texas Continuum of Care Performance Profile

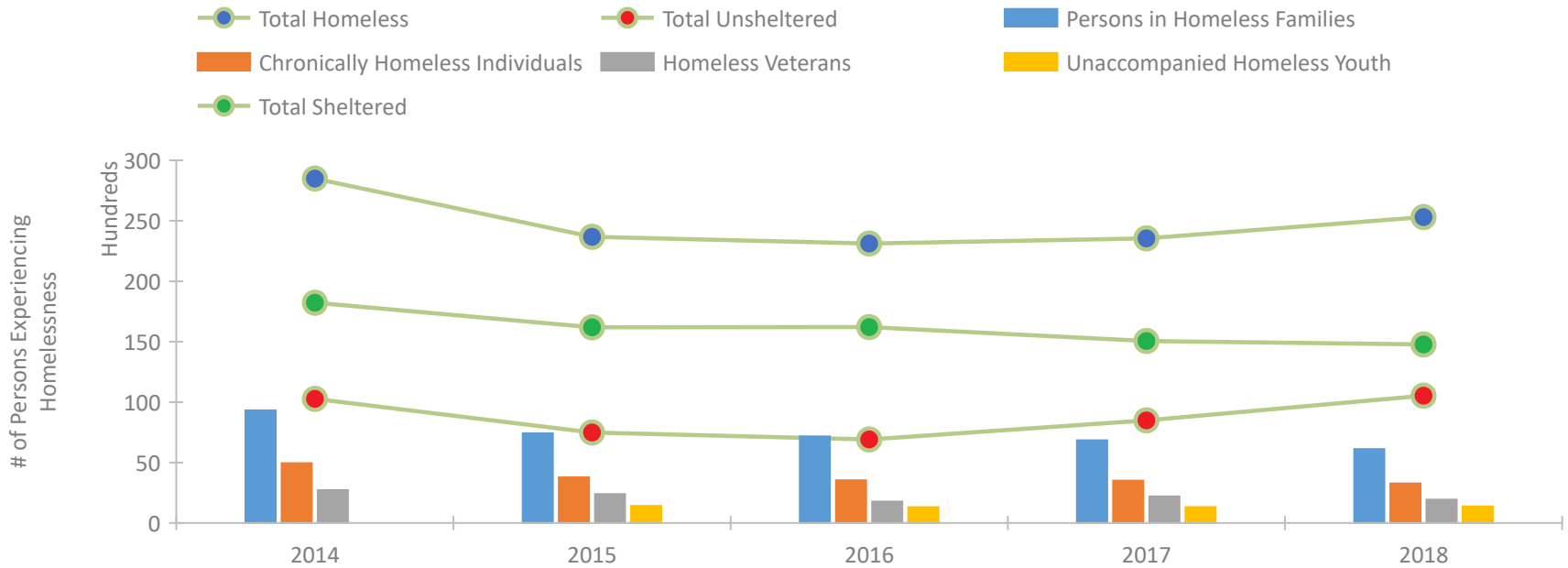


2018 CoC Boundaries 2017 CoC Boundaries

Housing Inventory Count by Program Type

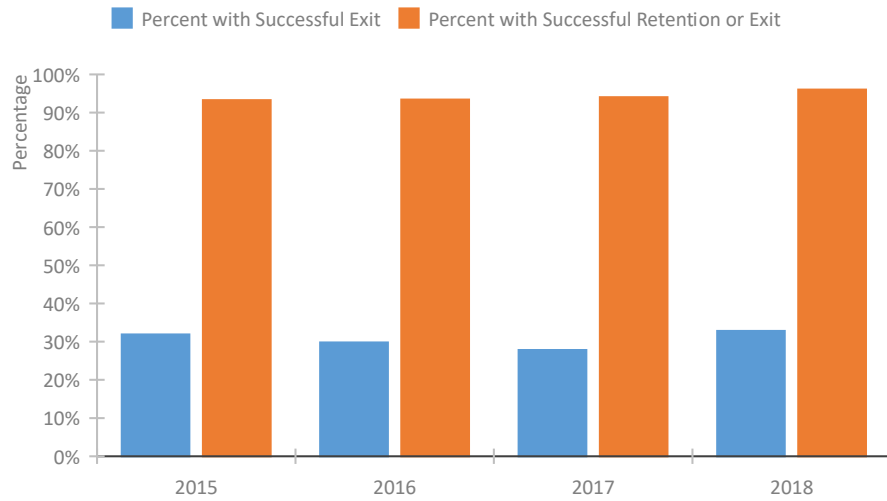


Homeless Population – Point-in-Time (PIT) Count

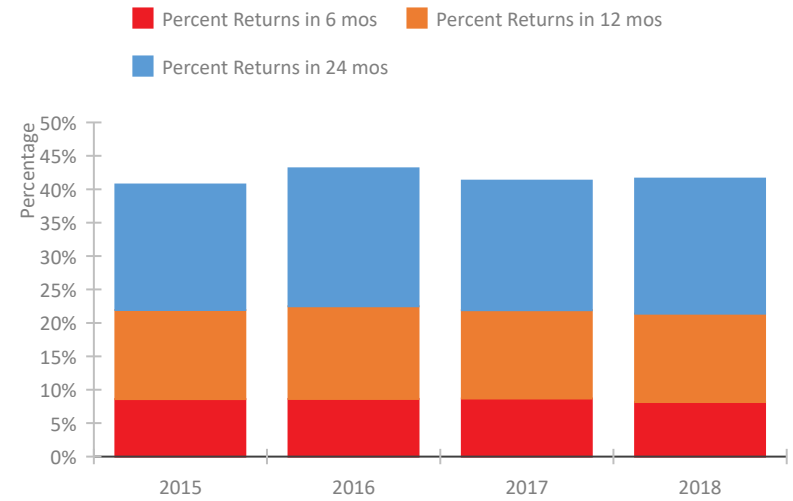


Texas Continuum of Care Performance Profile

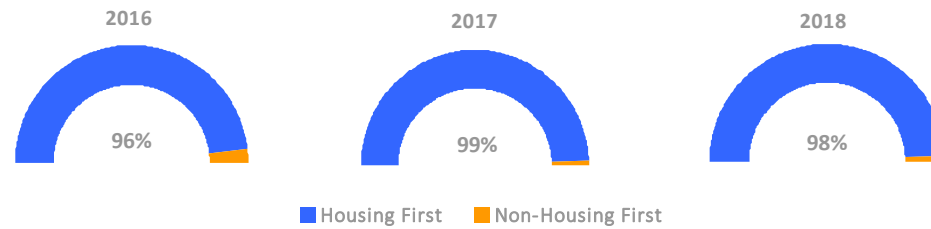
Exits to Permanent Housing by Program Type



Returns to Homelessness Over Time



Proportion of Housing First Projects by Year



Number of Projects by Year

	2016	2017	2018
Housing First Projects	195	197	205
Non-Housing First Projects	8	2	4

Data Summary: Texas

Point-In-Time Count Summary

	2014	2015	2016	2017	2018	2017-18 Change	% Change
Number of Sheltered Persons in Families	8,470	6,958	6,899	6,341	5,859	-482	-8%
Number of Unsheltered Persons in Families	848	455	264	499	252	-247	-49%
Number of Sheltered Individuals	9,758	9,234	9,315	8,714	8,917	203	2%
Number of Unsheltered Individuals	9,419	7,031	6,644	7,994	10,282	2,288	29%
Total Homeless Persons	28,495	23,678	23,122	23,548	25,310	1,762	7%
Number of Sheltered Families	2,549	2,159	2,216	1,986	1,845	-141	-7%
Number of Unsheltered Families	235	157	81	182	72	-110	-60%
Number of Total Families	2,784	2,316	2,297	2,168	1,917	-251	-12%
Sheltered Chronically Homeless Individuals	1,892	1,543	1,500	1,319	1,379	60	5%
Unsheltered Chronically Homeless Individuals	3,060	2,235	2,034	2,178	1,890	-288	-13%
Total Chronically Homeless Individuals	4,952	3,778	3,534	3,497	3,269	-228	-7%
Sheltered Veterans	1,576	1,490	1,285	1,379	1,142	-237	-17%
Unsheltered Veterans	1,142	903	483	821	793	-28	-3%
Total Veterans	2,718	2,393	1,768	2,200	1,935	-265	-12%
Sheltered Unaccompanied Youth (up to 24)	--	797	764	772	754	-18	-2%
Unsheltered Unaccompanied Youth (up to 24)	--	619	545	546	625	79	14%
Total Unaccompanied Youth (up to 24)	--	1,416	1,309	1,318	1,379	61	5%

System Performance Measures Summary

	2014	2015	2016	2017	2018	2017-18 Change	% Change
Returns to Homelessness in 6 Months	N/A	8.6%	8.6%	8.7%	8.2%	-0.5%	N/A
First Time Homeless	N/A	44,800	40,605	48,402	43,322	-5,080	-10.5%
Exits to Permanent Housing (ES, SH, TH, RHH)	N/A	31.9%	29.8%	27.8%	32.8%	5%	N/A
Retention of or Exits to Permanent Housing (PSH, OPH)	N/A	93.2%	93.4%	94.0%	96.0%	2%	N/A

Housing Inventory Count Summary

	2014	2015	2016	2017	2018	2017-18 Change	% Change
Emergency Shelter	12,942	13,382	13,328	13,475	13,487	12	0%
Safe Haven	153	128	106	84	109	25	30%
Transitional Housing	9,348	7,302	6,863	5,785	4,410	-1,375	-24%
Permanent Supportive Housing	12,209	13,058	12,725	14,376	14,432	56	0%
Rapid Re-Housing	1,371	2,014	3,367	4,775	5,143	368	8%
Other Permanent Housing	1,440	438	2,434	2,814	2,393	-421	-15%

Award Summary

	2014	2015	2016	2017	2018	2017-18 Change	% Change
CoC	\$77,942,382	\$87,469,903	\$86,315,343	\$88,801,836	\$97,243,257	\$8,441,421	10%
ESG	\$18,108,755	\$19,478,119	\$19,408,550	\$22,142,699	\$19,384,204	(\$2,758,495)	-12%
YHPD	N/A	N/A	\$5,227,483	--	\$9,107,696	--	--