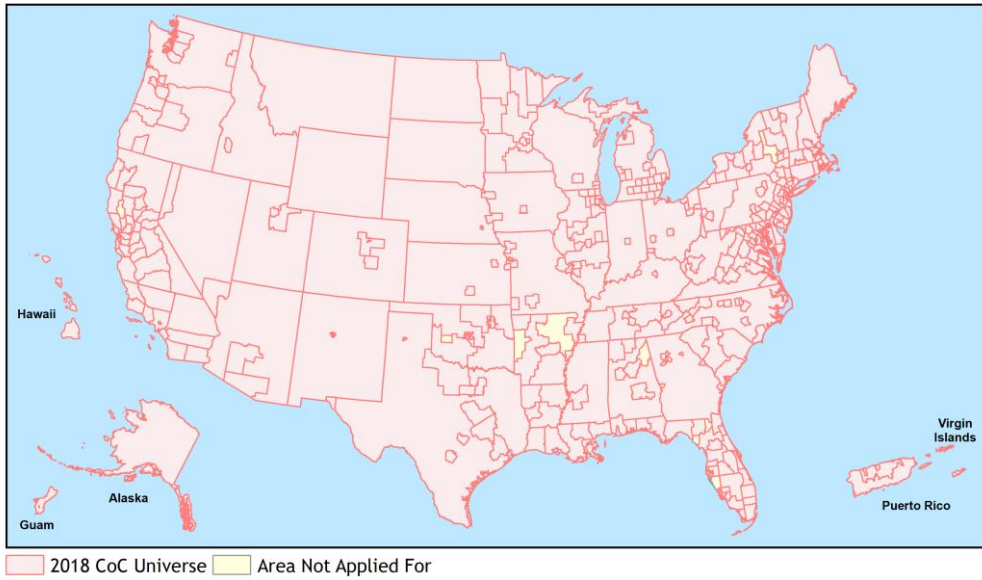
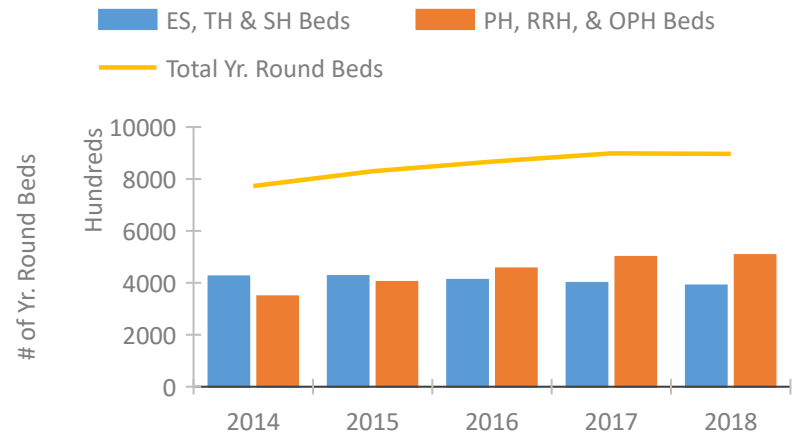


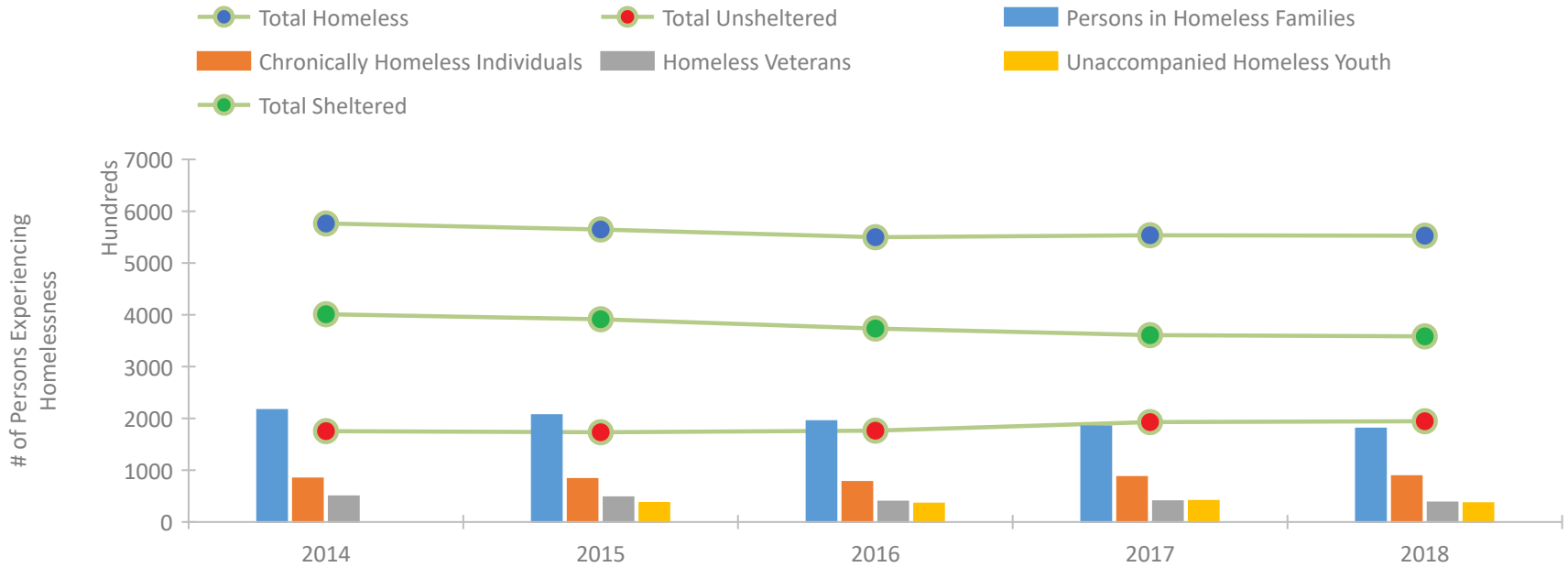
## Continuum of Care National Performance Profile



## Housing Inventory Count by Program Type

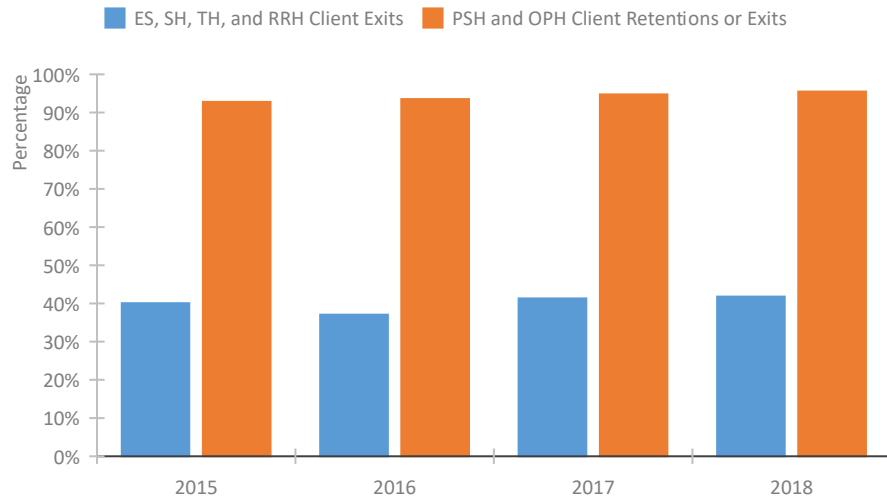


## Homeless Population – Point-in-Time (PIT) Count

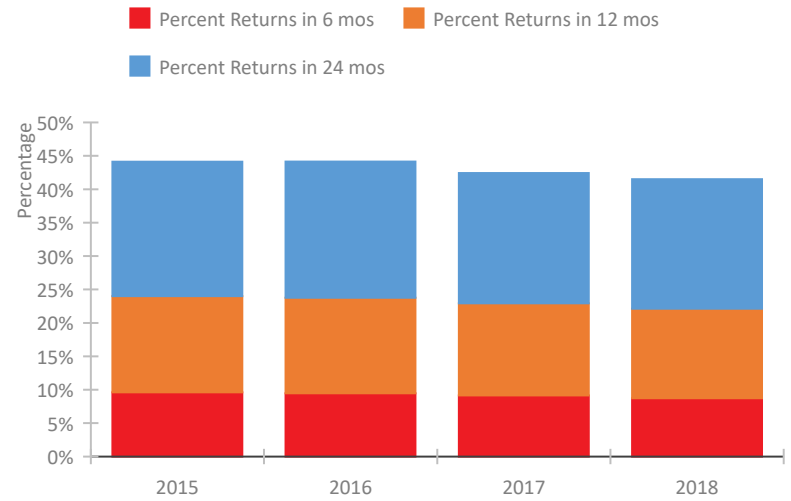


## Continuum of Care National Performance Profile

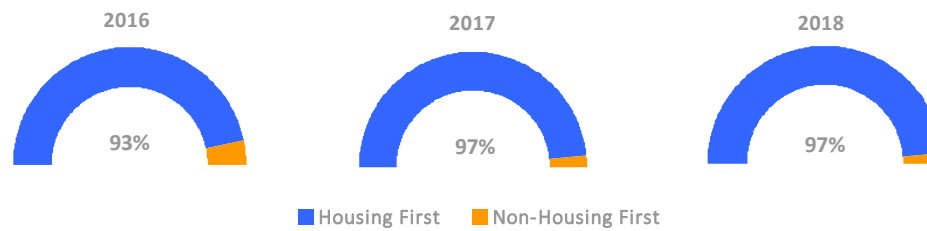
### Exits to Permanent Housing by Program Type



### Returns to Homelessness Over Time



### Proportion of Housing First Projects by Year



### Number of Projects by Year

	2016	2017	2018
Housing First Projects	6,570	8,039	7,038
Non-Housing First Projects	461	265	203

## National Data Summary

### Point-In-Time Count Summary

	2014	2015	2016	2017	2018	2017-18 Change	% Change
Number of Sheltered Persons in Families	191,903	185,824	175,563	167,723	164,023	-3,700	-2%
Number of Unsheltered Persons in Families	24,358	20,462	19,153	16,938	16,390	-548	-3%
Number of Sheltered Individuals	209,148	205,616	198,008	193,144	194,340	1,196	1%
Number of Unsheltered Individuals	151,041	152,806	157,204	175,937	178,077	2,140	1%
<b>Total Homeless Persons</b>	<b>576,450</b>	<b>564,708</b>	<b>549,928</b>	<b>553,742</b>	<b>552,830</b>	<b>-912</b>	<b>0%</b>
Number of Sheltered Families	59,629	58,064	55,265	52,829	51,513	-1,316	-2%
Number of Unsheltered Families	7,984	6,133	6,000	5,142	4,829	-313	-6%
<b>Number of Total Families</b>	<b>67,613</b>	<b>64,197</b>	<b>61,265</b>	<b>57,971</b>	<b>56,342</b>	<b>-1,629</b>	<b>-3%</b>
Sheltered Chronically Homeless Individuals	31,203	28,355	24,596	26,629	30,754	4,125	15%
Unsheltered Chronically Homeless Individuals	52,786	54,815	52,890	60,333	57,886	-2,447	-4%
<b>Total Chronically Homeless Individuals</b>	<b>83,989</b>	<b>83,170</b>	<b>77,486</b>	<b>86,962</b>	<b>88,640</b>	<b>1,678</b>	<b>2%</b>
Sheltered Veterans	32,119	31,505	26,404	24,690	23,312	-1,378	-6%
Unsheltered Veterans	17,570	16,220	13,067	15,366	14,566	-800	-5%
<b>Total Veterans</b>	<b>49,689</b>	<b>47,725</b>	<b>39,471</b>	<b>40,056</b>	<b>37,878</b>	<b>-2,178</b>	<b>-5%</b>
Sheltered Unaccompanied Youth (up to 24)	--	19,838	19,188	18,542	18,011	-531	-3%
Unsheltered Unaccompanied Youth (up to 24)	--	17,069	16,498	22,257	18,350	-3,907	-18%
<b>Total Unaccompanied Youth (up to 24)</b>	<b>--</b>	<b>36,907</b>	<b>35,686</b>	<b>40,799</b>	<b>36,361</b>	<b>-4,438</b>	<b>-11%</b>

### System Performance Measures Summary

	2014	2015	2016	2017	2018	2017-18 Change	% Change
Returns to Homelessness in 6 Months	N/A	9.6%	9.5%	9.1%	8.7%	-0.4%	N/A
First Time Homeless	N/A	836,186	852,330	834,357	818,893	-15,464	-1.9%
Exits to Permanent Housing (ES, SH, TH, RHH)	N/A	40.1%	37.1%	41.3%	41.8%	0.5%	N/A
Retention of or Exits to Permanent Housing (PSH, OPH)	N/A	92.8%	93.5%	94.8%	95.5%	0.8%	N/A

### Housing Inventory Count Summary

	2014	2015	2016	2017	2018	2017-18 Change	% Change
Emergency Shelter	249,497	264,440	264,629	277,537	286,203	8,666	3%
Safe Haven	2,159	2,043	1,907	1,653	2,390	737	45%
Transitional Housing	173,224	159,784	144,749	120,249	101,029	-19,220	-16%
Permanent Supportive Housing	300,282	319,212	340,906	353,800	361,386	7,586	2%
Rapid Re-Housing	36,176	58,615	75,686	93,718	109,095	15,377	16%
Other Permanent Housing	9,843	24,329	37,770	52,102	36,790	-15,312	-29%

### Award Summary

	2014	2015	2016	2017	2018	2017-18 Change	% Change
<b>CoC</b>	\$1,810,559,994	\$1,943,317,257	\$1,953,210,272	\$2,033,244,110	\$2,165,930,757	\$132,686,647	7%
<b>ESG</b>	\$246,019,466	\$267,455,298	\$268,199,342	\$309,026,711	\$270,000,000	(\$39,026,711)	-13%
<b>YHPD</b>	N/A	N/A	\$33,000,001	\$43,000,000	\$75,000,000	\$32,000,000	74%