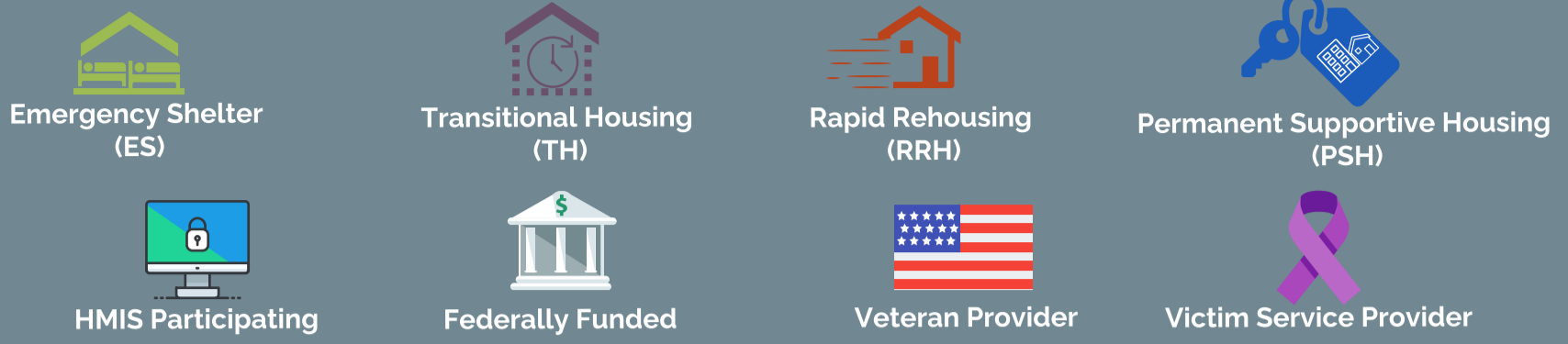


Texas Balance of State Housing Inventory Count

The Housing Inventory Count (HIC) is a tally of the number of beds and units available on a given night, broken down by project type. It includes beds dedicated to serve persons who are experiencing homelessness as well as those in Permanent Housing. It additionally includes funding information as well as beds dedicated to specific sub-populations.

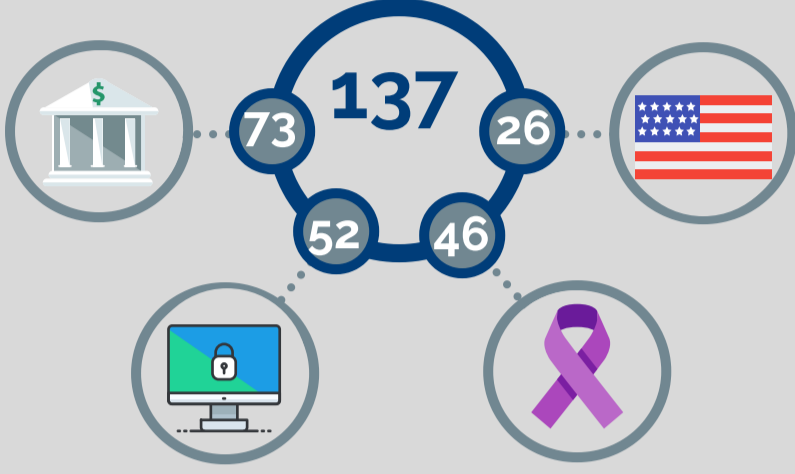
Project Types: Emergency Shelter, Transitional Housing, Rapid Re-housing, Permanent Supportive Housing, and Other Permanent Housing

Legend



2020 Housing Inventory Count

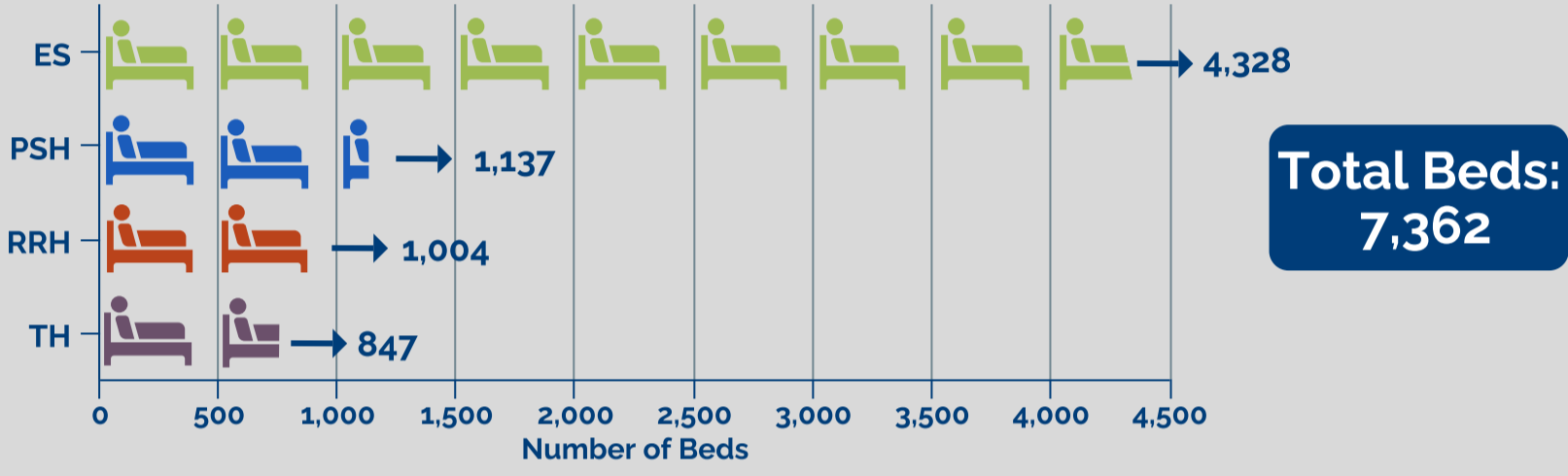
Organizations



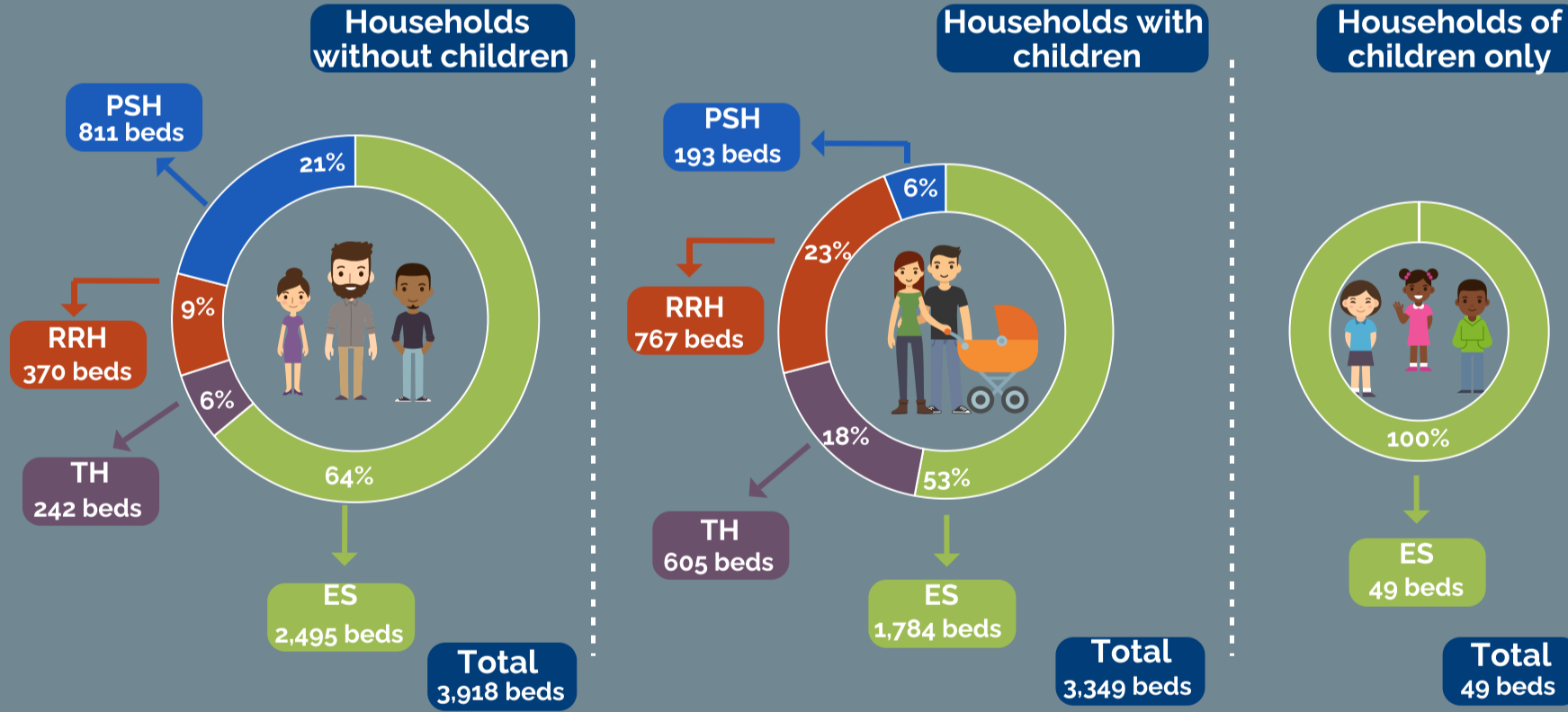
Projects



Bed Count



2020 Household Breakdown



Key Takeaways

76% Overall Utilization Rate

67% HMIS Project Coverage

1,041 Veteran Beds

325 Chronically Homeless Beds

82 Youth Beds

Bed Count Analysis

