



EXAMINING INTERSECTIONS

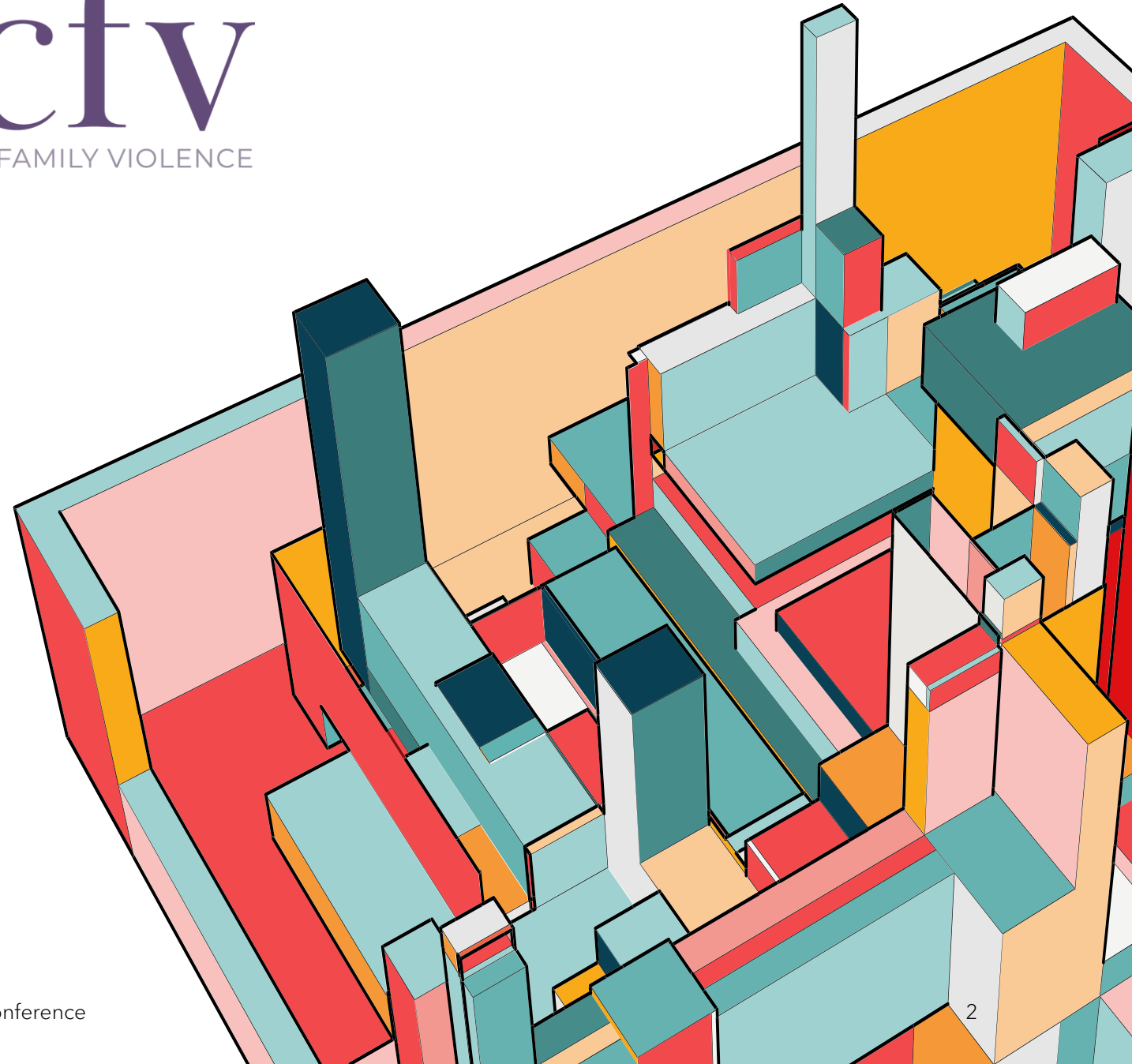
Intimate Partner Violence, Housing &
Homelessness

Molly Woodard Thibodeaux
Texas Council on Family Violence

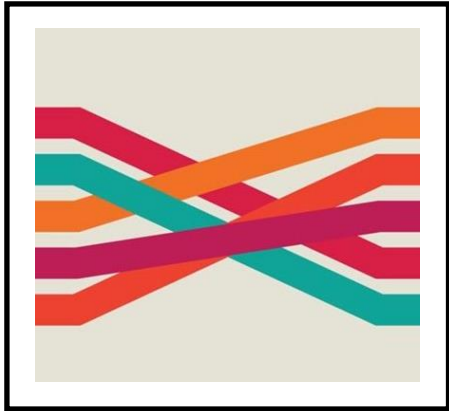


ABOUT US

The Texas Council on Family Violence (TCFV) is the only 501(c)(3) nonprofit coalition in Texas dedicated solely to creating safer communities and freedom from family violence. With a statewide reach and direct local impact, TCFV shapes public policy, equips service providers with essential tools, and initiates strategic prevention efforts. Since 1978, we have been a nationally recognized leader in our efforts to end family violence.



OVERVIEW



INTERSECTIONALITIES

IPV, Racism +
Homelessness



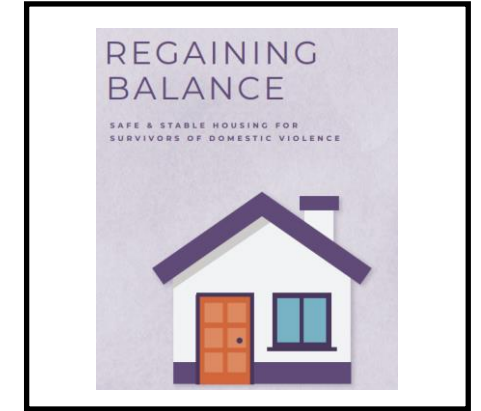
HOUSING OPTONS

Survivors of IPV



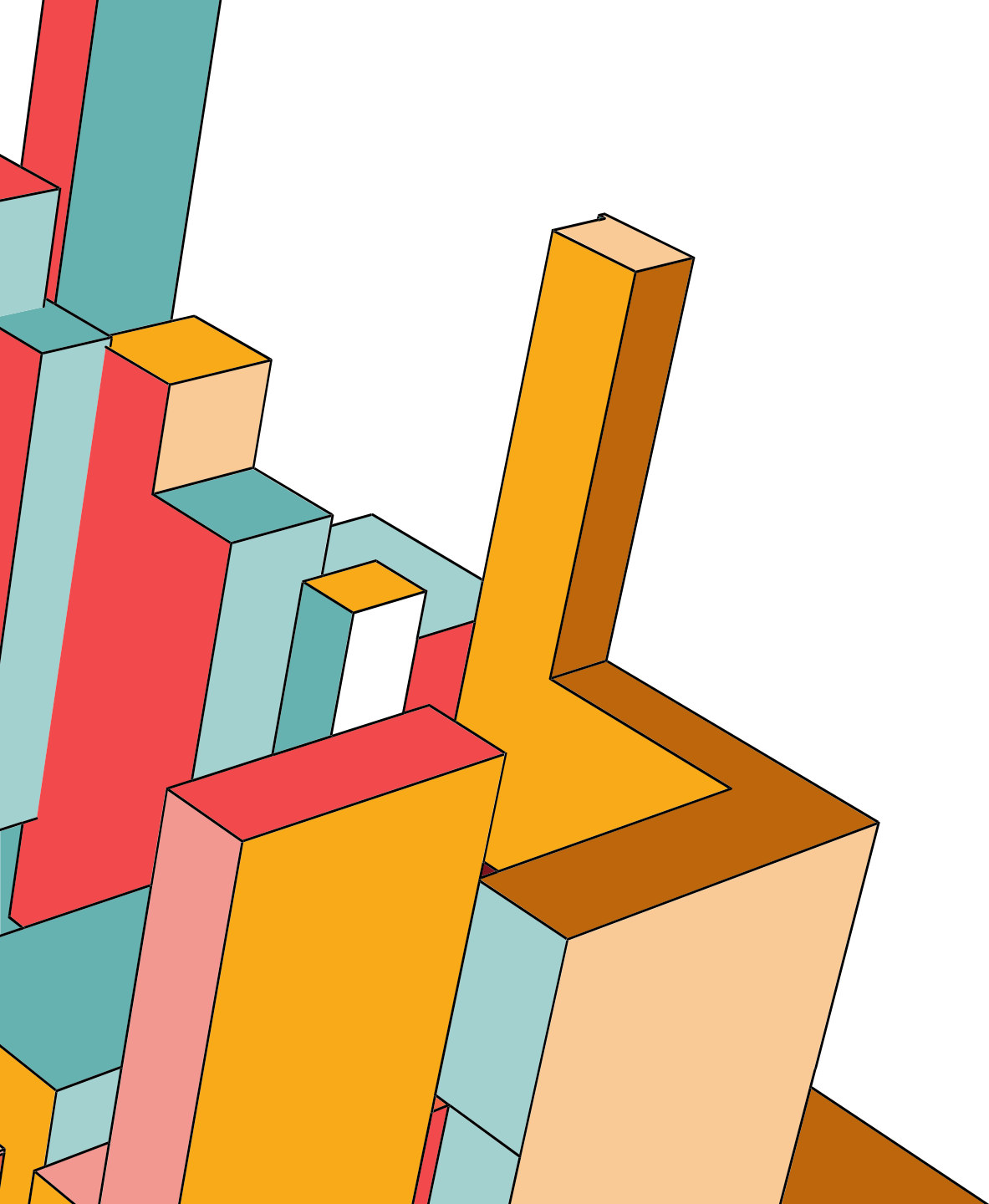
PROTECTIONS

Federal + State
Legislation



REGAINING BALANCE

Safe + Stable
Housing for
Survivors - REPORT



NATIONAL + STATEWIDE DATA

NATIONAL NETWORK TO END DOMESTIC VIOLENCE (NNEDV) – DV COUNTS SURVEY

20,701

Hotline Calls
Received

70,032

Survivors receive
residential and
non-residential
services

9,444

Unmet requests for
services

NATIONAL STATISTICS

80% +

U.S mothers w/
children
experiencing
homelessness have
previously
experienced DV

51%

Support/Advocacy
Related to
Housing/Landlord

64%

Unmet requests
were for housing
and emergency
shelter

SURVIVORS ACCESSING SERVICES IN TEXAS

1,700 +

People a day call
Domestic Violence
(DV) hotlines in
Texas for help

6,437

Survivors receive
residential and
non-residential
services from
Texas DV
organizations

1,122

Unmet requests for
services

TEXAS SURVIVOR INTERVIEWS

71.4%

Needed help
finding housing

69%

Getting into PH is a
big problem

32.7%

Needed help
keeping their
current housing

1 in 3-4

Homeless women
report DV as a major
contributor to
housing problems

90.1%

Experienced
homelessness at
least once after
escaping DV

45%

Experienced
homelessness
twice or more due
to DV



INTERSECTIONALITIES:

INTIMATE PARTNER VIOLENCE (IPV), HOUSING & HOMELESSNESS

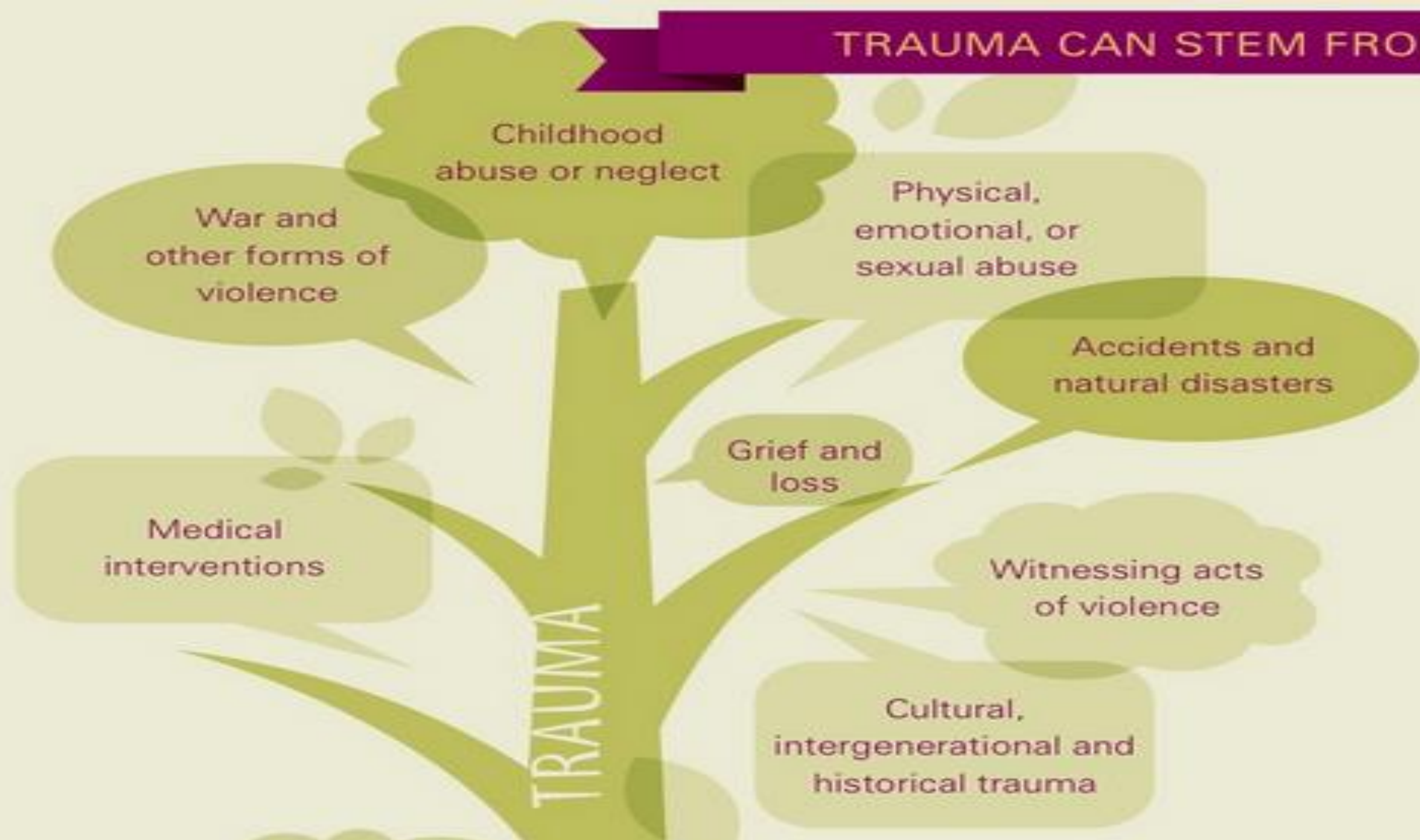


"Exposure to ongoing abuse can exacerbate symptoms and precipitate mental health crises, making it more difficult to access resources and increasing abusers' control over their lives."

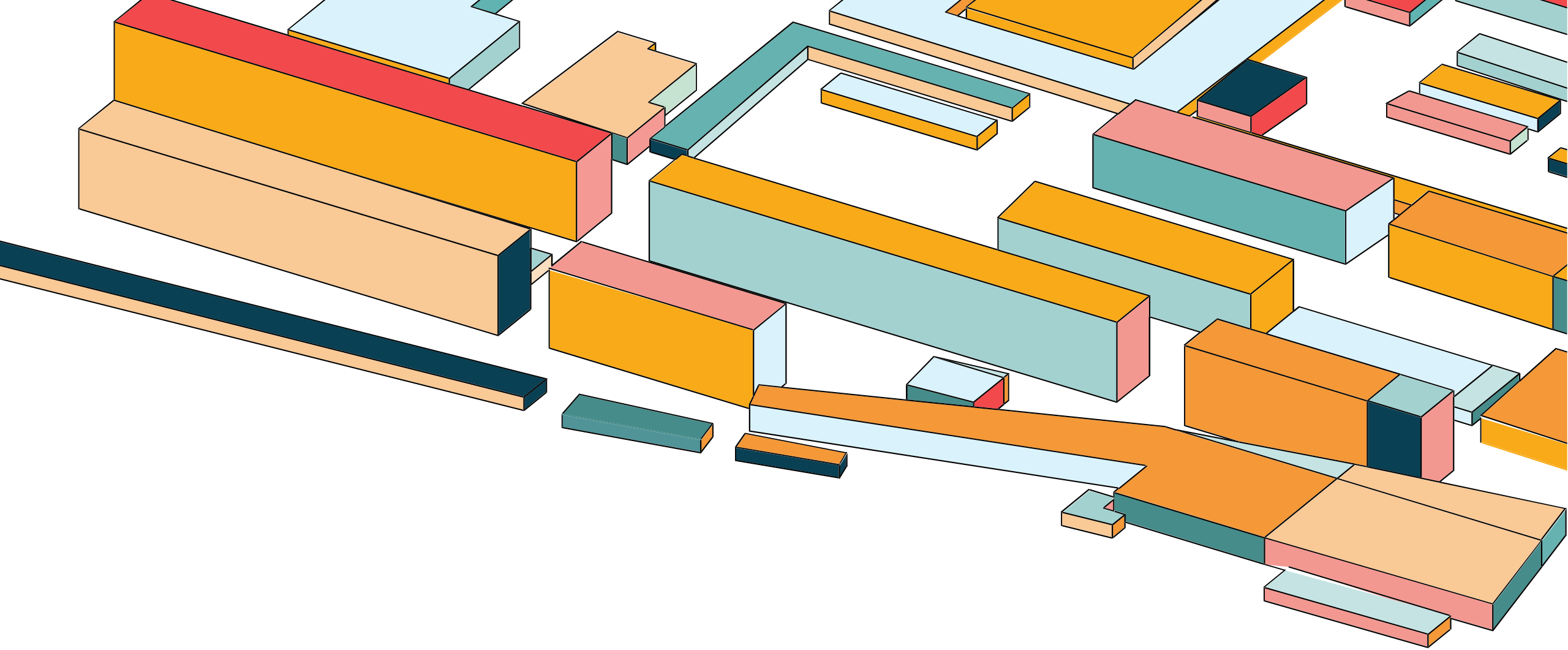
THE LINK: DOMESTIC & SEXUAL VIOLENCE AND TRAUMA

80% of women who experienced rape, stalking, or physical violence by an intimate partner reported significant short or long-term effects including PTSD

TRAUMA CAN STEM FROM





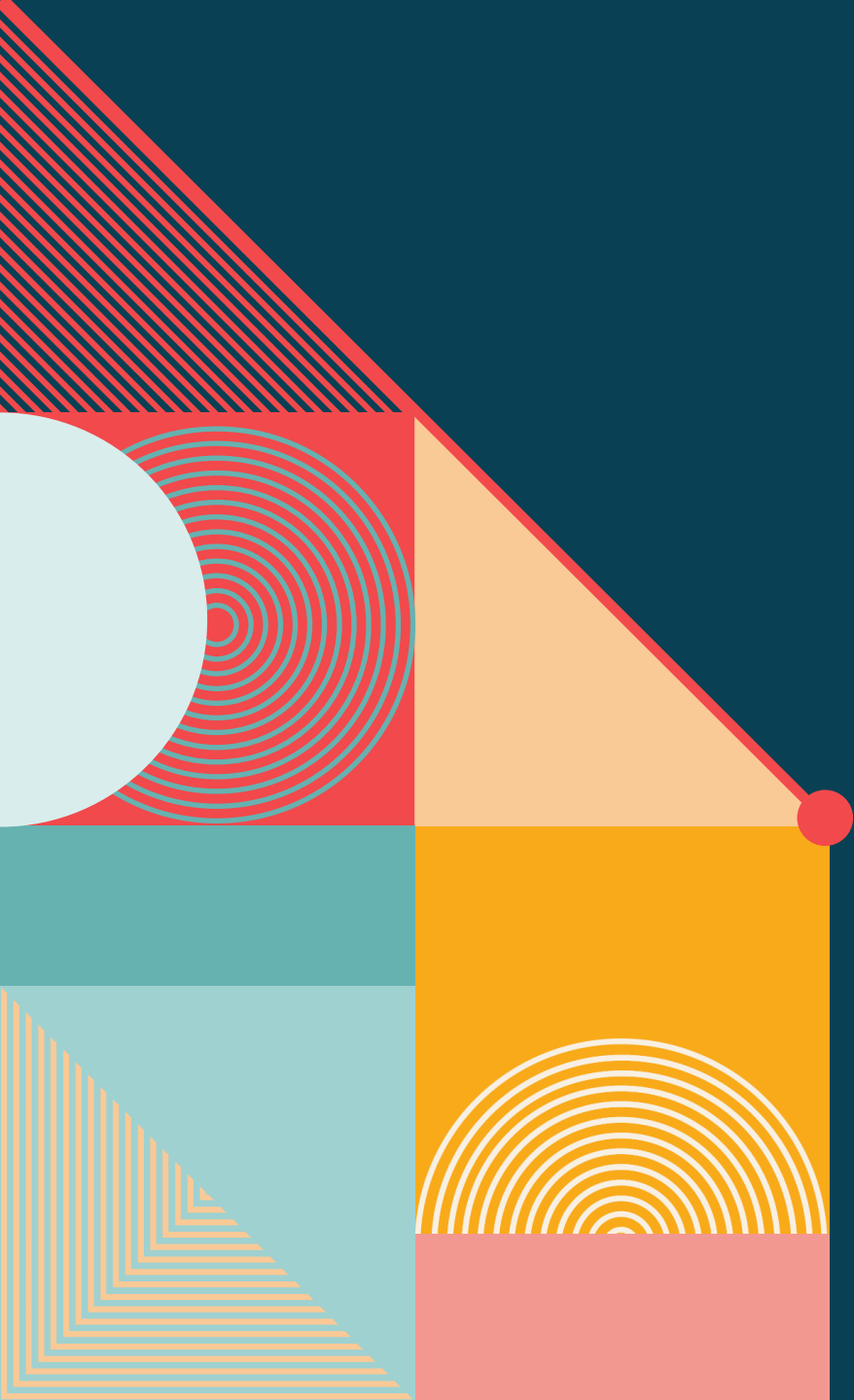


ADDITIONAL BARRIERS



REGAINING BALANCE

Safe & Stable Housing for
Survivors of DV



REGAINING BALANCE

SAFE & STABLE HOUSING FOR
SURVIVORS OF DOMESTIC VIOLENCE



Author: Jen Margulies
Report Contributors:
Molly Woodard Thibodeaux & Molly Voyles





AT A GLANCE

SAFE PLACES, SAFE FUTURES

The Need for Housing Beyond Shelter, Housing Options, Benefits of TH & Other Long-Term Supportive Housing Options

TX HOUSING OPTIONS FOR SURVIVORS

TH Landscape, Benefits, Trends & Needs

WHAT WORKS

Essential Elements, Research + Practice Spotlights

AFTER TRANSITIONAL HOUSING

Permanent Housing + Ongoing Supportive Services

WHAT'S NEXT

Policy Spotlight + Pathways, Factors for Funders, Community Engagement, The Future

TOOLKITS + RESOURCES

DVHF, TH, Mobile Advocacy, Flexible Funding/Direct Cash Assistance, Equitable Admissions



SAFE PLACES, SAFE FUTURES

THE NEED FOR HOUSING BEYOND SHELTER

- Housing is the Biggest Unmet Need
- Service Most Frequently Requested
- Survivors More Likely to Experience Housing Instability
- Financial Abuse Takes a Toll on Survivors' Ability to Secure Housing
- 47% of TH & 55% RRH Programs – Turn Down/Wait-List 6 or More Survivors Every Month

DV HOUSING OPTIONS

- TH
- RRH
- DVHF
- Permanent Housing
- Homelessness Prevention

BENEFITS OF TH & OTHER LONG-TERM HOUSING OPTIONS

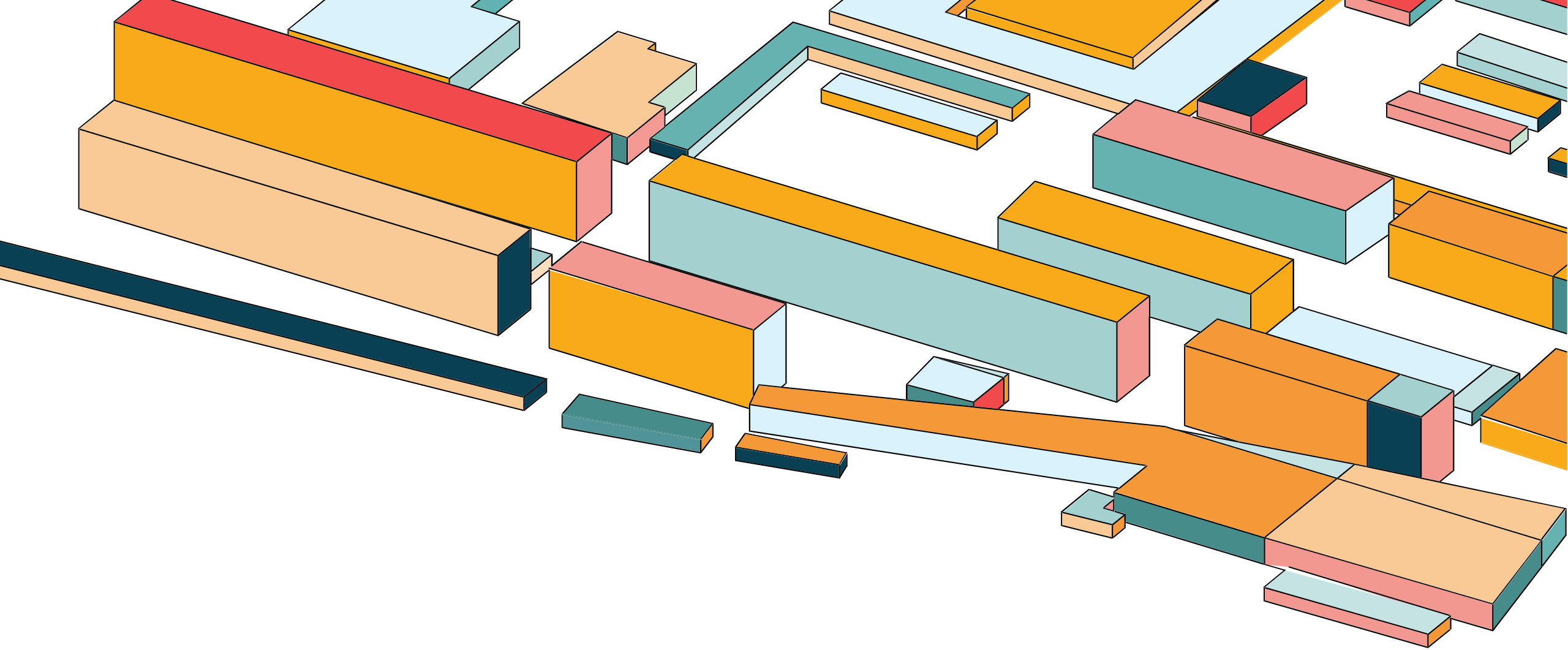
- Positive Long-Term Outcomes
- Survivor Safety, Healing, Housing Stability, + General Financial Well-Being
- Less DV Reported + Improved Economic Stability



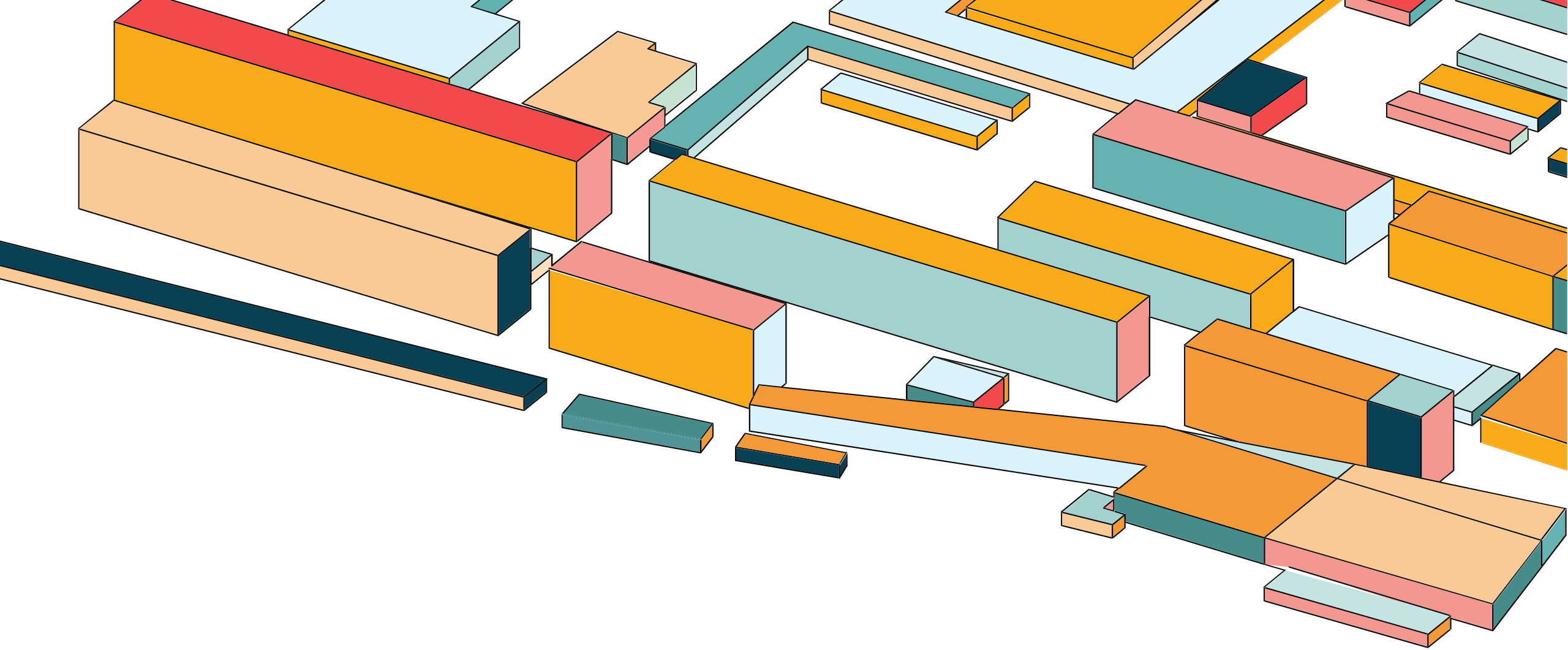
A NOTE ON SAFETY & CONFIDENTIALITY

Considerations for Survivors





HOUSING OPTIONS FOR SURVIVORS



EMERGENCY SHELTER

DOMESTIC VIOLENCE HOUSING SERVICE OPTIONS



TRANSITIONAL
HOUSING

RAPID
REHOUSING

DOMESTIC
VIOLENCE
HOUSING
FIRST

PERMANENT
HOUSING

HOMELESSNESS
PREVENTION

TX HOUSING OPTIONS

Longer-Term Supportive Housing

- 52 of 254 counties
- 27 DVTH
- 25.8% of DV agencies offer form of RRH

Benefits for Survivors

- Ongoing Safety Concerns
- Facing Barriers
- Lack Social Supports
- Low-Income
- Unemployed
- Financial Instability

Trends & Needs

- Scarce Affordable Housing
 - Gentrification / Displacement
 - Environmental Disasters
- Economic Impacts of the Pandemic

HOUSING GAPS

- 47% of family violence agencies with project-based or scattered site transitional housing have 6 or more survivors who are wait listed or turned down for housing every month due to lack of available units
- 55% of family violence agencies with rapid re-housing programs wait-listed or turn down 6 or more survivors every month due to lack of capacity
- The most unmet service need for survivors was more help looking for housing (26.7%)



WHAT WORKS

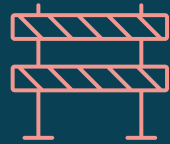
DEFINING SUCCESS

“Success is measured by our efforts to reduce isolation and to improve options for safety.”

ESSENTIAL ELEMENTS



SURVIVOR-DRIVEN,
SURVIVOR-CENTERED



LOW-BARRIER,
EQUITABLE
ADMISSIONS



BLEND OF
INDEPENDENCE +
SUPPORT



ACCESS TO STAFF
SUPPORT



SURVIVOR PEER
SUPPORT



FLEXIBLE FUNDING



MOBILE ADVOCACY



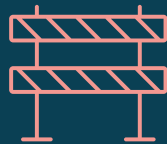
HOUSING
ADVOCACY

ESSENTIAL ELEMENTS



SURVIVOR-DRIVEN, SURVIVOR-CENTERED

- Empowerment Based
- Voluntary Services Model
- Trauma-Informed Approach



LOW-BARRIER, EQUITABLE ADMISSIONS

- As Few Barriers as Possible
- Policies That Implement Equity in Access
- Consider Unique Needs of Historically Marginalized Survivors



BLEND OF INDEPENDENCE + SUPPORT

- Minimal Restriction
- Maximum Flexibility
- Survivor-Defined Safety Assessments + Procedures
- Duration of Services – Long Enough



ACCESS TO STAFF SUPPORT

- Available Staff
- Build Connected Relationships

ESSENTIAL ELEMENTS



SURVIVOR PEER SUPPORT

- Opportunities for Survivors to Connect + Support
- Meaningful Participation



FLEXIBLE FUNDING

- Financial / Cash Assistance
- Cover Costs Getting in the Way of Securing or Keeping Housing
- Quick Access
- Limited Red Tape



MOBILE ADVOCACY

- Meet Survivors Where They Are – Literally
- Home Visits
- Mobile / Online Advocacy
- Survivor-Determined Location



HOUSING ADVOCACY

- Designated Housing Advocates
- Customized Assistance Navigating the Process
- Liaisons with Landlords + Community Partners



AFTER TRANSITIONAL HOUSING

PERMANENT HOUSING

- Take Over the Lease
- Move to Another Apartment
- Apply Through PHA
- Seek Out Low-Income Housing
- Supportive Family
- Vouchers

ONGOING SUPPORTIVE SERVICES POST-RESIDENCY

- On Your Own is Not Alone
- Ongoing Contact
- Trauma Recovery is Not Linear / Time-Limited

WHAT'S NEXT

Policy Spotlight

Policy Pathways

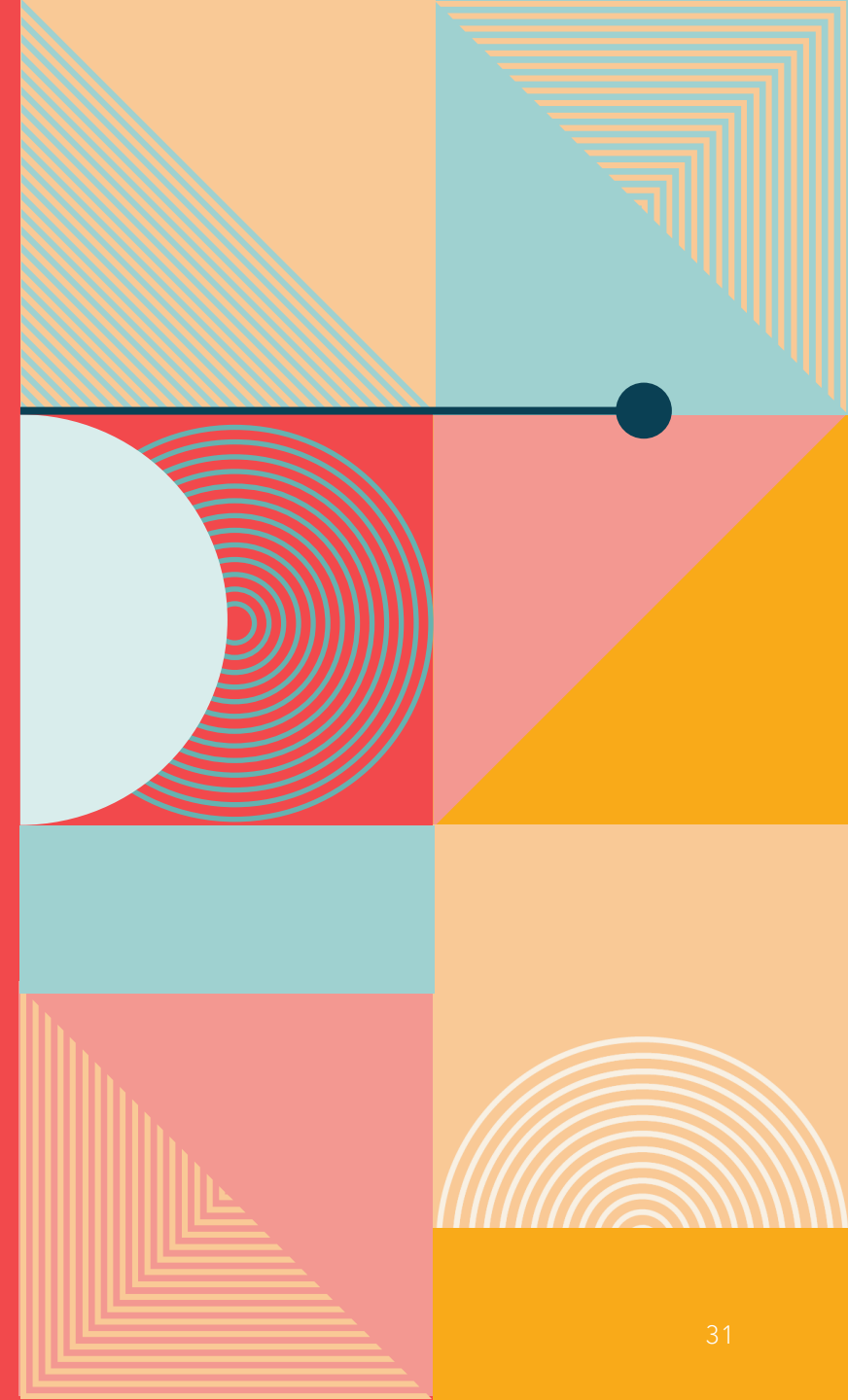
Factors for Funders

- Need for more supportive housing services
- Conclusion - Expanding the #/geographic diversity of TH units statewide
- Reduce Barriers to Entry for Existing Programs
- General Investments at State Level in Affordable Housing, MH services, Public Transportation, Childcare + Disaster Preparedness
- Affordable Housing: Inaccessible, long wait-lists, lack of affordable housing, housing shortages
- Increase housing funding + make permanent, adjust expected outcomes, decrease match requirements, unrestricted flexible funding, allow time for start-up/programmatic changes, fund a diversity of housing options, fund additional resources/strategies

WHAT'S NEXT

Community Engagement + Systems Change

- Affordable Housing
- Minimum Wage
- Ban the Box
- Transportation

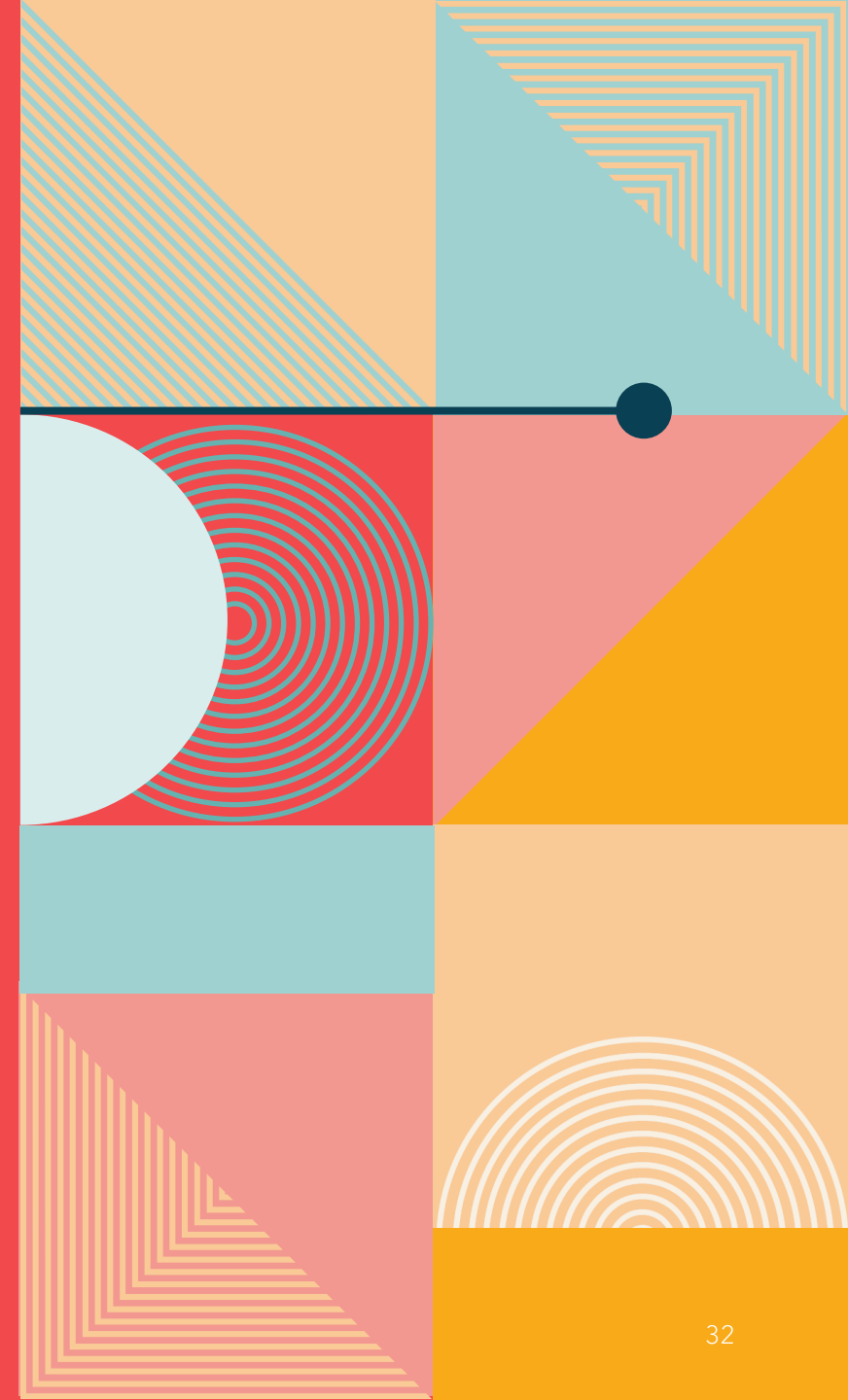


SMALL GROUP DISCUSSION: Community Engagement + Systems Change

- Affordable Housing
- Minimum Wage
- Ban the Box
- Transportation

"I'm standing with five of my coworkers on the steps of City Hall at a... rally in support of affordable housing bonds... And I think about Bonnie... After a lifetime of trauma, a lot of doors opened for Bonnie during her time at [our agency], but the most important was the door to her own safe, affordable and permanent apartment. Bonnie found permanent housing at a unit funded by a previous Affordable Housing bond. To Bonnie, a permanent home was a miracle. Safe and affordable housing isn't only a path to escape abuse, it helps to reduce the risk of future victimization."

- Texas TH Advocate





SMALL GROUP

Community Engagement + Systems Change

#1:

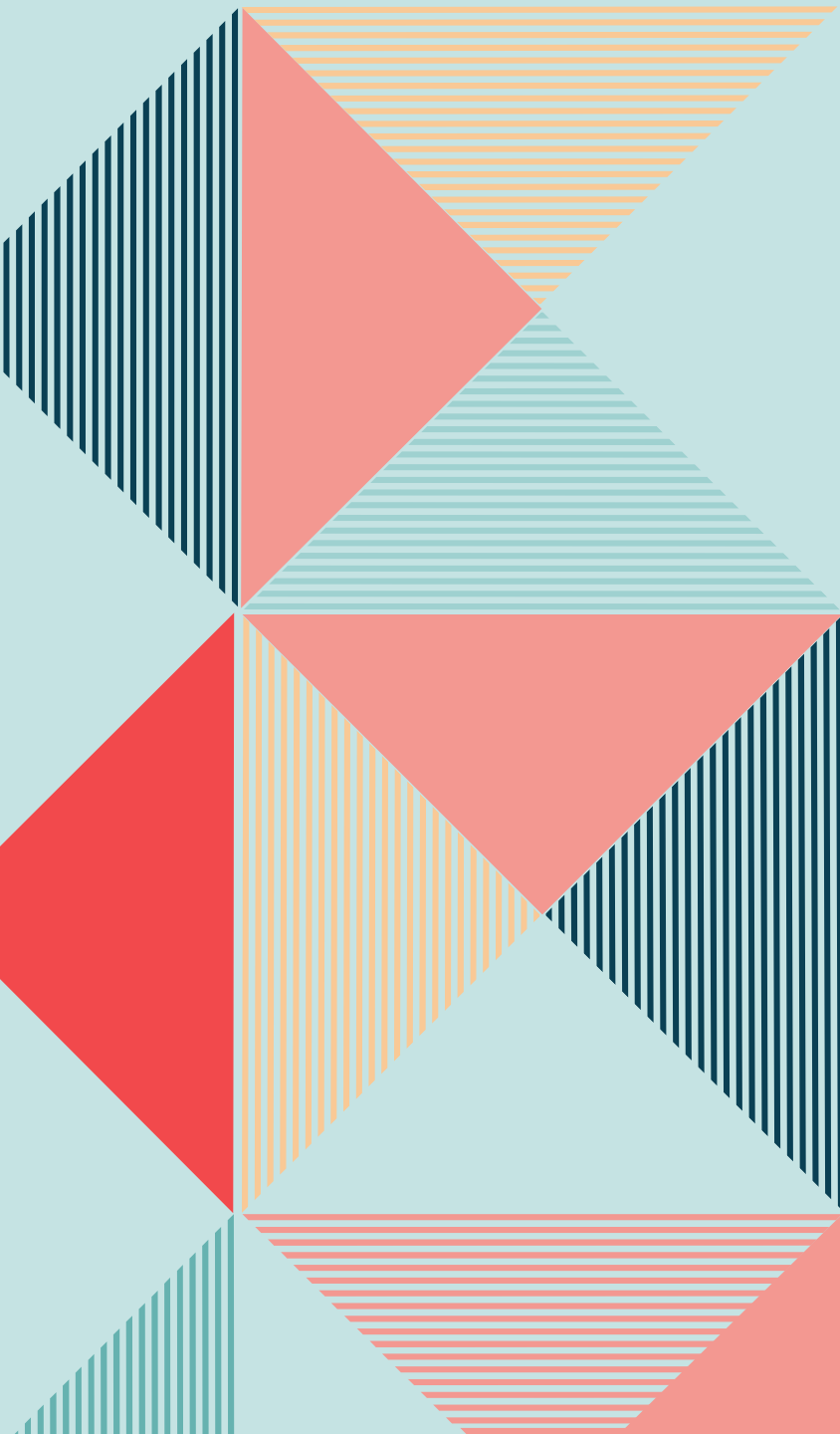
How are you currently involved with Community Engagement + Systems Change work in your local and/or statewide community? Offer specific examples

#2:

Where do you see opportunities to be more involved? Offer specific examples

#3:

What concrete steps (1-2) can you take to enhance/improve/increase housing options for survivors within your sphere of influence/community within the next year?



FUTURE OF SUPPORTIVE HOUSING

MORE TIME FOR SURVIVORS

24 months +

MORE FOLLOW-UP SERVICES POST-RESIDENCY

Housing stability support, housing navigators, direct assistance for housing and related costs

MORE FLEXIBLE FUNDING/CASH ASSISTANCE

Financial emergency funds with public and private sources, More tangible resources (transportation assistance, connection & deposit assistance, medical costs, & accessible + quality childcare)

MORE DV HOUSING FIRST APPROACHES

Immediate housing, especially if shelter is not needed, wanted, or available; distinct separation from TH/shelter programs, Longer RRH with DVHF/supportive services,

MORE SURVIVOR-DESIGNED FUTURES

Trauma-informed continuum of housing – responsive to survivor's particular needs, more options – mobile advocacy, help to stay in home

An abstract graphic on the left side of the slide consists of several 3D rectangular blocks of varying heights and colors. The colors include red, teal, orange, and brown. The blocks are arranged in a way that suggests depth and perspective, with some blocks appearing to be stacked or placed next to each other.

SYSTEMS COLLABORATION

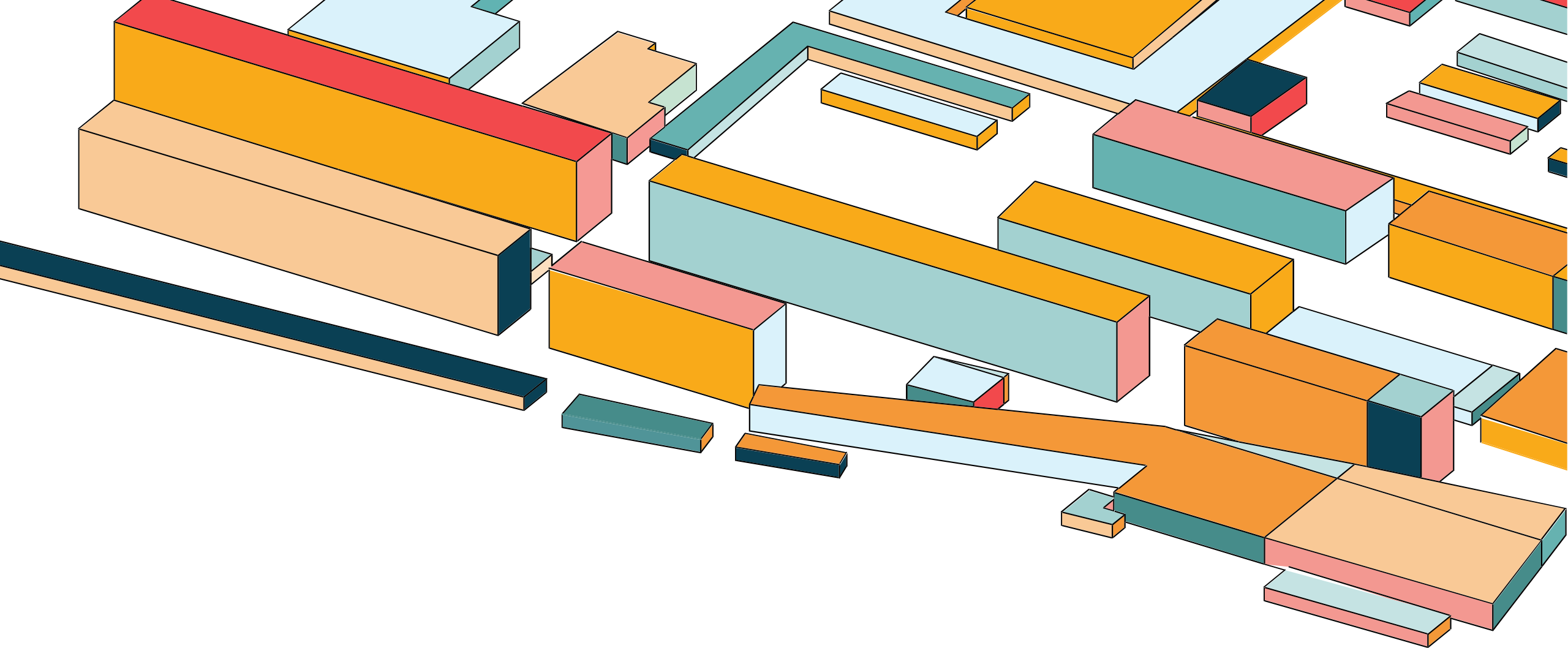
INCORPORATING SURVIVOR VOICES + EXPERIENCES

SAFE ACCESS FOR SURVIVORS WITHIN SYSTEMS

Coordinated Entry, DV Workarounds, +


EXPANDING OPTIONS

DV BONUS FUNDS



HOUSING PROTECTIONS

FEDERAL + STATE



**victims are more likely to have
a problem finding housing
because of their unique & often
urgent situation, poor credit,
rental & employment histories,
& limited income due to inability
to collect and/or enforce child
support & alimony payment
-reif**

HOUSING IMPLICATIONS



TENANT'S RIGHT TO POLICE / EMERGENCY ASSISTANCE

Victims of family violence have maintained a legal right to summons the police or emergency assistance without fear of penalty since 2003

Texas Property Code
Section 92.015 (a) and
(b) as amended

- Extends this right to any tenant with a reasonable belief that an individual is in need of intervention or emergency assistance regardless of the reason
- A landlord may not prohibit or limit this right
- A lease is void if any provision attempts to waive this right or exempt any party from liability under this section

LEASE TERMINATION FOR DV, SA, SEXUAL ABUSE & STALKING

Texas Property Code § 92.016-
§92.0161

- A victim of family violence, sexual assault, or stalking may have the right to terminate her/his lease



LEASE TERMINATION

- Notice to Vacate Forms
- Third Party Certification Form
- Advocate Guide to Lease Termination

HOUSING PROTECTIONS: FEDERAL

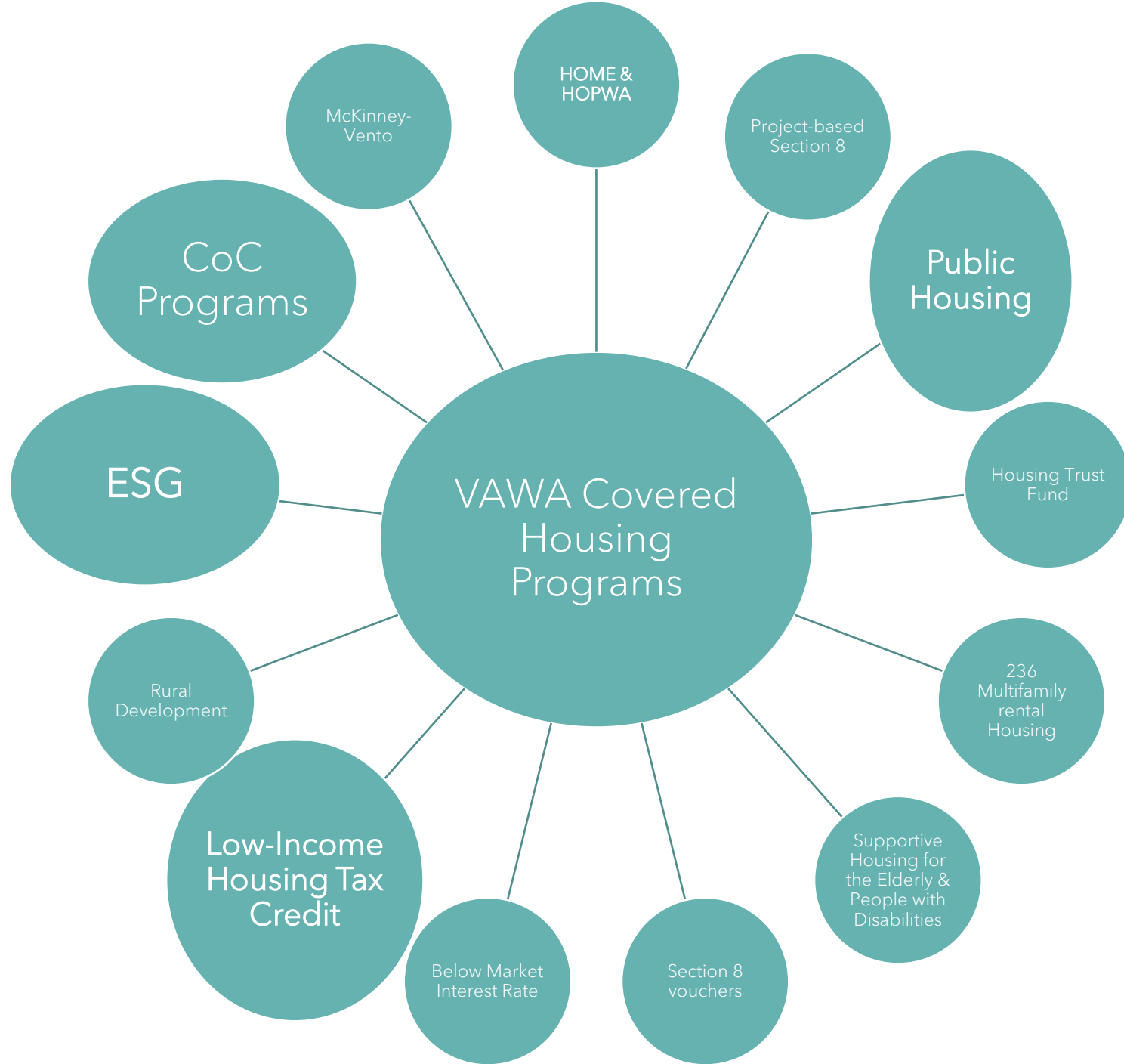
Violence Against Women Act (VAWA)



2005: Initial Housing Title included in VAWA



2013: Expands application of protections to victims residing in 'covered housing programs' that are federally administered



An applicant or tenant may NOT be:

Denied Admission or Assistance

From participation in housing on the basis is or has been a victim of domestic violence, sexual assault, dating violence, or stalking

Evicted

On the basis that the tenant is or has been the victim of domestic violence, sexual assault, dating violence, or stalking

PROTECTIONS FROM ADVERSE FACTORS

Applicant or tenant may not be denied admission to, denied assistance, terminated from participation, or evicted

On the basis of OR as a direct result of victimization (e.g. criminal history or poor credit)



Bifurcation

Covered housing programs may...

Evict,
remove, or
terminate the
assistance
of the
offender

Allow the
victim,
who is the
tenant or
lawful
occupant,
to remain
without
penalty

Provide 90 days to establish
eligibility for a covered housing
program

EMERGENCY TRANSFERS

Each federal agency must adopt a model emergency transfer plan to be used by PHAs, owners, or managers of housing assisted under the “covered housing programs”

This transfer plan must:

allow survivor tenants to transfer to another available and safe dwelling unit assisted under a “covered housing program” under certain circumstances, and describe policies for assisting tenants to make emergency transfers when a safe unit is not immediately available

The background features a collection of 3D rectangular blocks in various colors including teal, orange, red, and pink, arranged in a cluster on the left side. A large white rectangular box with a thin black border is positioned on the right side of the image.

RESOURCES

FIND YOUR LOCAL PROGRAM!

TCFV Service Directory

www.tcfv.org → Publications

→ Statewide Program
Directory

→ 2019 Directory

https://tcfv.org/wp-content/uploads/2021/04/tcfv_fv_srv_prgms_statewide_directory_2019.pdf

TAASA Directory

www.taasa.org → Get
Help →

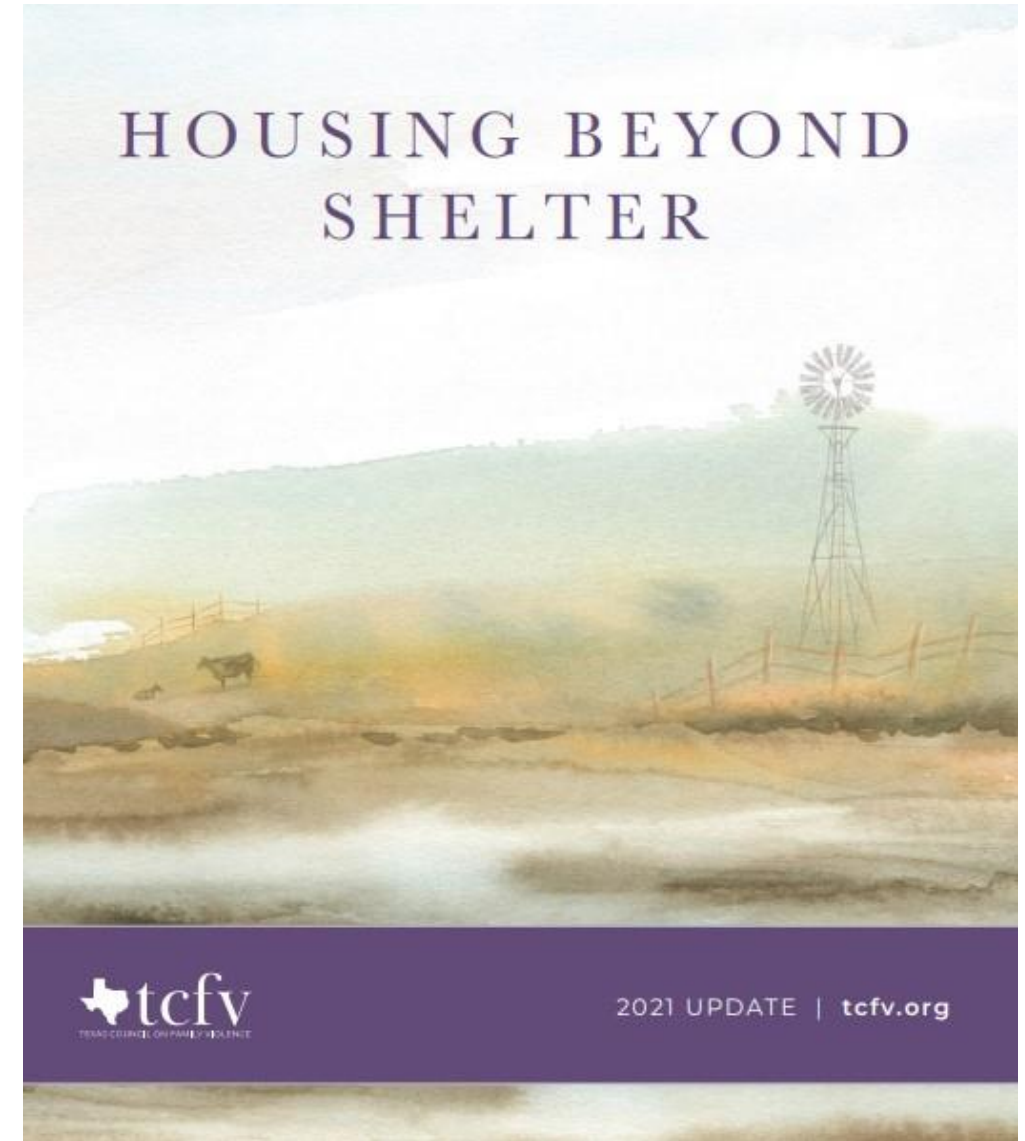
Crisis Center Locator →

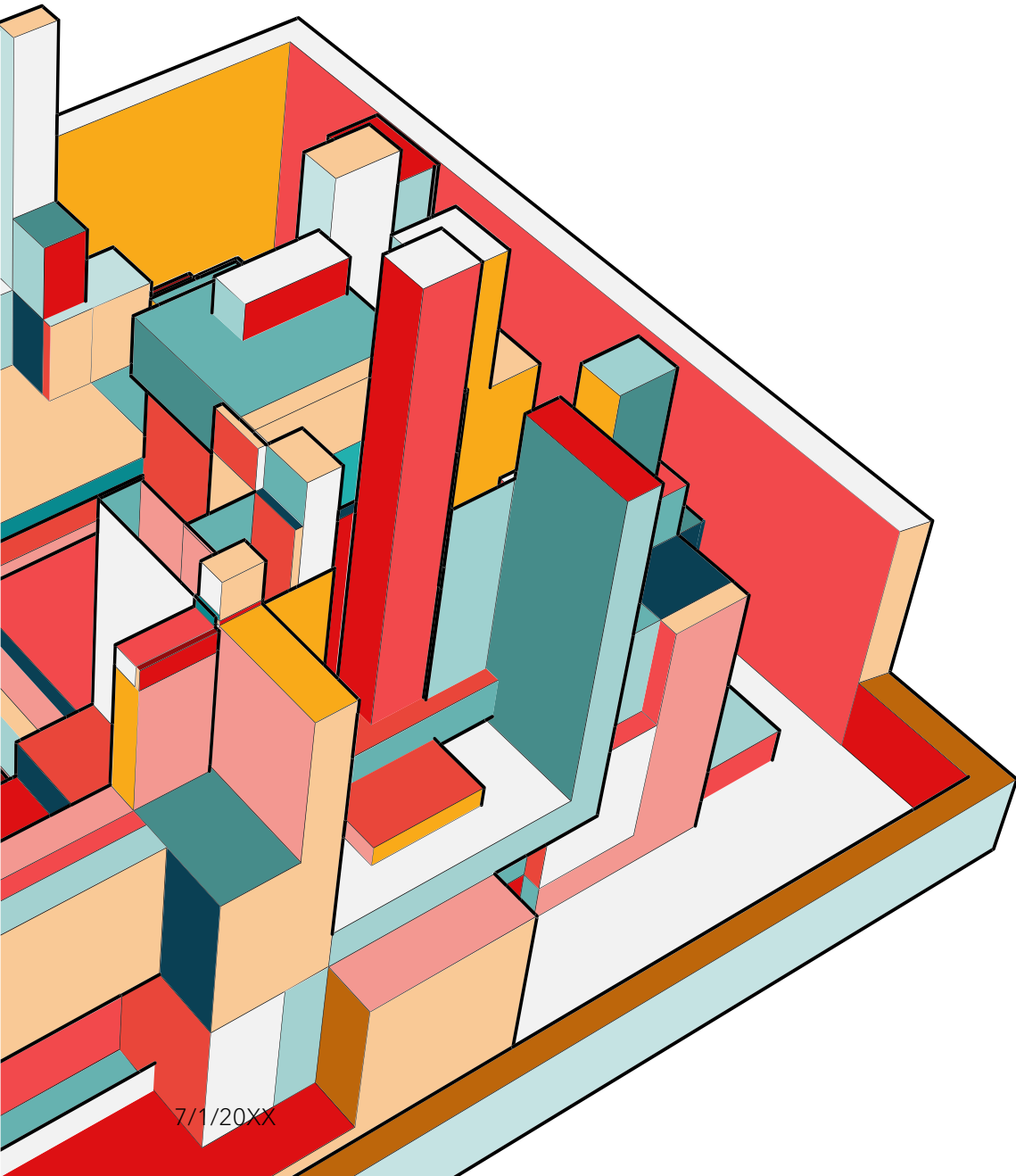
Download the Service
Directory

<https://taasa.org/wp-content/uploads/2022/05/Service-Directory-4-29-22.pdf>

DV PROGRAM HOUSING OPTIONS CHART

- Listed by County + Program
- Flexible Funding/Direct Client Assistance
- Transitional Housing (Scattered/Site-Based)
- Rapid Re-Housing
- Permanent Supportive Housing
- Tax Credit Properties
- Homelessness Prevention
- Voucher Based Housing





SUMMARY

At Contoso, we believe in giving 110%. By using energy efficient building methods, we help commercial businesses grow and foster a consumer first mindset. We thrive because of our market knowledge and a great team behind our product. As our CEO says, "Efficiencies will come from proactively transforming how we do business."

THANK YOU

Molly Woodard Thibodeaux

mthibodeaux@tcfv.org

www.tcfv.org