

Texas Balance of State Continuum of Care

CoC General Membership Meeting

March 28, 2023

Notes

Attendees: see attached list of attendees

Texas Homeless Network staff presented a “CoC Orientation.” See attached slides.

See the CoC Orientation video on THN’s YouTube channel at

<https://www.youtube.com/watch?v=kuPDymAD820&t=17s>

Become a CoC Member!

Anyone who works or lives in the CoC's geographic area, and all housing and homeless services projects in the CoC's geographic area, are considered to be members of the CoC. The CoC has an open invitation process, so people may join at any time. THN invites members to participate in the CoC's activities. Learn more on the [email list](#), the [website](#), and [social media](#).

CoC General Meetings include presentations by and conversations between CoC members and staff on topics that are important to preventing and ending homelessness. Meeting information is posted on THN’s website at <https://www.thn.org/texas-balance-state-continuum-care/join-us/#bos-gen-meetings>, and notes and recordings are posted at <https://www.thn.org/texas-balance-state-continuum-care/get-involved/>.



Texas Balance of State Continuum of Care

March 28, 2023, CoC General Membership Meeting Attendees

Name
Online Attendees
Adriana Alvarado
Alana Jeter
Alanna Richarson
Alexis Stockton
Alice Jewell
Allura Guerra
Amanda Cruz
Andrea Quiroz
Angelica Pedraza
Anne Spanyers
Anthony Blain
Ashley Pruitt
Astrid Dominguez
Aubrey Fetzer
Ava Paredes
Azhalia Ramirez
Bari Gamble
Bobby Ehrig
Camila Rodarte
Chesley Knowles
Cinda Hayward
Cindy Rodriguez
Crystal Keene
Crystal Session
Curran Oakley
Dacey Werba
Daisy Lopez
Dalia Villarreal
Daphne' Houston
DEBRA WASHINGTON
Diana Clough
DrueS Farmer
Edward Lawson
Elizabeth Rodriguez
Faye Sigle
Frances I stuart

Texas Balance of State Continuum of Care

Gloria Luna
Grace Radden
Guadalupe Garza
Heidi Riggs
Helen Garcia
Hope Rodgers
Imelda Gomez
Isaac Garnett
Isaac Garnett
Jacob Zamorano
Janeal White
Jen Beardsley
Jennifer Chisholm
Jennifer Chisholm
Jes Prince
Jessica Murphy
Jim Stephens
Jim Ward
Jo Anne Longoria
John Meier
Josefina Arredondo
Jusli Blain
Kamaria Woods
Kayla Davis
Keturah Garnerway
Kim Fuller
Kim Pickens
Kraig Blaize-Fiero
Lindsay LaGrange
Lyzette Limon
Madeline Ennis
Madilyn Jagers
MALINDA FAUGHN
Marcela Cervantes
Margaret Hill
Margaret Marsh
Mariana Krueger
Mark Richardson
Marsha Rappaport
Marsha Rappaport
Mary Essex
Mary Perez

Texas Balance of State Continuum of Care

Mary Stahlke
Melinda Baker
Melissa Escamilla
Michelle Hunter
Monica Bautista
Monica Martin
Nicholas Taylor
Nicole Roberts
Norma Rodriguez
Paul Castaneda
Peg Purser
Perla Trevino
Perry Covington
Renea Wilson
Rhonda Williamson
robert holton
Sandee Alvarez
Sandra Barba
Sandra Regalado
Stephanie Norris
Tamara Duncan
Tanya Roper
Tatianna Cedillo
Thurman Bryant
Tiffany Ross
Titilayo Smith
Tommy Lee Martinez
Torrey Gray
Valerie Bustos
Valerie Longoria
Wallace Revalee



TX BoS CoC General Member Orientation

Strategies For Change

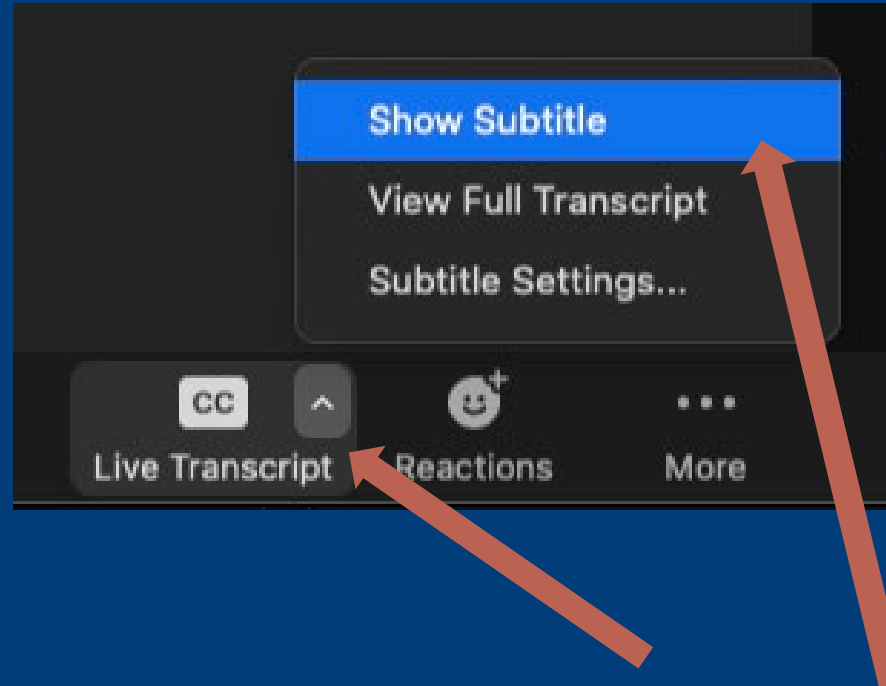
thn.org

Airport Lounge by Kevin MacLeod | <https://incompetech.com/>
Music promoted by <https://www.chosic.com/free-music/all/>
Creative Commons CC BY 3.0
<https://creativecommons.org/licenses/by/3.0/>



WELCOME
WE'RE GLAD YOU'RE HERE!

Closed Captioning

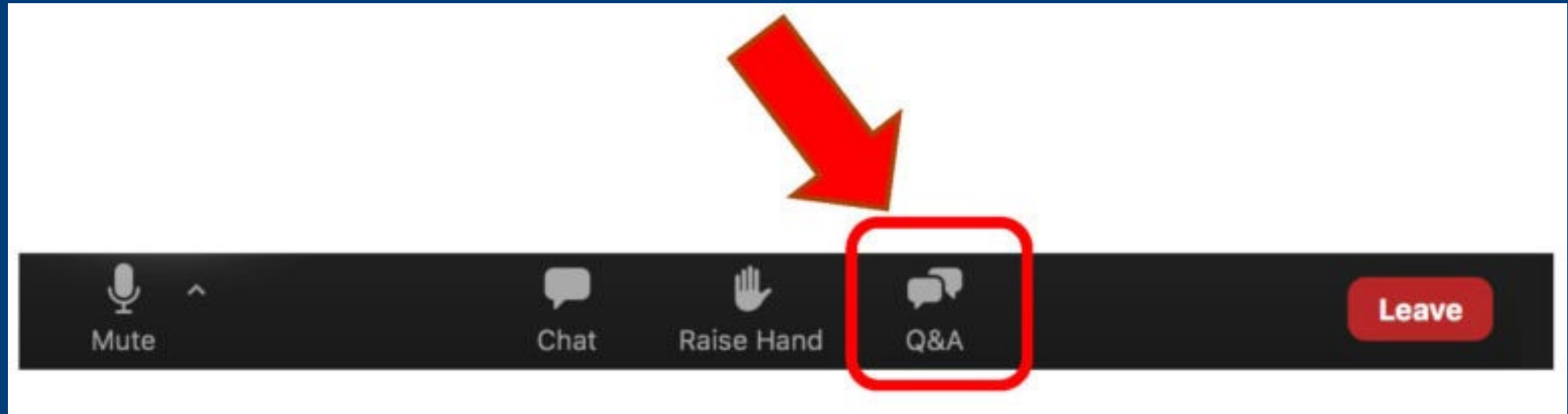


Click arrow next to **Live Transcript**
and click **Show Subtitle**

Overview

- Introduction
- Terminology and Concepts
- Local Homeless Coalitions
- Point in Time Count
- Homeless Management Information System
- Federal Funding
- Texas Homeless Network Staff
- Get Involved
- Time for Questions from Attendees

Q&A



Click **Q&A** to enter your questions.
We will answer them at the end of the presentation

Texas Homeless Network

Mission Statement

We lead Texas communities to make homelessness rare, brief, and non-recurring.

Organizational Activities:

- Advocacy
- CoC Collaborative Applicant
- HMIS Lead Agency



Texas Balance of State Continuum of Care

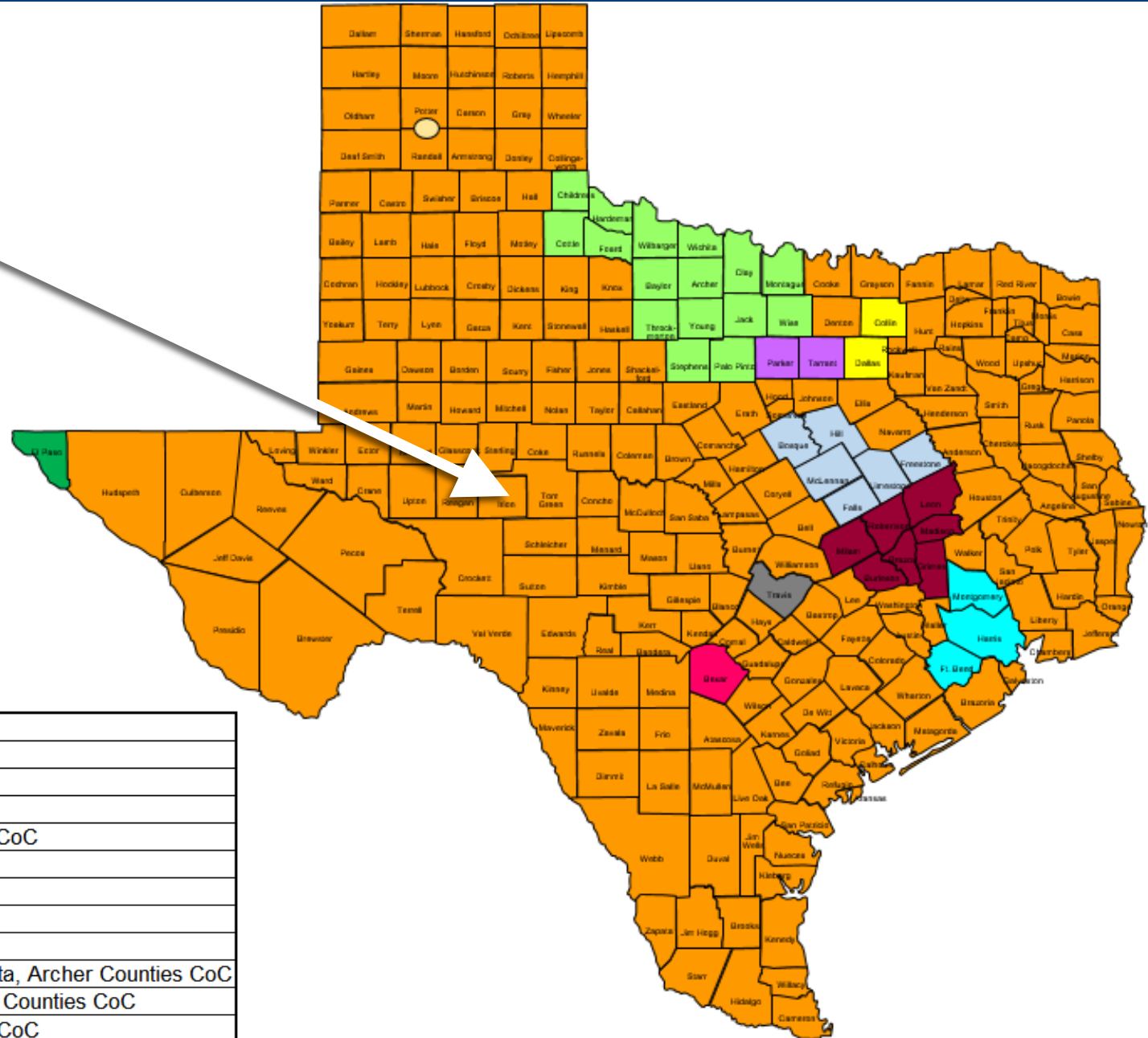
Mission Statement

The TX BoS CoC develops system-level responses and coordinates local community strategies that prevent and end homelessness and increase housing stability.



- **What is a Continuum of Care?**
- **What is a Balance of State Continuum of Care?**

Texas Balance of State Continuum of Care

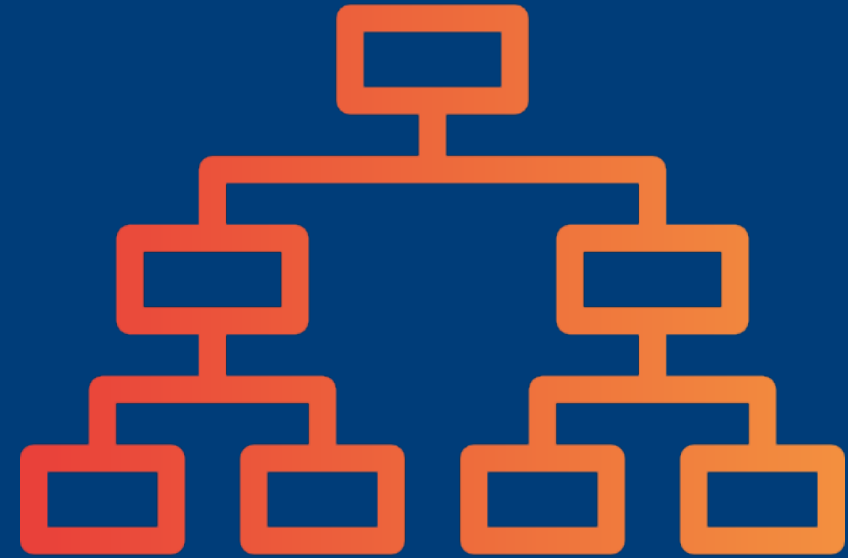


Map Key

TX-500	San Antonio/Bexar County CoC
TX-503	Austin/Travis County CoC
TX-600	Dallas City & County, Irving CoC
TX-601	Fort Worth, Arlington/Tarrant County CoC
TX-603	El Paso City & County CoC
TX-604	Waco/McLennan County CoC
TX-607	Texas Balance of State CoC
TX-611	Amarillo CoC
TX-624	Wichita Falls/Wise, Palo Pinto, Wichita, Archer Counties CoC
TX-700	Houston, Pasadena/Harris, Fort Bend Counties CoC
TX-701	Bryan, College Station/Brazos Valley CoC

Governance Structure

- General Membership
- TX BoS CoC Board
- TX BoS CoC Committees
- Texas Homeless Network
- Local Homeless Coalitions (LHCs) and Coordinated Entry Planning Entities (CEPEs)



A decorative border of colorful house icons surrounds the central text. The houses are in various colors including purple, green, blue, red, and grey, and are arranged in a grid-like pattern.

Contact Information

Margaret Hill
Governance Coordinator

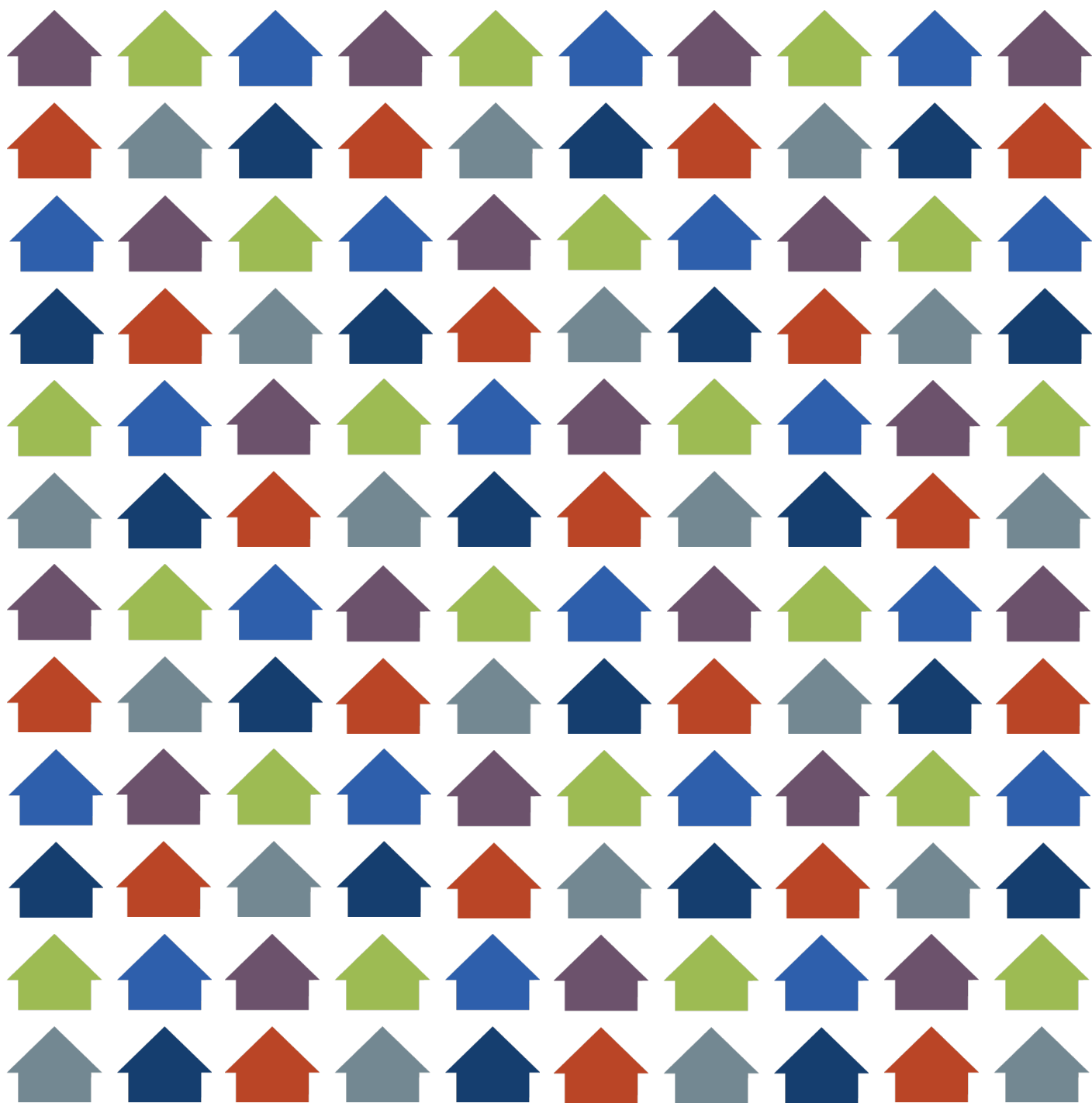
Email: margaret@thn.org
Phone: (512) 861-2181



Thank you!

Strategies For Change

thn.org



Terminology and Concepts

Strategies For Change

thn.org

Organization

- Continuum of Care (CoC)
 - Texas Balance of State Continuum of Care (TX BoS CoC)
 - Continuum of Care Program (CoC Program)
 - Homeless Emergency and Rapid Transition to Housing (HEARTH) Act
- Groups
 - U.S. Department of Housing and Urban Development (HUD)
 - U.S. Interagency Council on Homelessness (USICH)
 - Texas Interagency Council for the Homeless (TICH)
 - Local Homeless Coalitions (LHCs)

Definitions and Interventions

- Definitions
 - Homeless
 - Chronically homeless
- Interventions
 - Homelessness Prevention (HP)
 - Street Outreach (SO)
 - Diversion
 - Emergency Shelter (ES)
 - Transitional Housing (TH)
 - Rapid Re-Housing (RRH)
 - Permanent Supportive Housing (PSH)

CoC Activities

- CoC Planning
- Applying for CoC Program funds
- Point-in-Time (PIT) Count and Housing Inventory Count (HIC)
- Homeless Management Information System (HMIS)
- Coordinated Entry (CE)

A decorative border of colorful house icons surrounds the central text. The houses are in shades of purple, green, blue, red, and grey, arranged in a grid-like pattern.

Contact Information

Mary Stahlke
Director of Engagement
for the TX BoS CoC

Email: mary@thn.org
Phone: (512) 861-2180

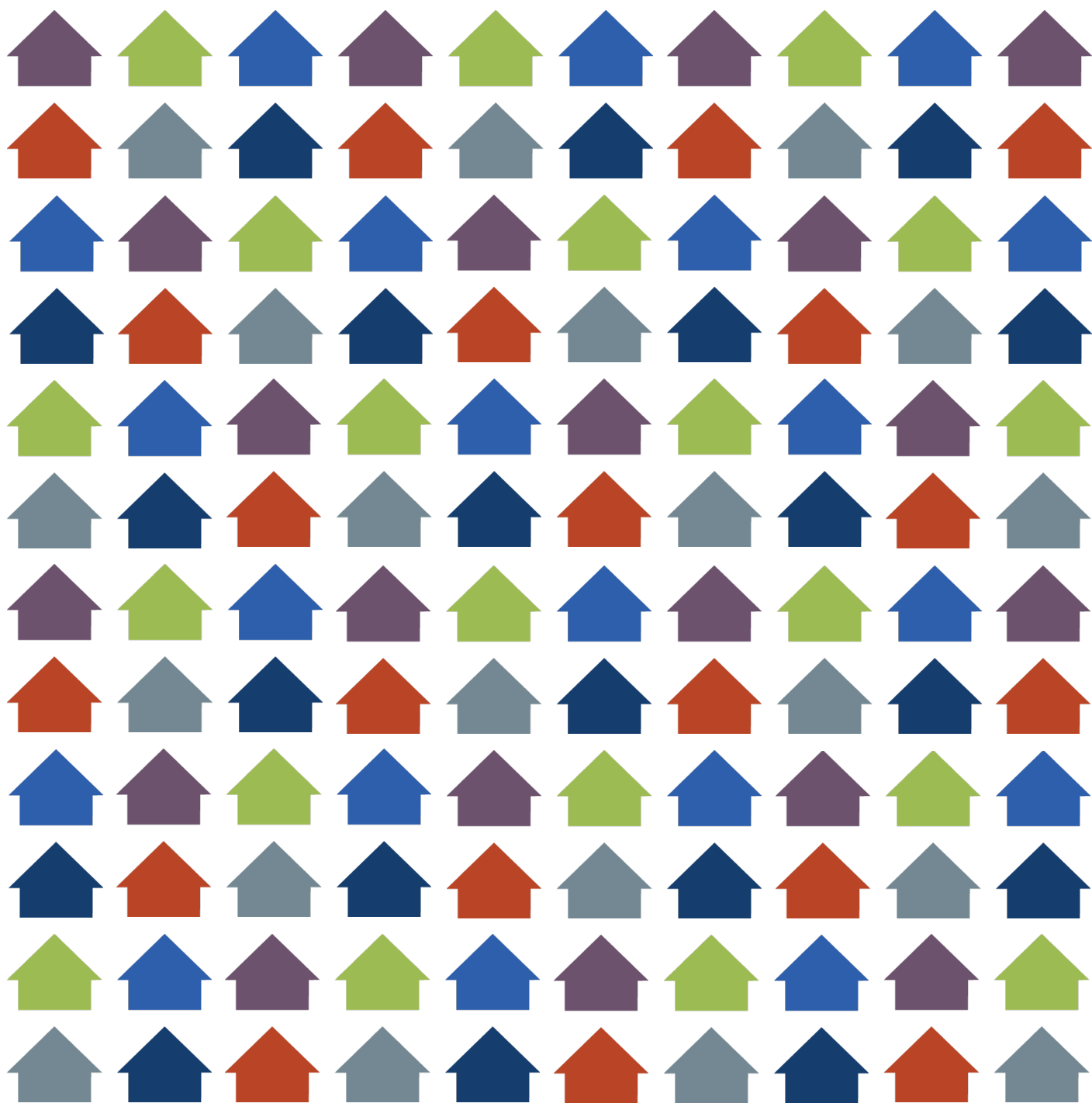
*Engaging members in the work
of the TX BoS CoC*



Thank you!

Strategies For Change

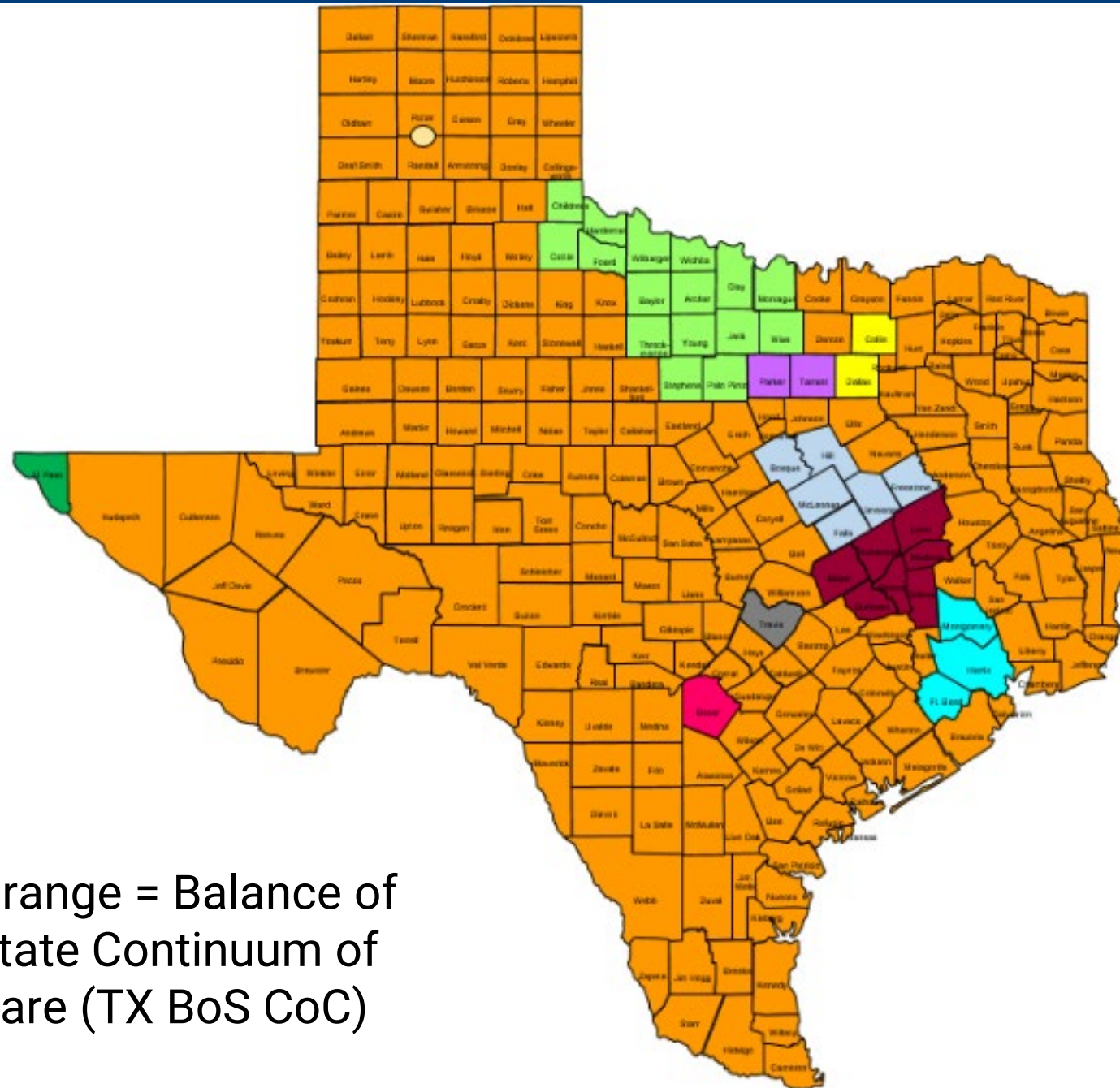
thn.org



Local Homeless Coalitions

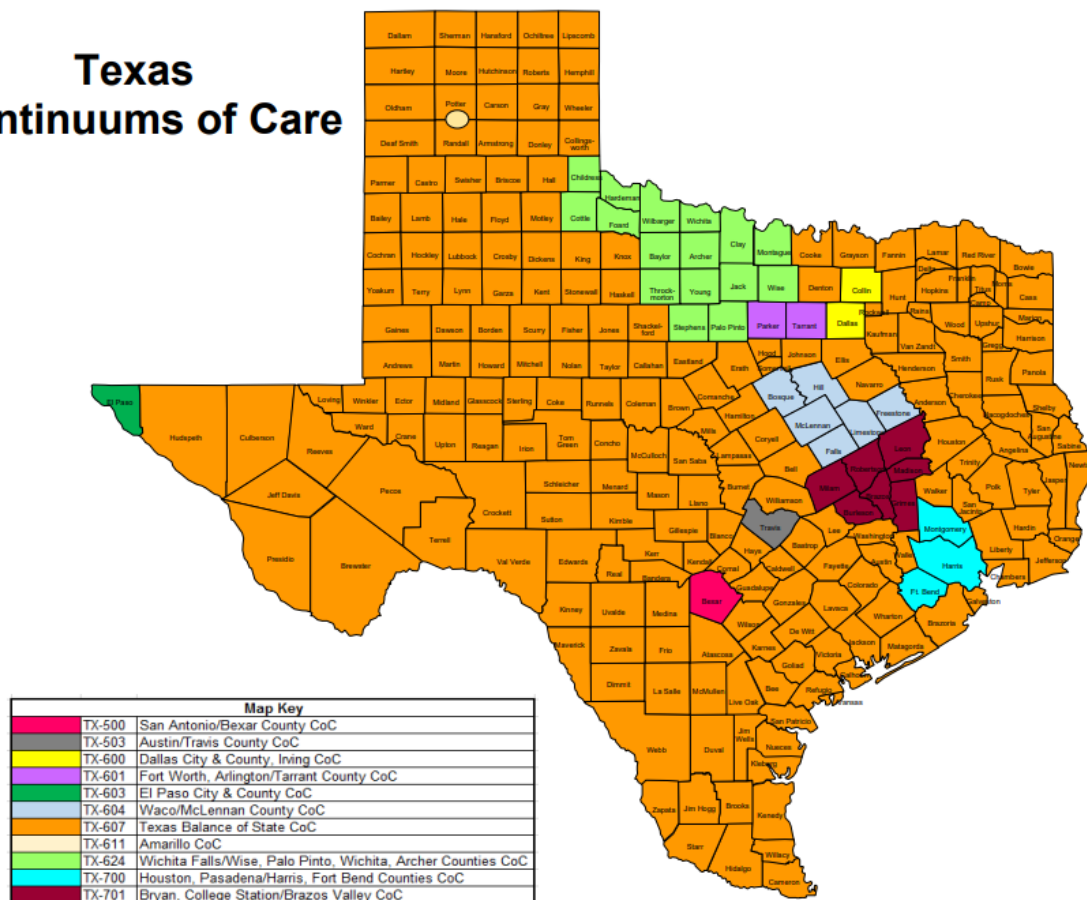


Strategies For Change



Orange = Balance of
State Continuum of
Care (TX BoS CoC)

Texas Continuums of Care



Smaller CoCs usually function as one unit

CoCs that cover smaller geographic areas only need one planning body for the region. The CoC lead agency typically takes on connecting all relevant actors in their coverage area.



Largest Continuum of Care in Texas (by landmass)

215 TX counties (84.5% of TX counties, 87% of land mass)

13 million residents (44.5% of TX population)

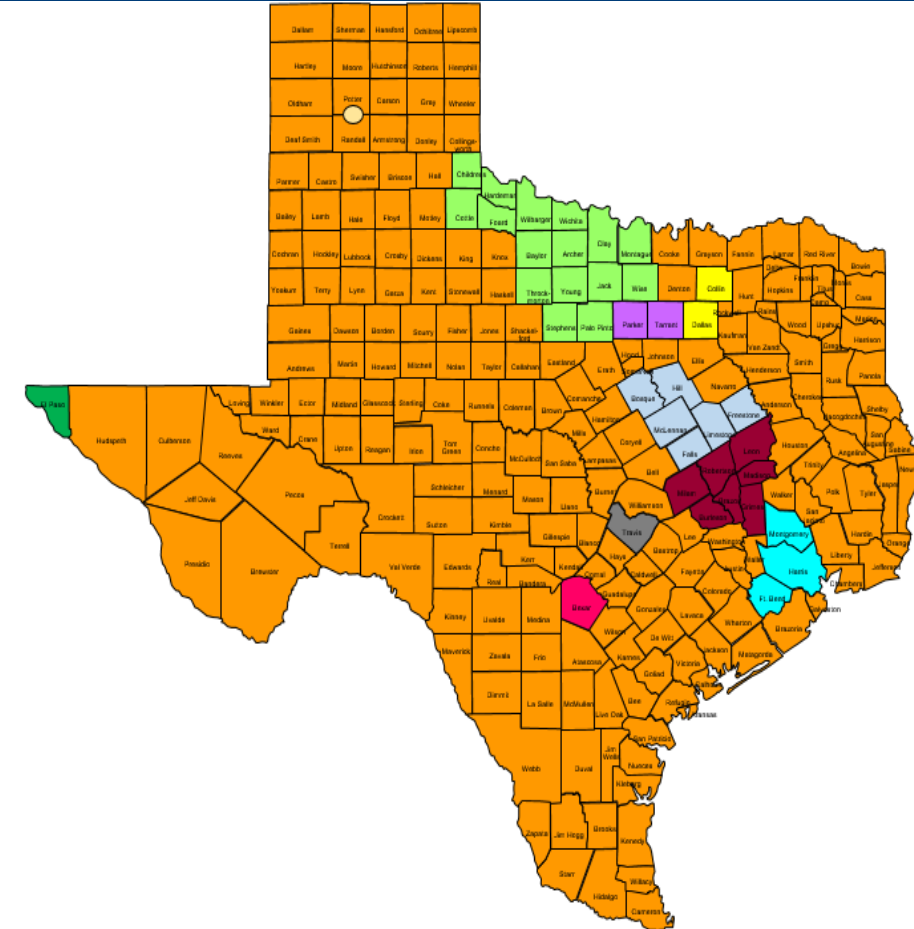
2022 counts show **7,054 individuals** experience homelessness in the BoS and **27,229** in the entire state on any given night (BoS has 26% of entire unhoused TX pop.)

Large geography and varying demographics

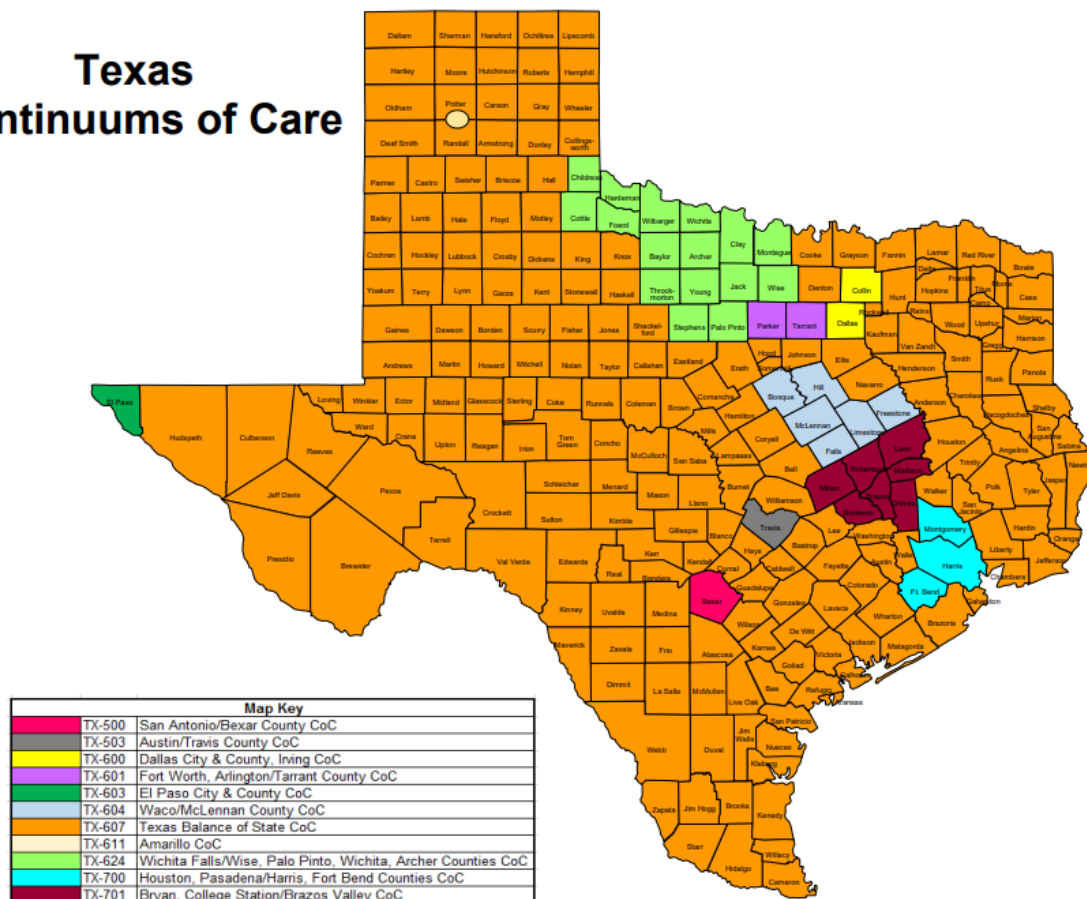
De-centralized service providers working in isolation

Differences in local resources/stakeholders

Shortage of affordable housing



Texas Continuums of Care

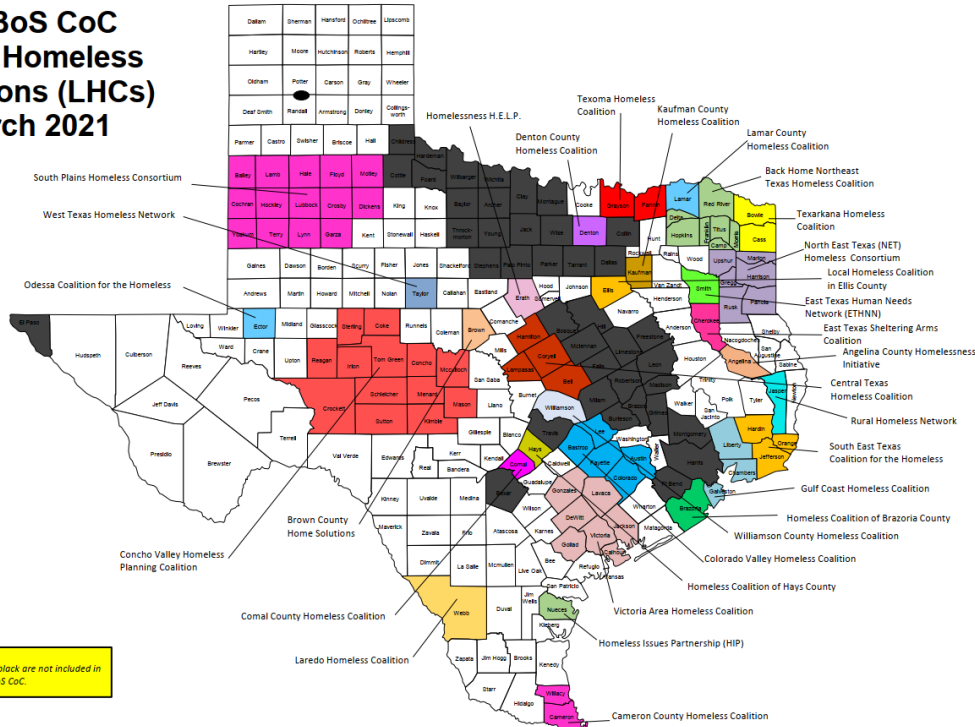


Larger CoCs need to break down into smaller jurisdictions

Large CoCs typically divide their geographies into smaller local planning entities in order to meet the diverse needs of a large geography.



**TX BoS CoC
Local Homeless
Coalitions (LHCs)
March 2021**



In the 215-county Balance of State Continuum of Care, these smaller planning bodies are called **Local Homeless Coalitions (LHCs)**.

LHCs: Groups addressing homelessness in a designated geography, such as a city, county, or cluster of counties within the TX Balance of State (BoS) CoC through networking.

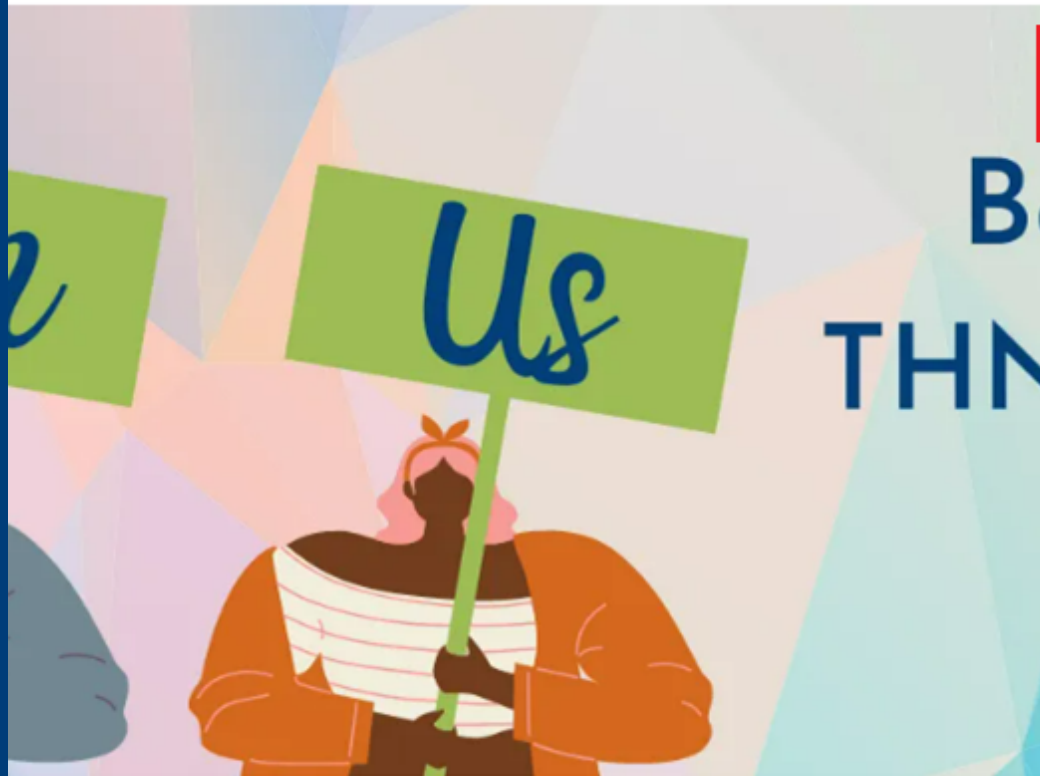
The CoC lead agency (THN) provides developmental support.



Benefits for Communities



- Create a shared awareness of existing resources among homeless services
- Create a better sense of what the unhoused community needs
- Improve communication and data and information sharing
- Expand networking & educational opportunities
- Increase efficiency of service delivery through coordination and elimination of duplicate services



About TX BoS CoC >

Join Us >

Continuum of Care Program >

Emergency Housing
Vouchers

Emergency Solutions Grant
(ESG) Program

Coordinated Entry (CE) >

Data >

Homeless Management
Information System >

News & Events

Membership

General Meetings

[Local Homeless Coalitions](#)

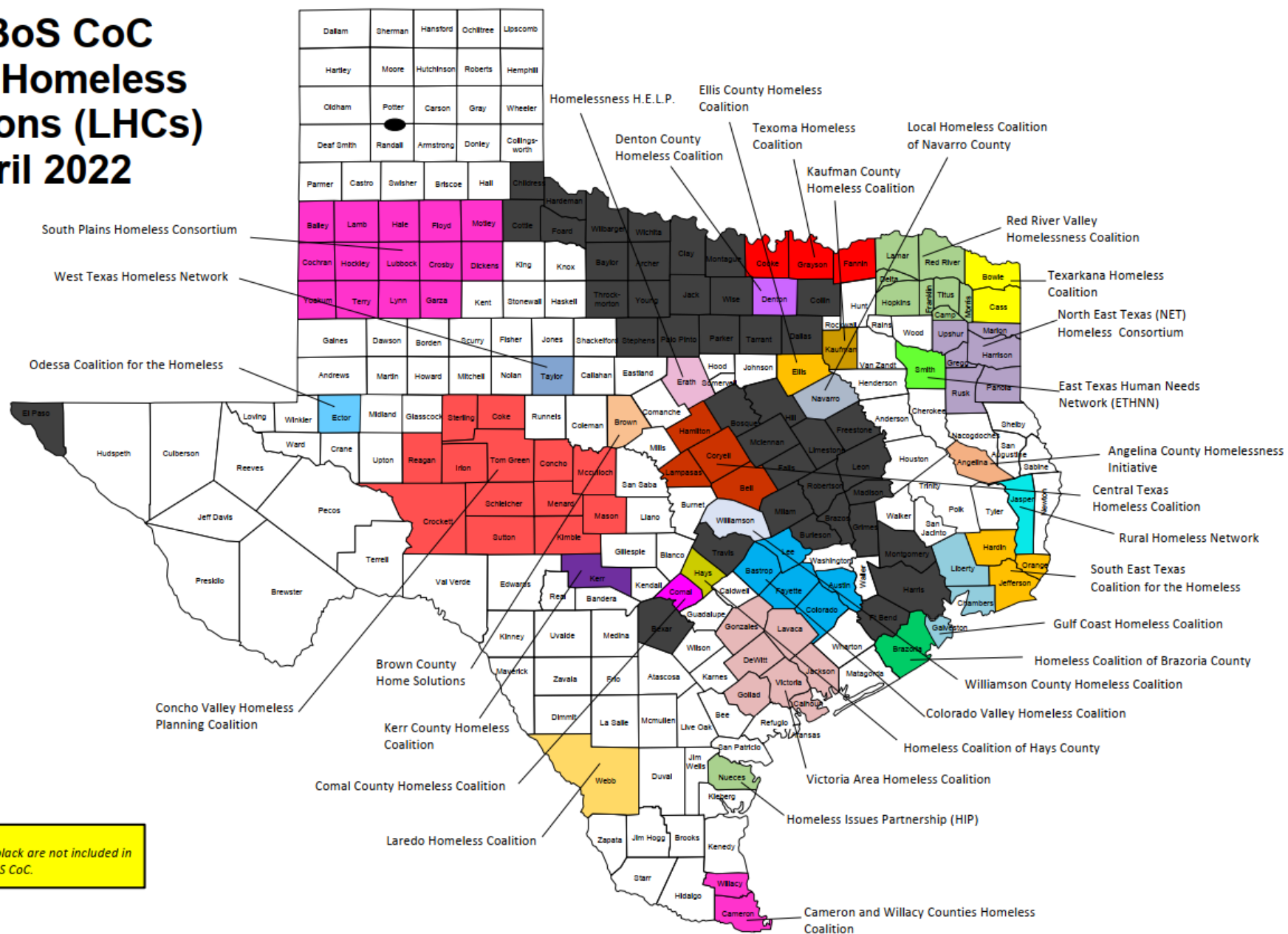
TX BoS CoC Committees

Public Comment

Consolidated Planning



**TX BoS CoC
Local Homeless
Coalitions (LHCs)
April 2022**



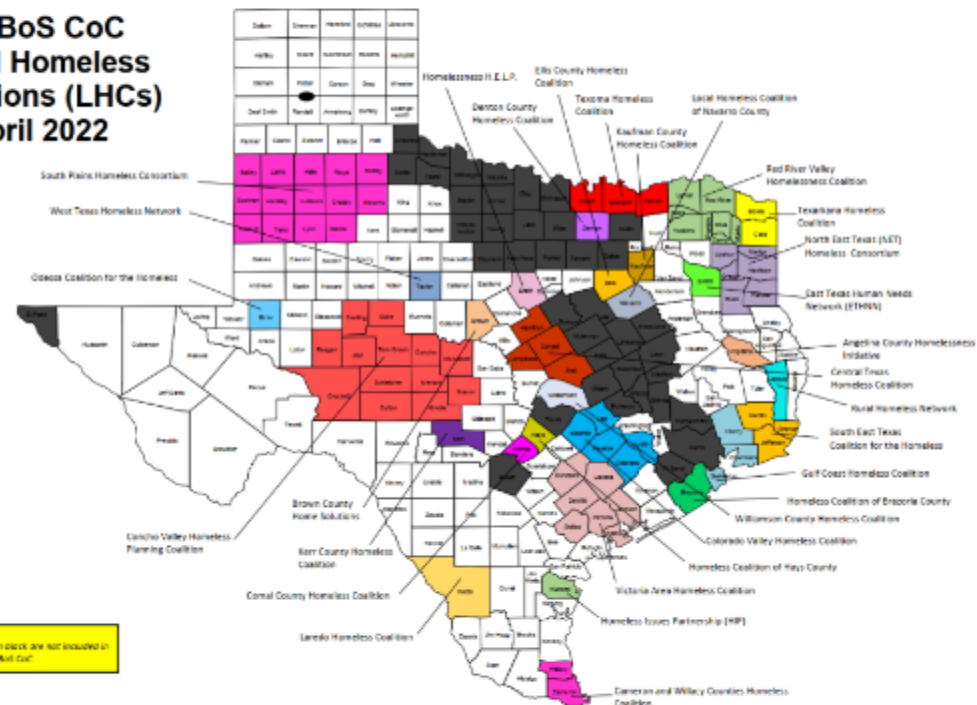
Local Homeless Coalitions

Local Homeless Coalitions (LHCs) are groups of organizations, individuals, and leaders interested in ending homelessness that meet face-to-face locally within Texas Balance of State communities. Local Homeless Coalitions make plans to address homelessness in their communities, pursue Continuum of Care goals, and lead local initiatives. There are approximately 31 Local Homeless Coalitions across the Texas Balance of State at this time. We recommend reaching out to the local homeless coalition's primary contact person to ask for a meeting schedule.

[Click here to access current Local Homeless Coalition contact information](#)

No Local Homeless Coalition (LHC) near you? Submit an information request found at the bottom of the page to request someone from Texas Homeless Network to reach out to you about starting an LHC.

TX BoS CoC Local Homeless Coalitions (LHCs) April 2022



[Click to enlarge](#)

A decorative border of colorful house icons surrounds the central text. The houses are in shades of purple, green, blue, red, and grey, arranged in a grid-like pattern.

Contact Information

Jen Beardsley
Local Homeless Coalition
Coordinator

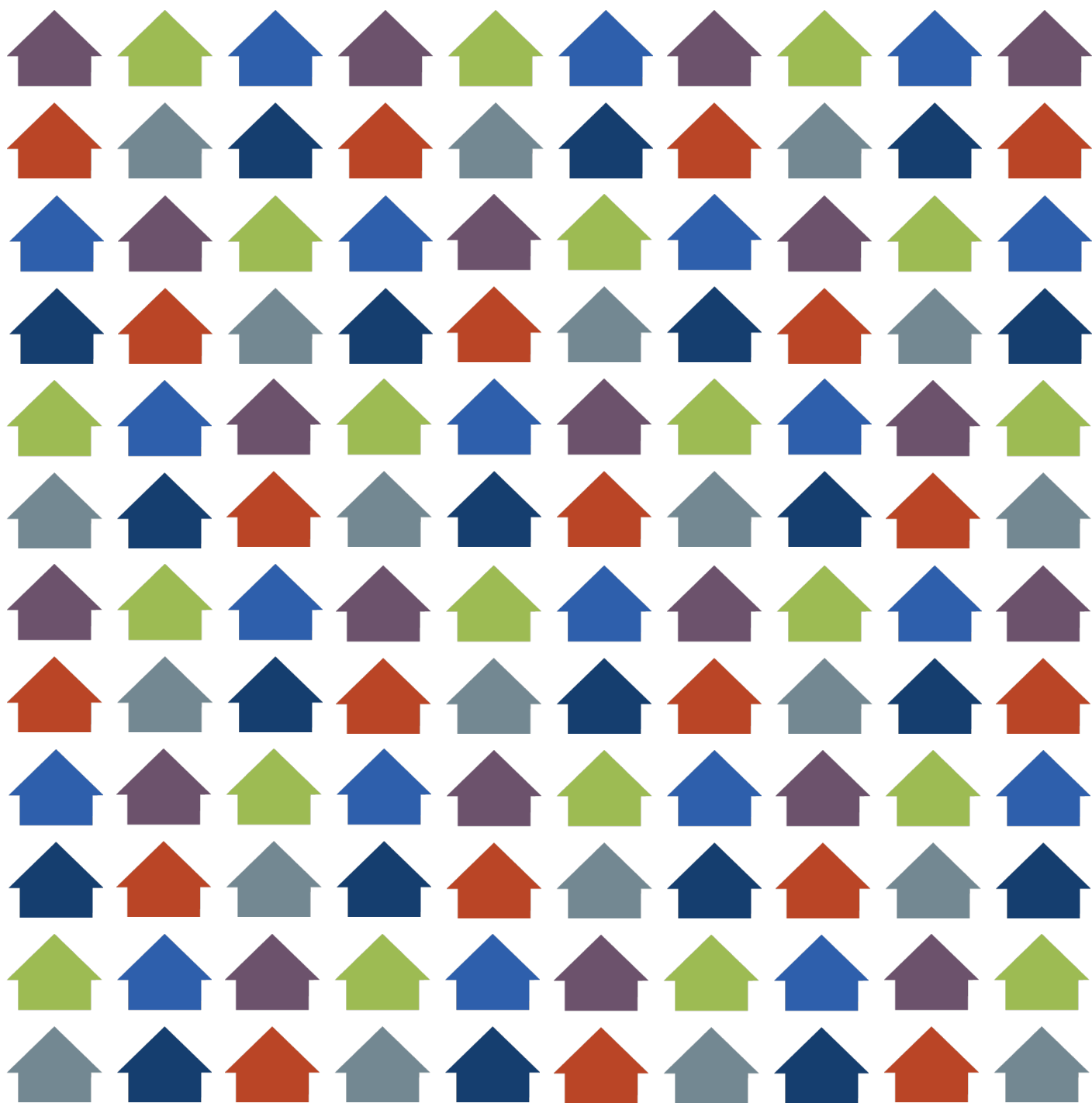
Email: jen@thn.org
Phone: (512) 861-2154



Thank you!

Strategies For Change

thn.org



PIT Count Orientation

Strategies For Change

thn.org

What Is the PIT Count?

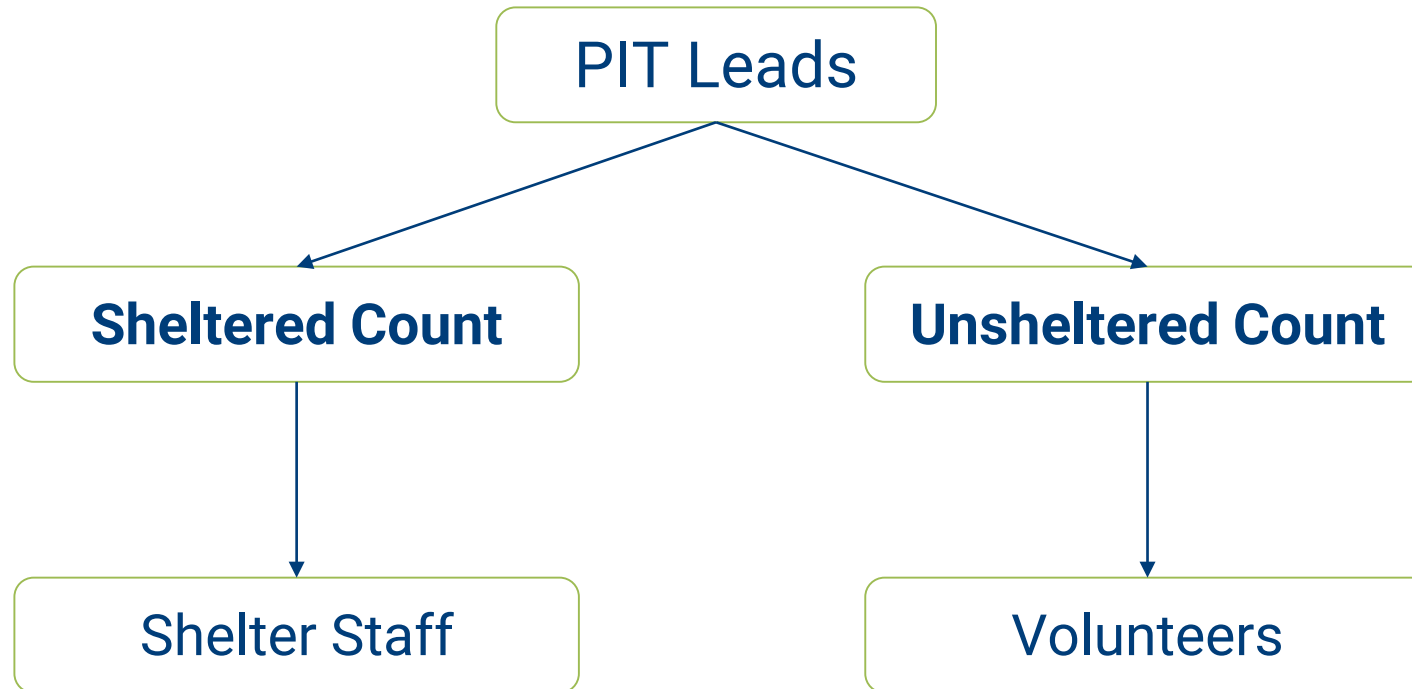
- Survey of individuals experiencing homelessness
- One night during the last 10 nights of January
- Gathering demographic qualitative data
- Gathering quantitative data on the number of people experiencing homelessness within our geography
- Gather data for both **sheltered** and **unsheltered** people

Module 2

Module 3



How Do We Do the PIT Count?



Why Do We Conduct a PIT Count?



A decorative border of colorful house icons surrounds the central text. The houses are in shades of purple, green, blue, red, and grey, arranged in a grid-like pattern.

Contact Information

Ava Paredes
Data Coordinator

Email: ava@thn.org
Phone: (512)-652-4714



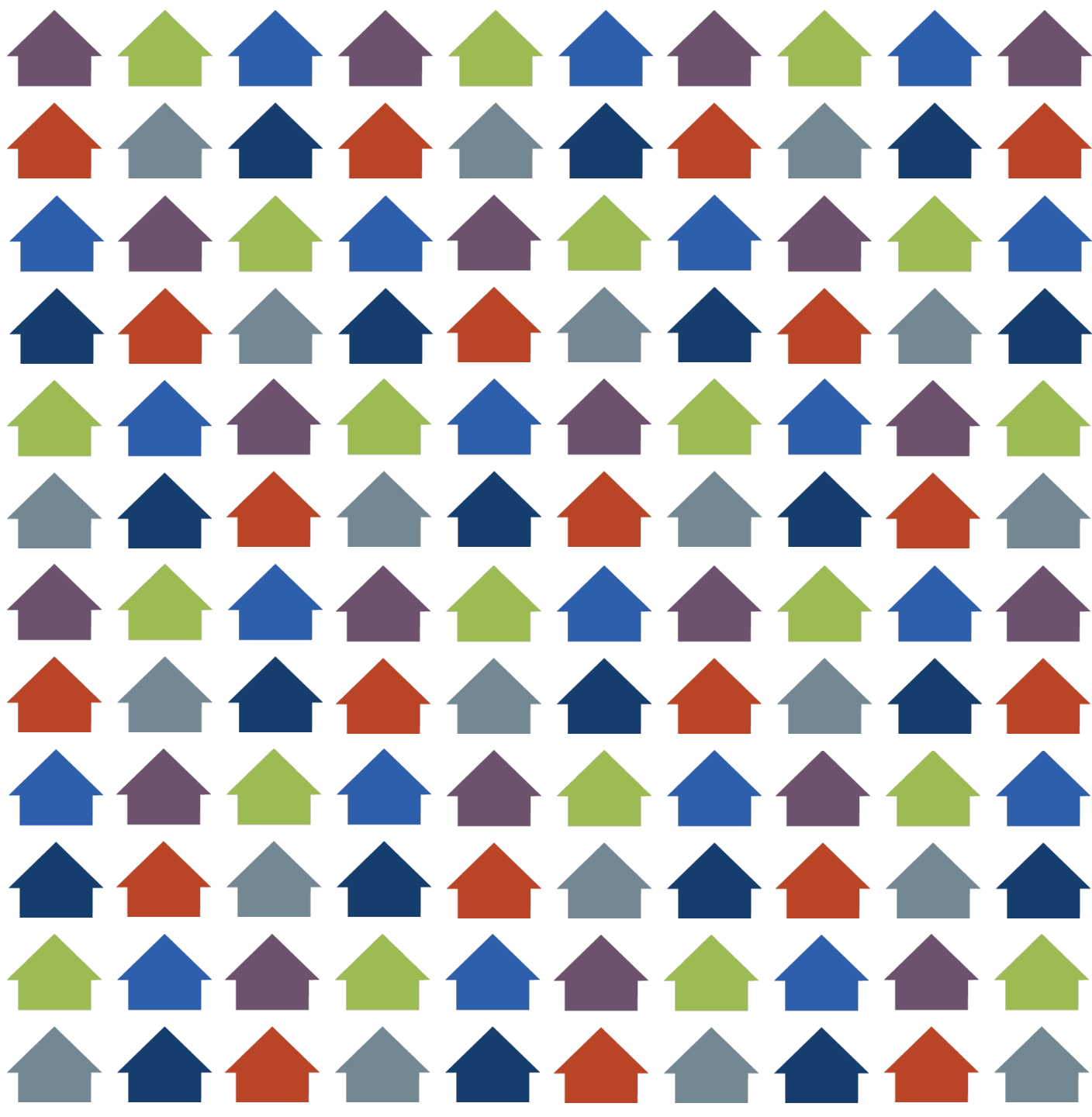
Thank you!

Strategies For Change

thn.org

LET'S TAKE A
BREAK





The Benefits of HMIS

Strategies For Change

thn.org

What is HMIS?

HMIS stands for **Homeless Management Information System** and it is a computerized data collection tool specifically designed to capture client-level information over time.

It collects information on the characteristics and service needs of individuals and families experiencing homelessness as well as the services provided to those clients.

Benefits for Providers

Data Driven
Decision Making

Utilize reports to
better
understand the
population you
serve

Organized data
for SPM & LSA
system reports

Coordinating
services within
your agency &
other agencies

Tools to gauge
client outcomes
& larger agency-
wide outcomes.

Benefits for Communities

Informing systems design and policy decisions

- By utilizing data to identify service gaps in our communities, we can better inform local and national policymakers.

Identifying service gaps

- HMIS makes it easy for administrators to find service gaps in the data by recording unmet needs, identifying returns to homelessness, and viewing waiting lists for permanent housing programs in your community.

Understanding the extent of homelessness

- HMIS creates an environment where community level data can be analyzed and interpreted, giving an important opportunity for system wide policy decisions.
- The more participants in HMIS creates a clearer and fuller picture of what is truly happening within our CoC.

Unduplicated client counts

- HMIS client level data is consistently audited for accuracy. HMIS administrators are able to thoroughly comb the system to ensure data accuracy as well as verify an unduplicated count of clients accessing services in the community

Benefits for Clients

Coordinated Case Management

- HMIS provides a way for case managers within different programs or agencies to see what assessments, services, and referrals a client has received.

Streamlined Referrals

- You can see when a referral was made, to where, and for what, as well as the status and result of the referral.
- For referrals to providers that also use HMIS, the referral is digital and instantaneous, meaning the client doesn't need to personally or manually keep track of their referrals.

Decrease of duplicate intakes and assessments

- When clients are entered into the HMIS system, their basic demographic information is saved to their personal record.
- Users can see when a client already exists in the system. This cuts down on potential duplication of clients, intakes, and assessments.

Trauma Informed, Client Centered Service

- HMIS assists assessors in creating a trauma informed space for clients who do not have to tell their story over and over again.

A decorative border of colorful house icons surrounds the central text box. The houses are in various colors including purple, green, blue, red, and grey, arranged in a grid-like pattern.

Contact Information

Gabrielle Llamas
Training Coordinator

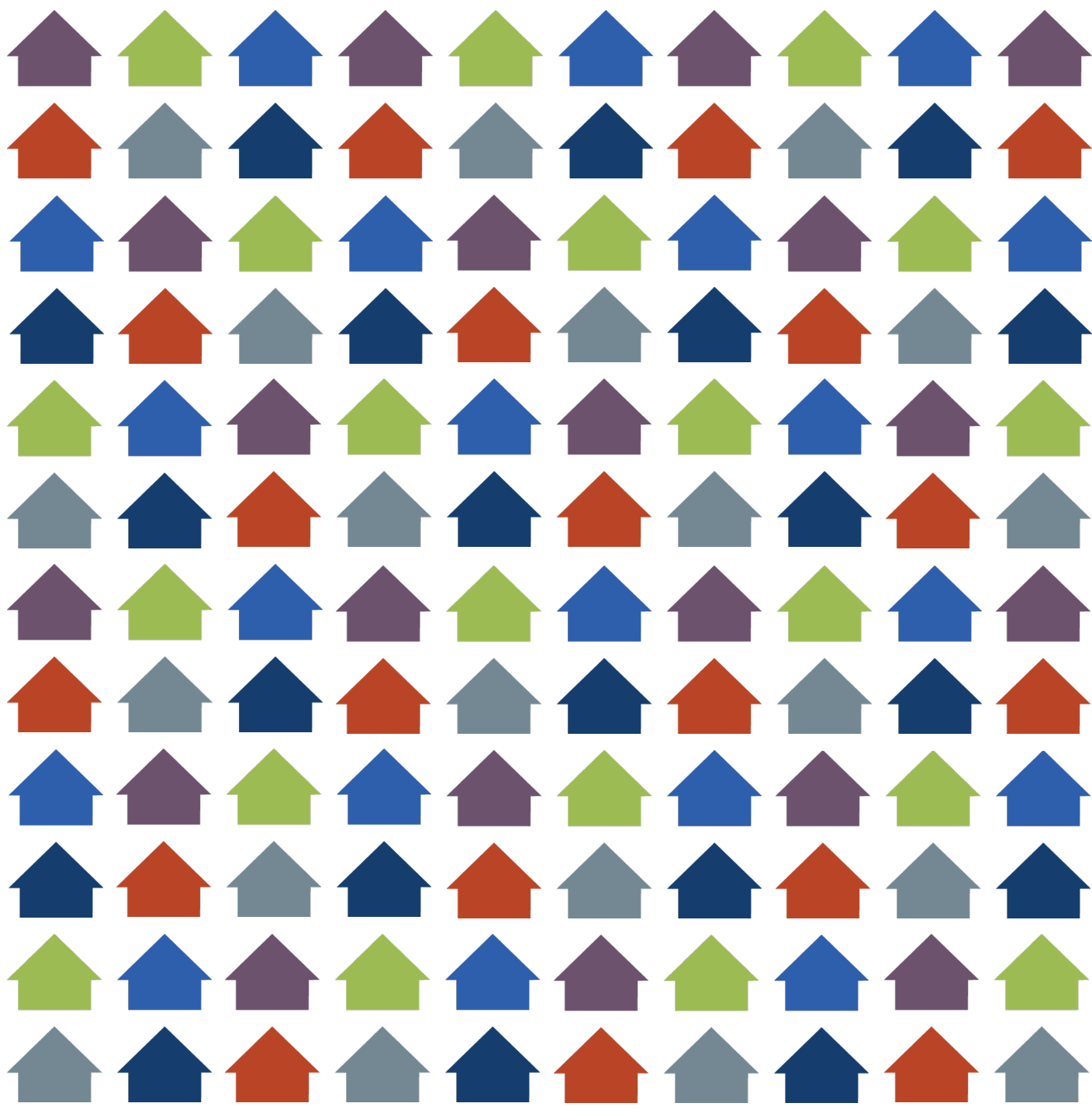
Email: gabrielle@thn.org



Thank you!

Strategies For Change

thn.org



Preparing for Federal Funding to Address Homelessness

Strategies For Change

thn.org

Agenda

- Primary Federal Housing Interventions
- Considerations for Pursuing Federal Funds
- Recommended Prerequisites

Primary Housing Interventions

- **Rapid Rehousing (RRH)**
 - Short to medium term housing subsidy (<24mo) and wraparound services
- **Permanent Supportive Housing (PSH)**
 - Non time-limited housing subsidy and wraparound services
- **Joint Transitional Housing (TH) & Rapid Rehousing**
 - Combines TH & RRH Components into single project, where participants can benefit from one or both components
- **Homeless Prevention (HP)**
 - A general term for an intervention intended to prevent homelessness by keeping people in their homes



Considerations

Capacity of local Housing Crisis Response System

- Local Homeless Coalition

- Coordinated Entry System

- Point In Time Count/Housing Inventory Count

- Availability of key change agents within the community to drive streamlined response

Capacity of Applicants

- Availability of resources that can be leveraged as match – 25%-100% match

- Compliance with federal regulations (2 CFR 200 & others)

- Do you use HMIS or a Comparable Database? How do you tell your organization's story?

- Administrative Capacity/ How quickly and effectively an organization can reasonably scale

- Federal grants operate on a reimbursement basis

- Unfunded Requirements (CE, PIT, HIC, Closeout)



Recommended Prerequisites

- Gather Data about the problem a community is hoping to solve
 - Conducting a Point In Time Count (PIT)
 - Robust Inventory Assessment with the Housing Inventory Count (HIC)
- Build community support and buy-in for advanced strategies
 - Establish/fine-tune the Local Homeless Coalition
 - Insure broad stakeholder base
 - buy in from local change agents and community leaders
- Contact THN for support, we have experts on staff, who can help you design a project that has the greatest likelihood for success!
- Be patient!
 - The Federal award process takes ages. It's not uncommon to see awards made in a fiscal year take 12-15 months to start



A decorative border of colorful house icons surrounds the central text. The houses are in various colors including purple, green, blue, red, and grey, arranged in a grid-like pattern.

Contact Information

Jim Ward

Director of Planning

Email: jim@thn.org

Phone: (512) 861-2165

Hope Rodgers, LMSW

CoC Performance Manager

Email: hope@thn.org

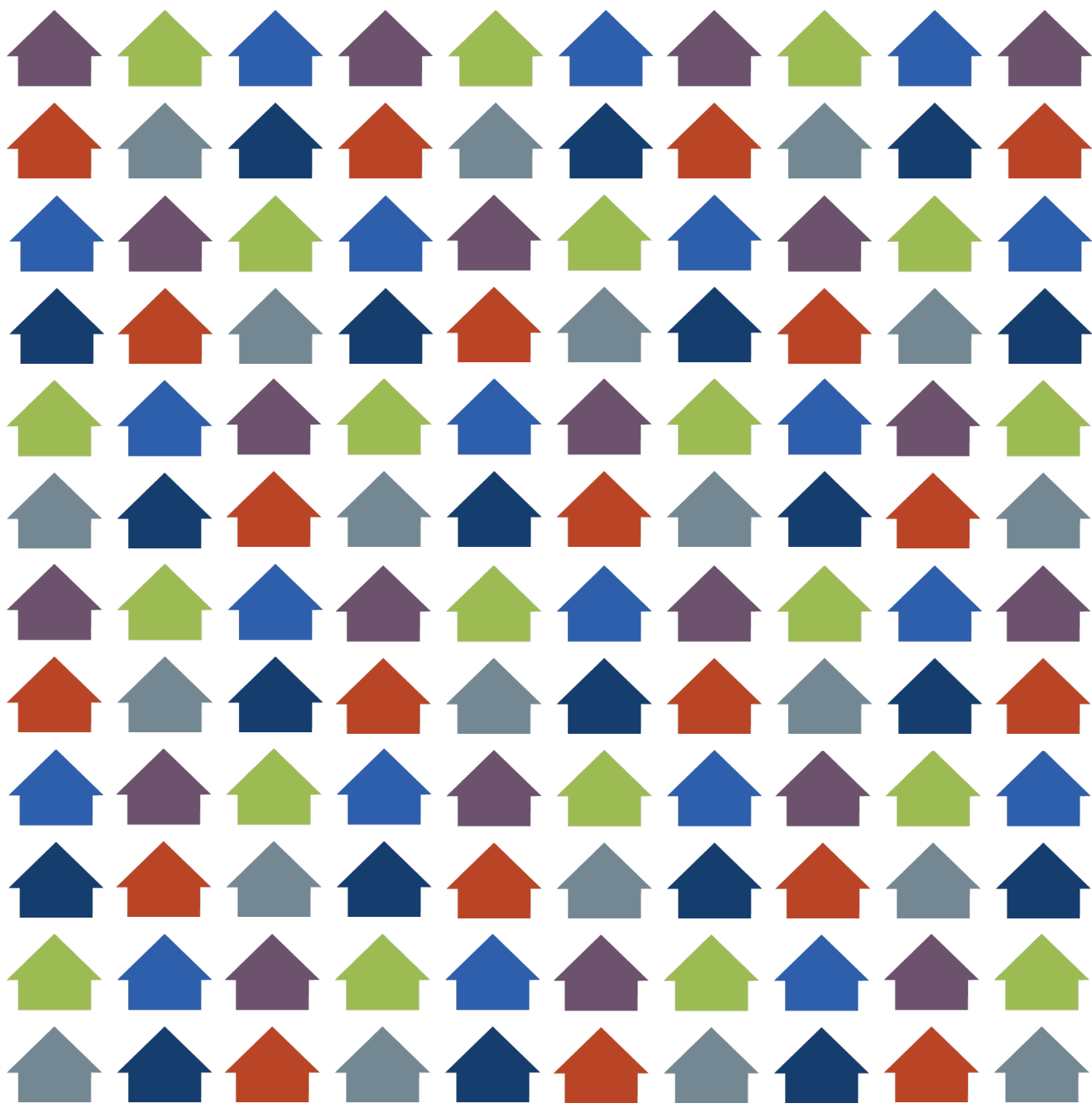
Phone: (512) 861-2219



Thank you!

Strategies For Change

thn.org



TX BoS CoC Staff

Strategies For Change

thn.org

Texas Homeless Network Staff



Eric Samuels
President and
CEO



Joanna Clark
VISTA Project
Assistant



Jen Beardsley
Local Homeless
Coalition Coordinator



Kraig Blaize-Fiero
CoC Programs
Coordinator



Paula Dewey
Database
Coordinator



Cosme Dominguez
Data and
Policy Analyst



Allie Edmundson
Emergency Housing
Voucher Manager



Aubrey Fetzer
HMIS Data Analyst



Samantha Foss
Director of Development
and Communications



Gabrielle Llamas
Training
Coordinator



Helen Garcia
EHV Referral
Coordinator



Brian Goodner
Chief Financial
Officer



Kyra Henderson
Director of Systems
Change



Margaret Hill
Governance
Coordinator



Jordan Hulin
Systems Change
Coordinator



Lindsay LaGrange
Director of
Data



Deanne Locke
Accounting and HR
Coordinator



Katie Martinez
Systems Change
Manager

Texas Homeless Network Staff



Jalisa McDuffy
EHV
Coordinator



Axton Nichols
CoC Performance
Coordinator



Ava Paredes
Data
Coordinator



Hope Rodgers
CoC Performance
Manager



Dominique Sam
HMIS Support
Specialist



Billy Streu
EHV Service
Coordinator



Mary Stahlke
Director of
Engagement



Anja Taylor
THDSN Project
Manager



Jim Ward
Director of
Planning



Shamika Williams
EHV Coordinator



Kristin Zakoor
Chief Operating
Officer



Pam Cavazos
Coordinated Entry
Lead



Katie Good
Coordinated Entry
Lead



Jessica Martinez
EHV Coordinator



Lynn Luther
HMIS Research and
Development VISTA



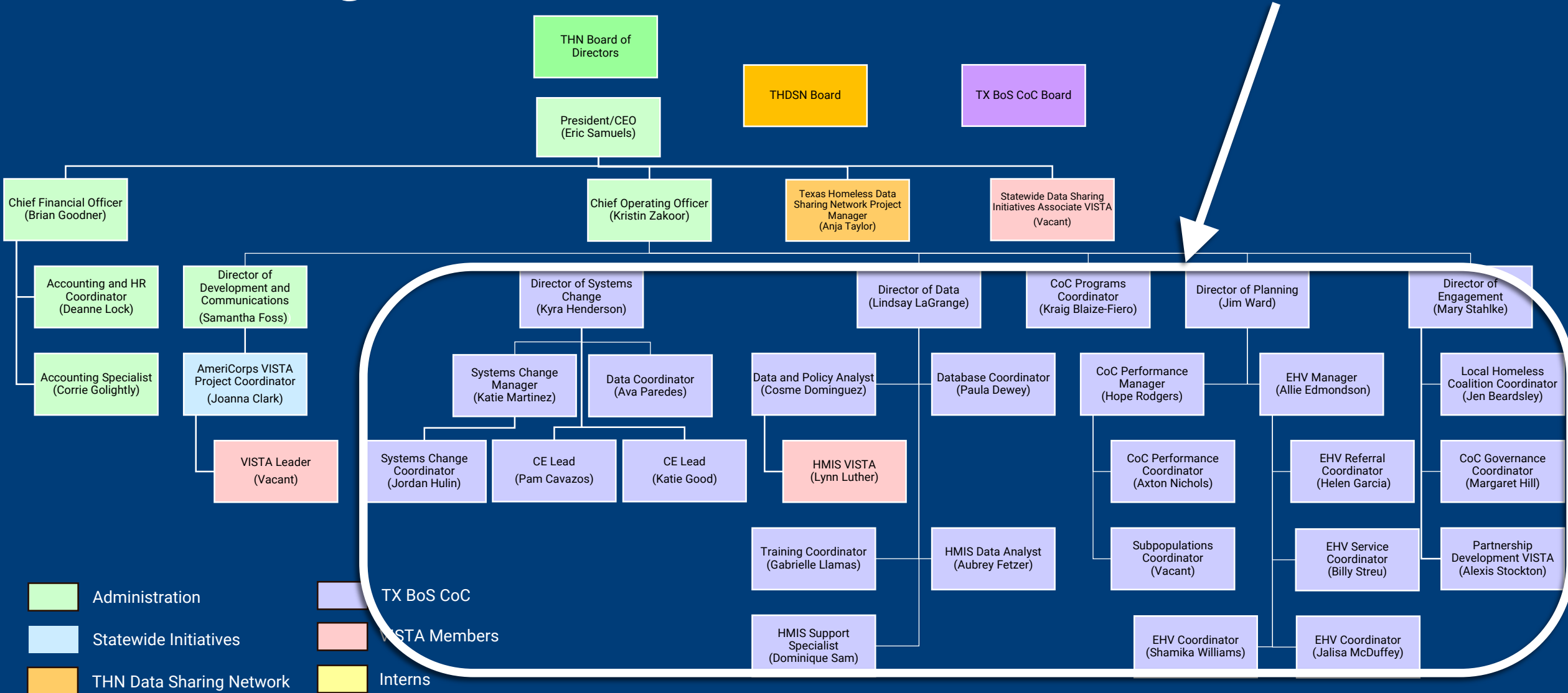
Alexis Stockton
Partnership
Development VISTA



Corrie Golightly
Accounting Specialist

THN Org Chart

TX BoS CoC Staff



TX BoS CoC Staff Teams

- Planning Team
 - General Questions: txboscoc@thn.org
- Data Team
 - Homeless Management Information System: hmis@thn.org
- Engagement Team
 - Local Homeless Coalitions: lhc@thn.org
 - General Questions: engagement@thn.org
- Systems Change Team
 - General Questions: txboscoc@thn.org



Contact Information

Margaret Hill
Governance Coordinator

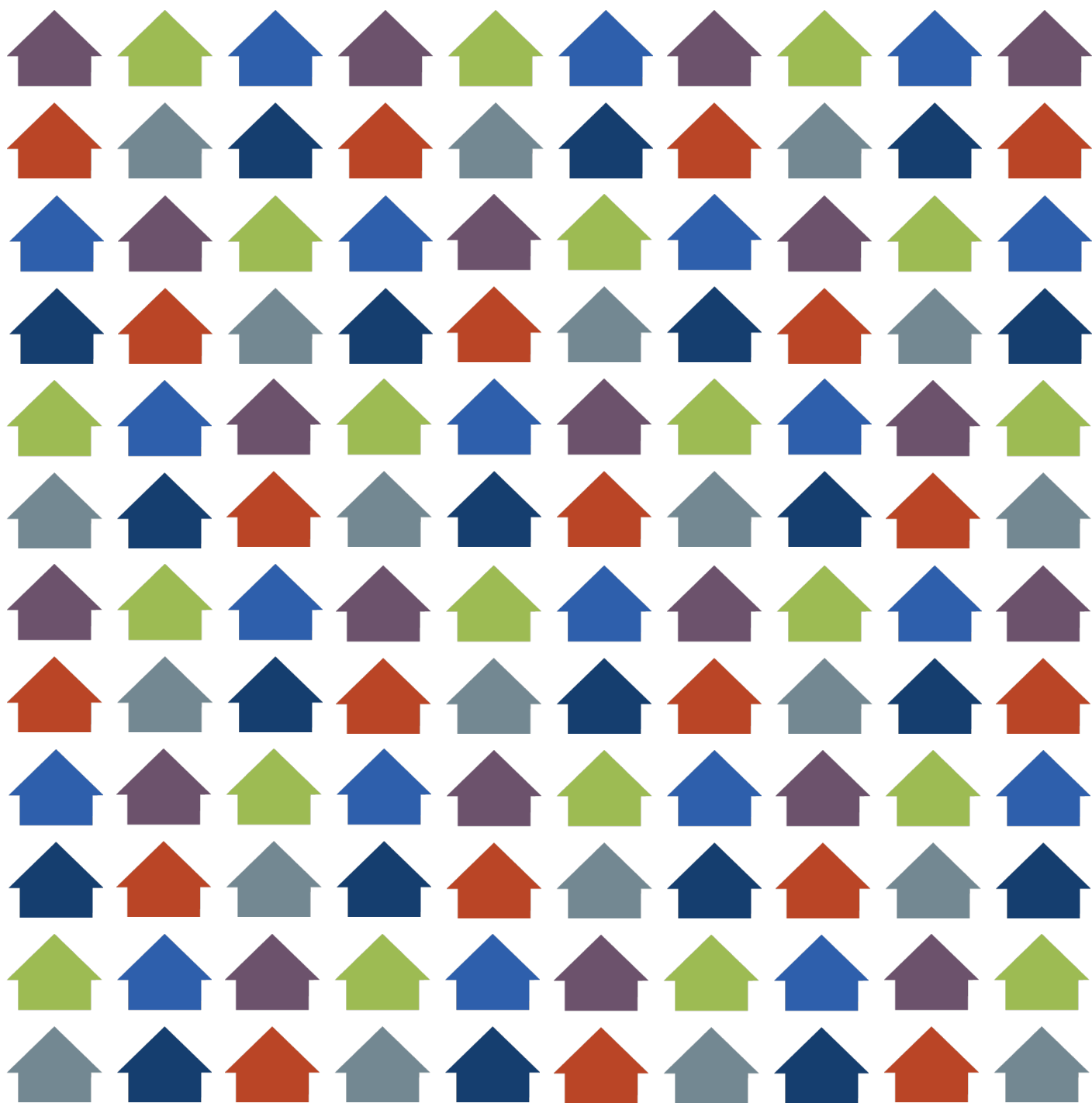
Email: margaret@thn.org
Phone: (512) 861-2181



Thank you!

Strategies For Change

thn.org



Get Involved

Strategies For Change

thn.org

Become a CoC Member

- Anyone who works or lives in the CoC's geographic area, and all housing and homeless services projects in the CoC's geographic area, are considered to be members of the CoC.
- There are no membership dues or requirements to become a member.
- The CoC has an open invitation process, so people may join at any time.

Note: CoC General Membership is different from THN Membership. While anyone who lives or works in the TX BoS CoC is considered a General Member of the CoC, THN membership requires a separate sign-up and donation process. Learn more about [THN membership here](#).

Participate in the CoC

- On the CoC Level
 - [CoC Board](#)
 - [CoC Committees](#)
 - Give comments on policies on the [public comment portal](#)
 - View trainings on the [TX BoS CoC's You Tube channel](#)
- On the Local Level
 - [Local Homeless Coalitions \(LHCs\)](#)
- Through THN
 - [Advocacy](#)
 - [Texas Conference on Ending Homelessness](#)

Stay Informed

- [CoC General Membership Meetings](#)
- TX BoS CoC News (e-newsletter) -- [subscribe](#)
- THN Website – www.thn.org
- News on [TX BoS CoC section of THN's website](#)
- Social Media:



A decorative border of colorful house icons surrounds the central text. The houses are in various colors including purple, green, blue, red, and grey, arranged in a grid-like pattern.

Contact Information

Mary Stahlke
Director of Engagement
for the TX BoS CoC

Email: mary@thn.org
Phone: (512) 861-2180

*Engaging members in the work
of the TX BoS CoC*



Thank you!

Strategies For Change

thn.org

WELCOME TO
Continuum of Care
Program

Continuum
NEXT EXIT



CoC
Responsibilities
and Duties
NEXT EXIT



CoC Program
Grant Uses and
Requirements
NEXT EXIT



Continuum of Care
Annual Application
Compiling, ranking, and submitting the annual CoC application



Continuum of Care 2.0

Continuum of Care
Program Roadmap

Thank you for being here!

Please fill out the
post-meeting
survey to let us
know how we did!



*Thank
You!*

Question and Answers

