

Texas Balance of State Continuum of Care General Membership Meeting

April 29, 2026

Strategies For Change

thn.org

Welcome and Agenda

- CoC Modernization
- CoC Regional Network Concept
- 2026 CoC Action Plan
- HUD Submissions
- Coordinated Entry Assessment Redesign
- Member Input and Open Discussion
- Texas Conference on Ending Homelessness



TX BoS CoC

- The Texas Balance of State Continuum of Care (TX BoS CoC) is a group of people in a specific geographic area that work together to create a housing crisis response system.
- Mission: The TX BoS CoC strengthens collaborative systems and coordinates partnerships that prevent and end homelessness through community-driven strategies, shared resources, and collective action across Texas.

Texas Homeless Network (THN)

- Texas Homeless Network (THN) serves as the Collaborative Applicant, Homeless Management Information System (HMIS) Lead Agency, and Coordinated Entry (CE) Lead Agency for the TX BoS CoC and provides staff support to the CoC.

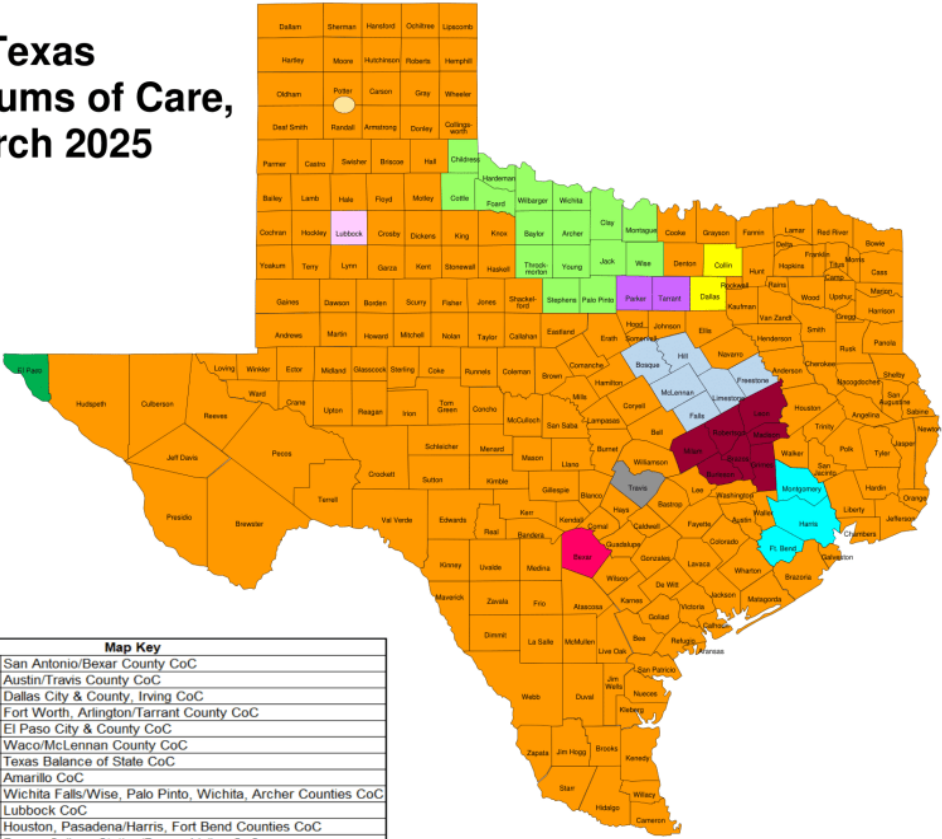
CoC General Membership

- Anyone who lives and/or works in the TX BoS CoC's geographic area is considered a "general member" of the CoC.

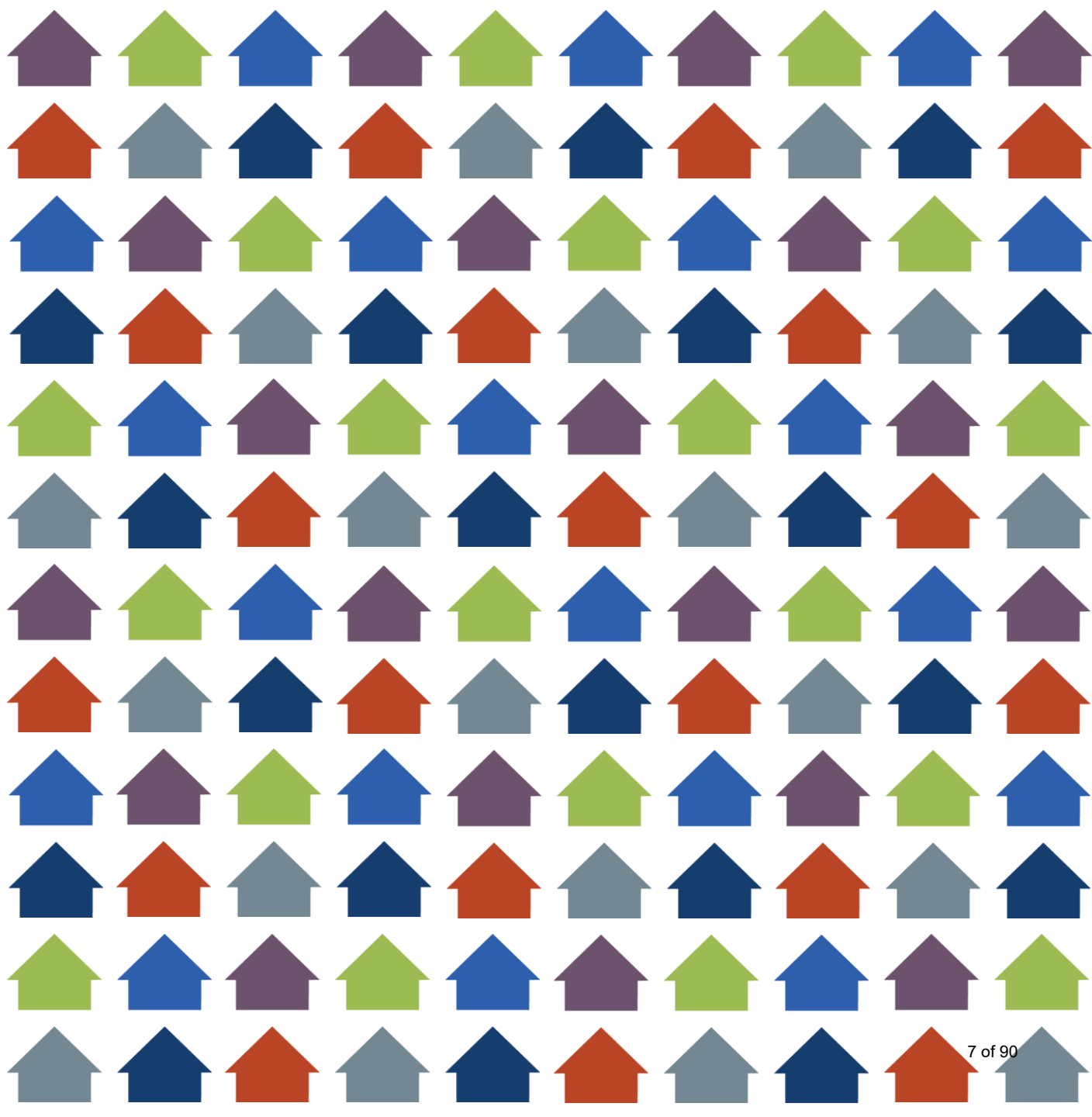
Learn more at

<https://www.thn.org/texas-balance-state-continuum-care/>

Texas Continuums of Care, March 2025



Map Key	
TX-500	San Antonio/Bexar County CoC
TX-503	Austin/Travis County CoC
TX-600	Dallas City & County, Irving CoC
TX-601	Fort Worth, Arlington/Tarrant County CoC
TX-603	El Paso City & County CoC
TX-604	Waco/McLennan County CoC
TX-607	Texas Balance of State CoC
TX-611	Amarillo CoC
TX-624	Wichita Falls/Wise, Palo Pinto, Wichita, Archer Counties CoC
TX-625	Lubbock CoC
TX-700	Houston, Pasadena/Harris, Fort Bend Counties CoC
TX-701	Bryan, College Station/Brazos Valley CoC



Texas Balance of State CoC Modernization Updates

April 29, 2026
Spring CoC General Membership
Meeting

Strategies For Change

thn.org

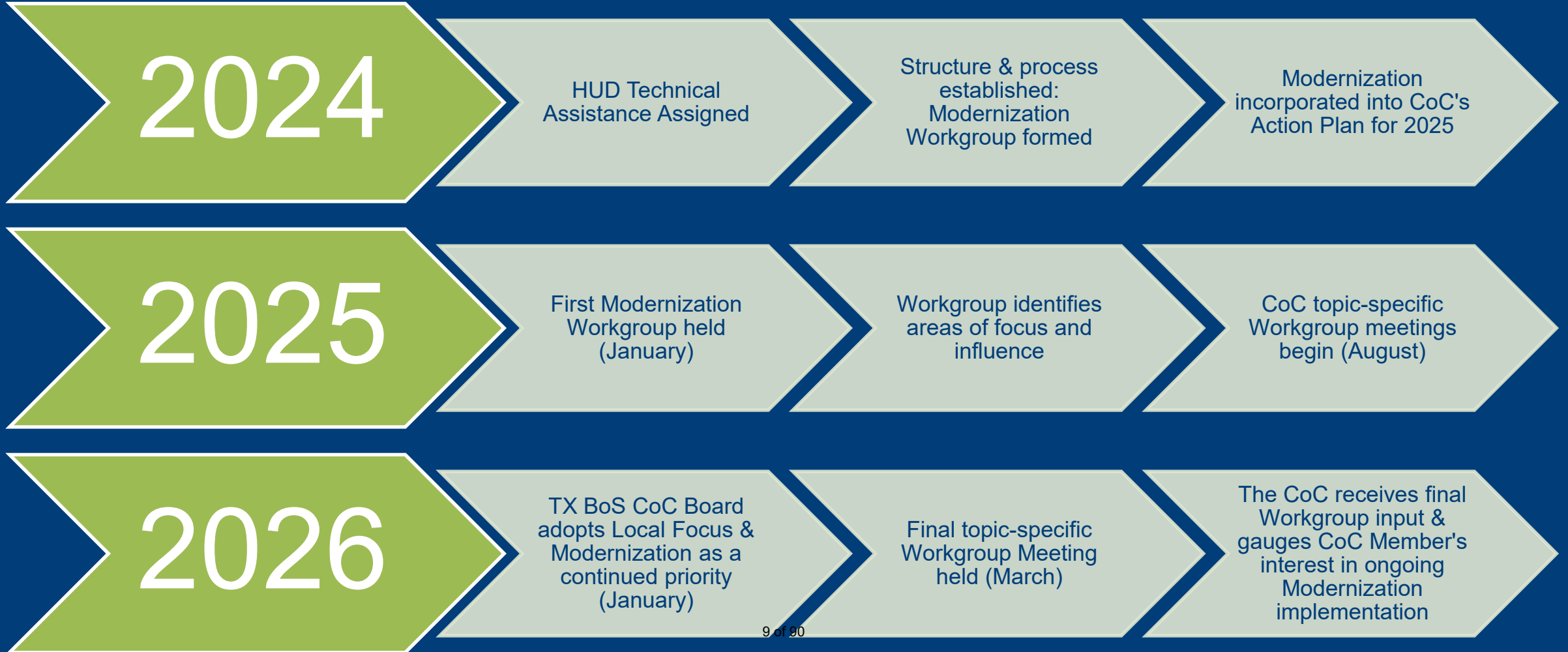
What is Modernization?

The purpose of CoC Modernization is to enhance the way the TX BoS CoC is structured and provide support to local communities to achieve better outcomes for people experiencing homelessness.

Modernization is an exploration and implementation of options and strategies to:

- Better support local communities
- Improve outcomes for people experiencing homelessness
- Amplify work done at the local level
- Build more robust communication processes

Background & Key Events



Modernization Workgroup: Impact & Influence

- Shaped an updated Mission Statement for the TX BoS CoC
- Informed development of CoC & Local Level Data Portfolios Visualization Tools
- Requested most needed local training topics
- Advocated for tailored local strategies applicable to a range of Housing Crisis Response System designs
- In-person Point-In-Time Count training and support
- Local Homeless Coalition (LHC) peer-sharing & improved accessibility of LHC materials
- Influenced overall vision and focus areas of the CoC for 2026

TX BoS CoC Updated Mission Statement

The TX BoS CoC strengthens collaborative systems and coordinates partnerships that prevent and end homelessness through community-driven strategies, shared resources, and collective action across Texas.

2026 Person-Centered Case Management Series

Texas Homeless Network has contracted with C4 Innovations to conduct an **8-part, interactive, virtual training series** on CoC Member's most requested topics. Series begins Friday, May 1st from 10:00–11:30, with sessions generally occurring every other Friday.

Registration Process:

1. Navigate to: <https://c4innovates.skilljar.com/person-centered-case-management-summer-2026-texas-homeless-network?pc=thncmsum26>
2. Select the purple "Purchase" button - don't worry, you won't be charged
3. Select Sign In if you have taken a course with C4 before or select Sign Up if you are new to our system
4. You should then be directed to the course learning page



Free CEUs
available!

Modernization: The Journey Ahead



Phase Three: Where We're Going

All CoC operations developed through the lens of Modernization; *Modernization becomes a Practice rather than a Project*; A more person-centered CoC is achieved

Phase Two: Where We Are

Integration of recommendations and findings; short & long-term goal planning; Modernization efforts interwoven throughout 2026 CoC Action Plan

Phase One: Where We've Been

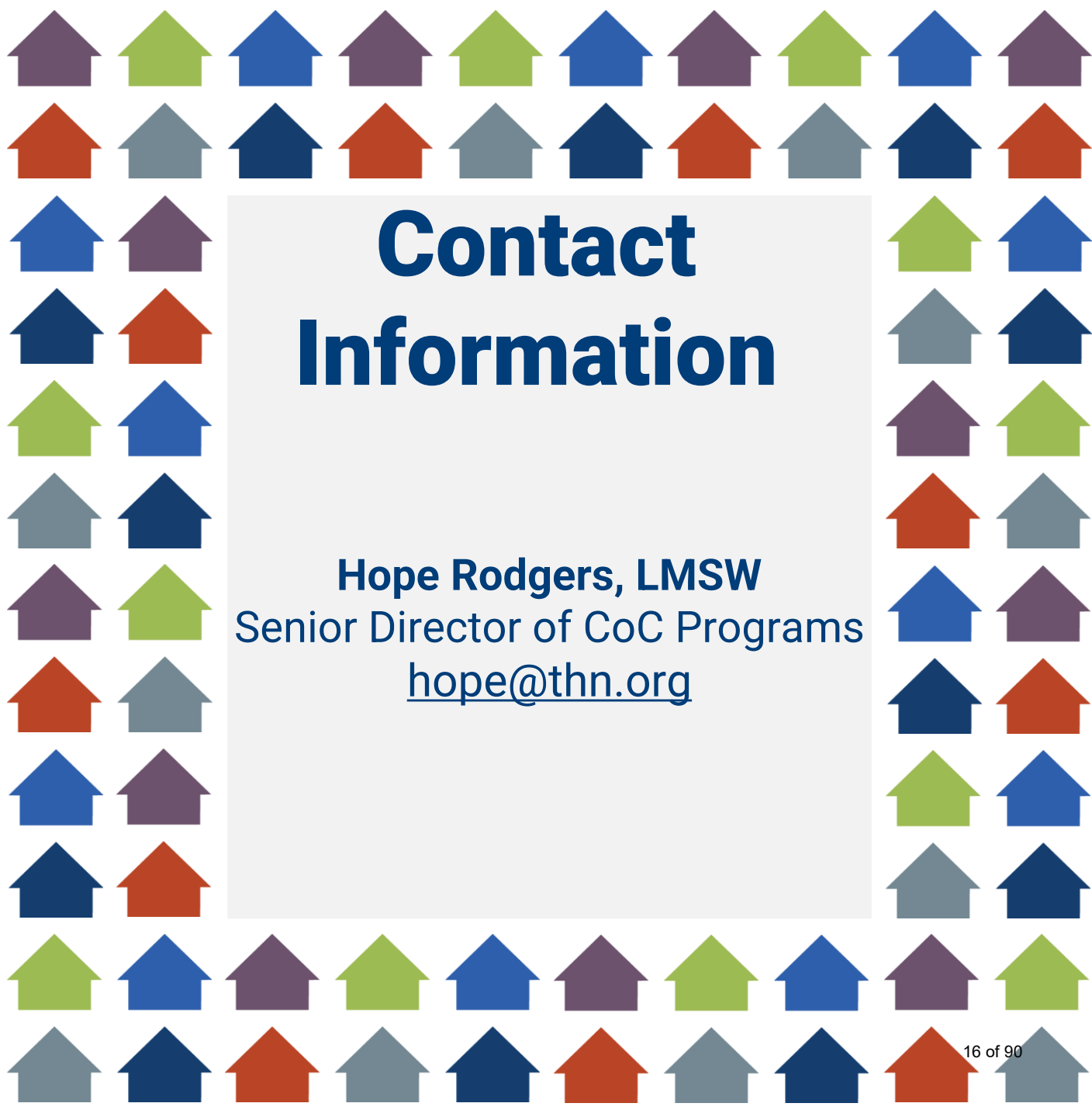
Modernization Scope of Work created; Workgroup formation; targeted & focused feedback opportunities

How to Stay Informed & Engaged

- Look for Modernization updates in the Texas Homeless Network monthly newsletter
 - Sign Up for our Newsletter
here: https://secure.everyaction.com/tJ_cigTdjKWiZ9-oz5ZiDg2)
- Check back for Quarterly CoC Action Plan Progress Reports
 - To be posted here: <https://www.thn.org/texas-balance-state-continuum-care/governance/#governance>







Contact Information

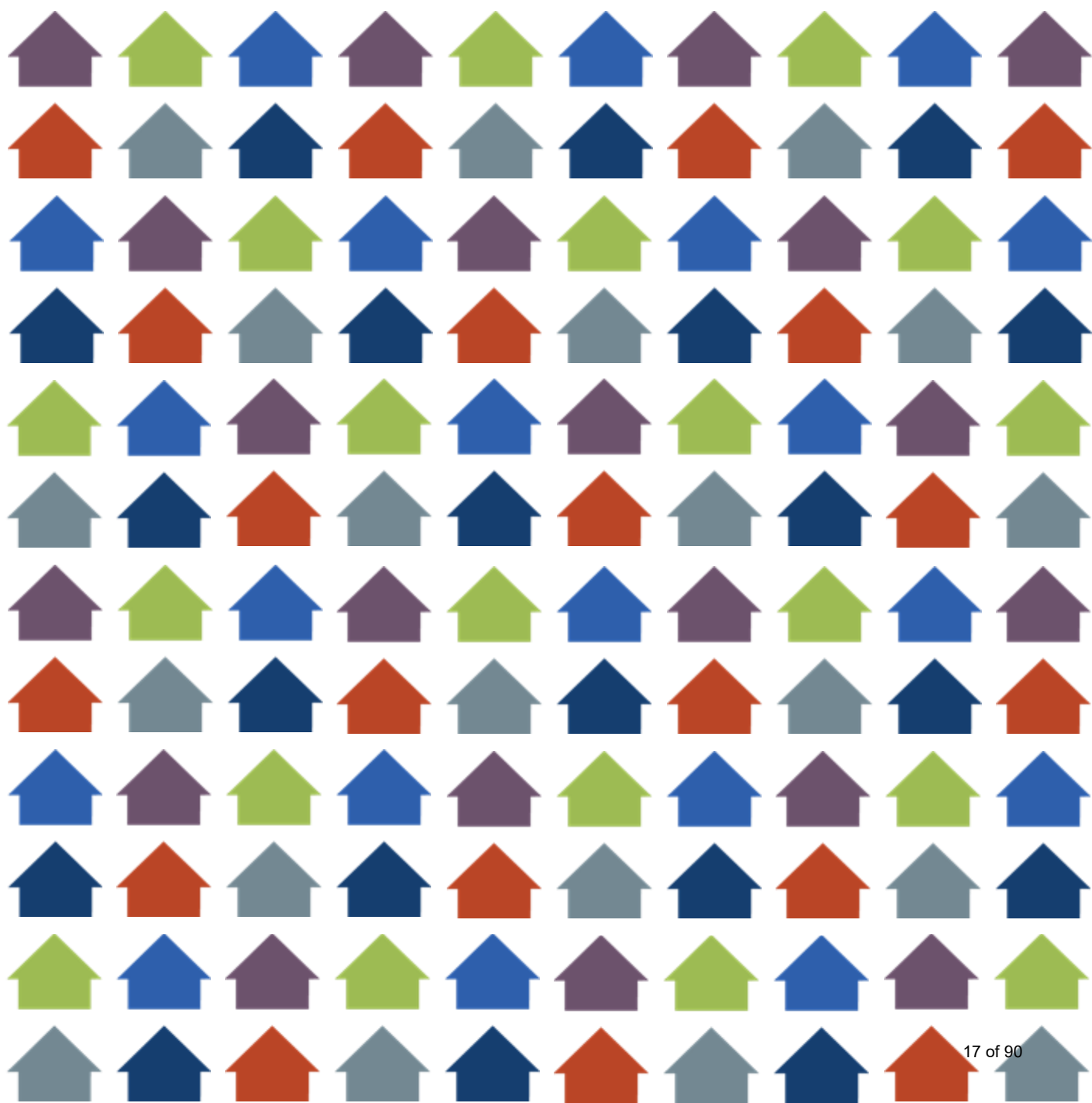
Hope Rodgers, LMSW
Senior Director of CoC Programs
hope@thn.org



Thank you!

Strategies For Change

thn.org



TX BoS CoC Regional Network

Strategies For Change

thn.org



Purpose & Spirit of Regional Network



Designed to strengthen – not replace – what's already working in communities.

Built to be flexible, strengths-based, and locally driven.

Supports planning, coordination, and disaster readiness.

Builds regional partnerships that increase capacity, honor local leadership, and enhance what's already working.

NOT a restructuring or split of the CoC.

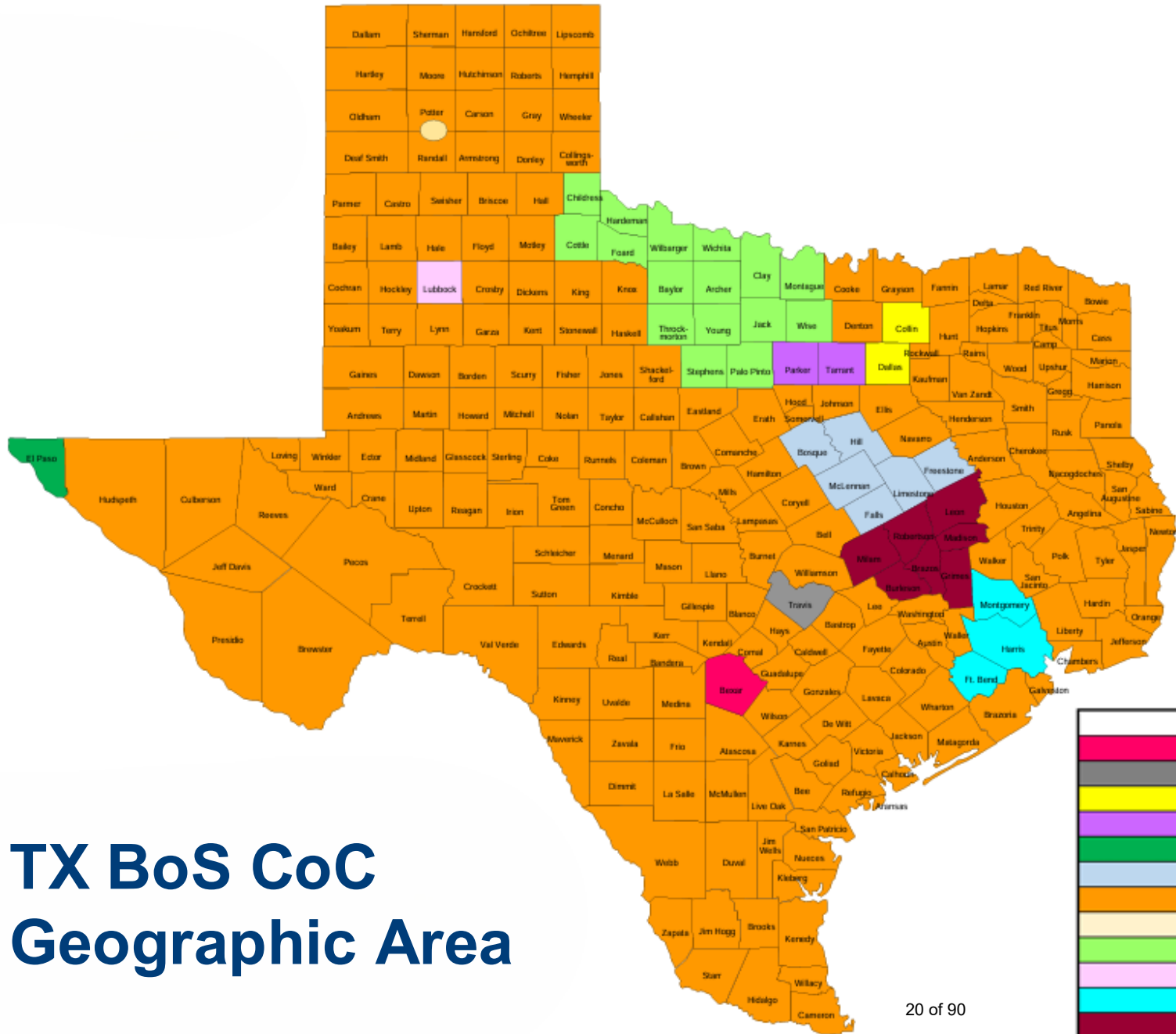
NOT a mandate or requirement for communities.

Why a Regional Network?

TX BoS is huge! This network is intended to:

- Enhance coordination across 214 counties through Coordination Anchors
- Align with existing service structures and emergency management districts to streamline disaster coordination and regional engagement
- Serve as a strategic lens for planning, not a mandate or structural change





TX BoS CoC Geographic Area

Map Key		
	TX-500	San Antonio/Bexar County CoC
	TX-503	Austin/Travis County CoC
	TX-600	Dallas City & County, Irving CoC
	TX-601	Fort Worth, Arlington/Tarrant County CoC
	TX-603	El Paso City & County CoC
	TX-604	Waco/McLennan County CoC
	TX-607	Texas Balance of State CoC
	TX-611	Amarillo CoC
	TX-624	Wichita Falls/Wise, Palo Pinto, Wichita, Archer Counties CoC
	TX-625	Lubbock CoC
	TX-700	Houston, Pasadena/Harris, Fort Bend Counties CoC
	TX-701	Bryan, College Station/Brazos Valley CoC

What We Hope to Strengthen

Improved access to TDEM and COG partners for disaster planning and response coordination

Strategic planning across THN teams and LHCs

Case conferencing accessibility and consistency

Regional partnerships with COGs and TDEM

Capacity for funding and resource allocation

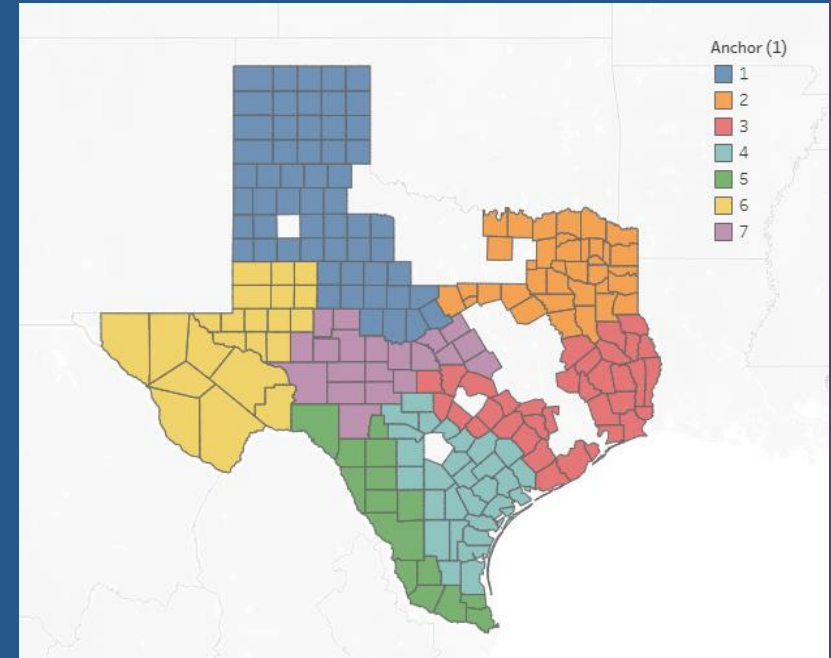
Enhanced coordination of Point-In-Time Count, Coordinated Entry, LHCs, and SOAR

Visualizing Regional Anchors

This map is our shared starting point for disaster readiness across the BoS. Other uses remain optional and community-driven.

Each Anchor now includes regional partner contacts.

[BoS Regional Network Map](#)



Structured Flexibility

Structure (What stays consistent)

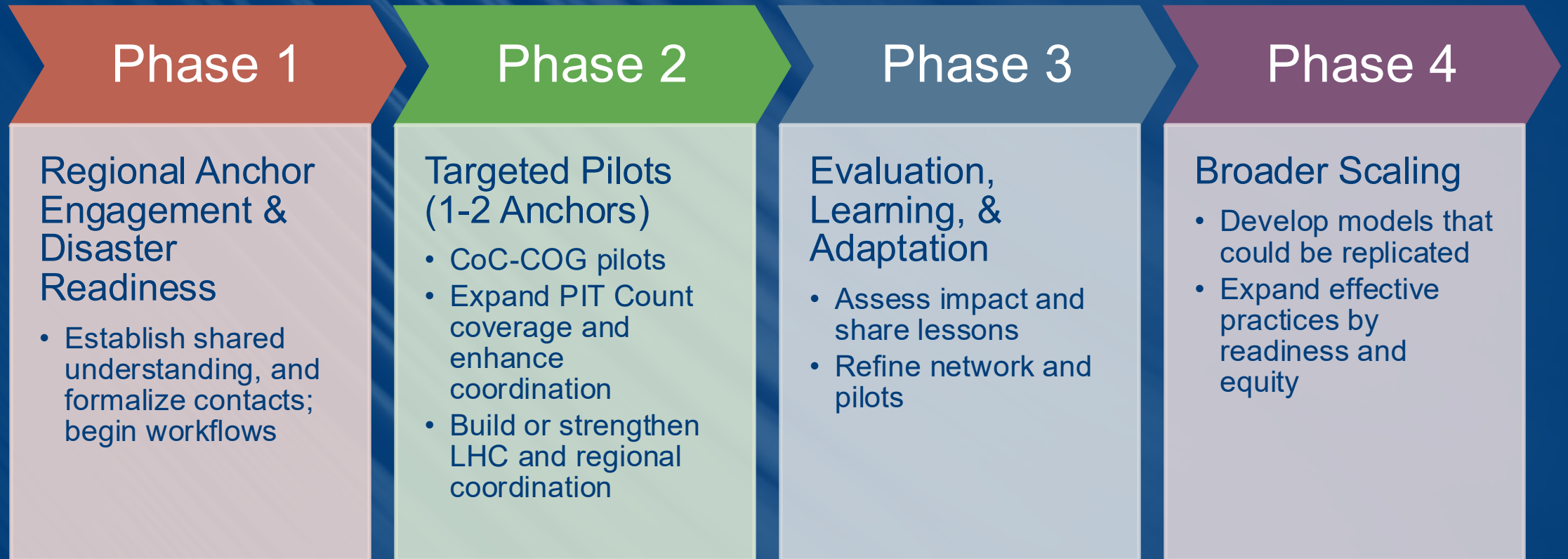
- Shared planning areas (Regional Anchors) for disaster readiness
- A common map we can all plan from
- THN coordinates support across regions based on needs and requests
- LHCs, CEPEs, and service areas stay intact

Flexibility (What stays local)

- Local processes don't change
- Participation is voluntary but encouraged to strengthen impact
- Communities may opt into multiple Anchors if helpful
- Communities can engage in ways that fit their capacity and context

Bottom Line: Flexible enough to honor local context. Structured enough to scale support and strengthen coordination.

Phased Strategy for Regional Anchor Partnerships



Increased Disaster Planning & Coordination

In a region impacted by a disaster (e.g., flooding or wildfire):

- Because the framework aligns with TDEM's district structure, CoC and community could quickly activate coordination with TDEM staff and existing VOADs.
- The CoC could share shelter availability, outreach needs, and unsheltered population data directly with TDEM staff already familiar with the region.
- This could lead to faster resource deployment, better inclusion of people experiencing homelessness in emergency response, and stronger recovery planning.

Potential Increased Support for Communities

As partnerships grow, this network may support:

- Starting or strengthening LHCs where helpful.
- Support for PIT Count logistics and outreach planning where local resources are few.
- Access to regional planning and training resources for any community.

In practice:

- THN has executed its first pilot MOU with Southeast Texas Regional Planning Commission.
- This pilot allows us to test how regional planning entities and CoC coordination can work together – especially around disaster readiness.
- This is a pilot, not a CoC-wide model.

Your Feedback Matters

We're seeking input on:

Do the proposed Regional Anchors feel logical and representative?

What opportunities or concerns are we not seeing yet?

What would make this network more supportive for your community?

As we continue using this tool, your input continues to shape how it evolves.

[Feedback Form](#)



Questions?



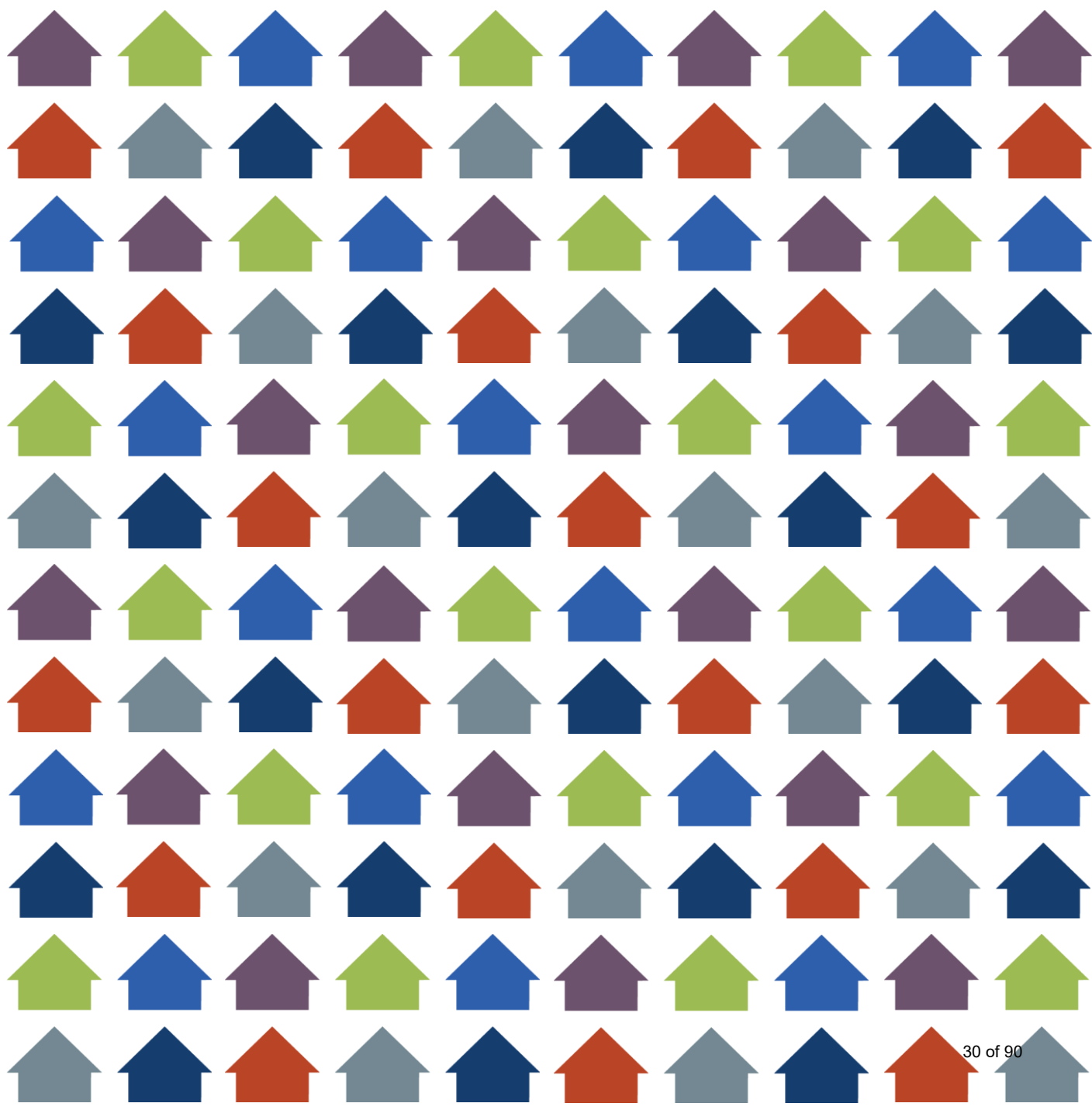
Billy Streu
Director of Planning
billy@thn.org



Thank you!

Strategies For Change

thn.org



Texas Balance of State CoC 2026 Action Plan

April 29, 2026
Spring CoC General Membership
Meeting

Strategies For Change

thn.org

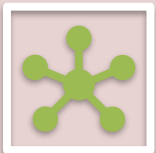
2026 CoC Priorities



Priority 1) Local Focus (CoC Modernization): Enhance support and build capacity on the local level



Priority 2) Service & Housing Outcomes: Partner with service providers to evaluate and improve programming, increase funding and capacity, and remove barriers for improved outcomes



Priority 3) Person-Centered Implementation: Support best practice through education, coordinated planning and person-centered implementation

Priority 1

Priority 1) Local Focus (CoC Modernization): Enhance support and build capacity on the local level

Priority 1 in Practice:
Local Homeless Coalition (LHC) Categorization & Prioritization:

TX BoS CoC Teams (Data, Systems Change, Engagement, and Planning) work together to develop an LHC Prioritization Plan

LHCs categorized based on implementation status and community context (ex: Foundational stage, Developing & Building stage, Sustaining/Enhancing stage)

CoC Teams select LHCs for tailored support based on Prioritization Plan

Priority 1) Local Focus (CoC Modernization): Enhance support and build capacity on the local level

Priority 1 in Practice:
Strategy Development

TX BoS CoC Teams develop a menu of strategies to advance the CoC's Priorities at the local level, tailored to each LHC category and in alignment with the CoC's structure

Priority 1) Local Focus (CoC Modernization): Enhance support and build capacity on the local level

Priority 1 in Practice:
Tailored LHC Coordination & Support

TX BoS CoC Teams begin working with prioritized LHCs to develop local action plans

Teams walk alongside LHCs to support implementation of plans, routinely assessing the CoC's capacity to decide when additional LHCs can be prioritized

Priority 2

**Priority 2) Service & Housing Outcomes:
Partner with service providers to evaluate and improve programming, increase funding and capacity, and remove barriers for improved outcomes**

**Priority 2 in Practice:
Data Visualization Tool Development & Refinement**

Data Team develops and refines local-level data visualization tools utilizing CoC Member input

TX BoS CoC Teams coordinate to develop recommendations on the use of data visualization tool(s) locally to improve programming

Tools & recommendations are shared broadly across the CoC via LHCs

**Priority 2) Service & Housing Outcomes:
Partner with service providers to evaluate and improve programming, increase funding and capacity, and remove barriers for improved outcomes**

**Priority 2 in Practice:
Peer Support and Training**

Planning Team develops and implements an annual training calendar (target audience: federally funded housing projects such as CoC, ESG or SSVF projects, and prospective CoC applicants)

Engagement, Systems Change, and Data Teams identify and arrange for additional training needs

Broad training support to CoC Members based on feedback collected through Modernization efforts

Priority 3

Priority 3) Person-Centered Implementation: Support best practice through education, coordinated planning and person-centered implementation

Priority 3 in Practice:

Develop New Coordinated Entry Processes and Piloting Plan

Systems Change Team continues to work with HUD TA and CoC Workgroup to guide the development of new CE Assessment & Prioritization processes and standards

Systems Change Team develops a strategy to select which CE Region(s) will Pilot the new processes before a broader implementation across the CoC

Priority 3) Person-Centered Implementation: Support best practice through education, coordinated planning and person-centered implementation

Priority 3 in Practice:

Community Education

Equip communities with the structure and supports they need to use PIT and HIC data as a tool for community education on housing gaps and realities of homelessness

Distribute a CoC Gaps Analysis outcomes report and recommendations on application of findings in local communities

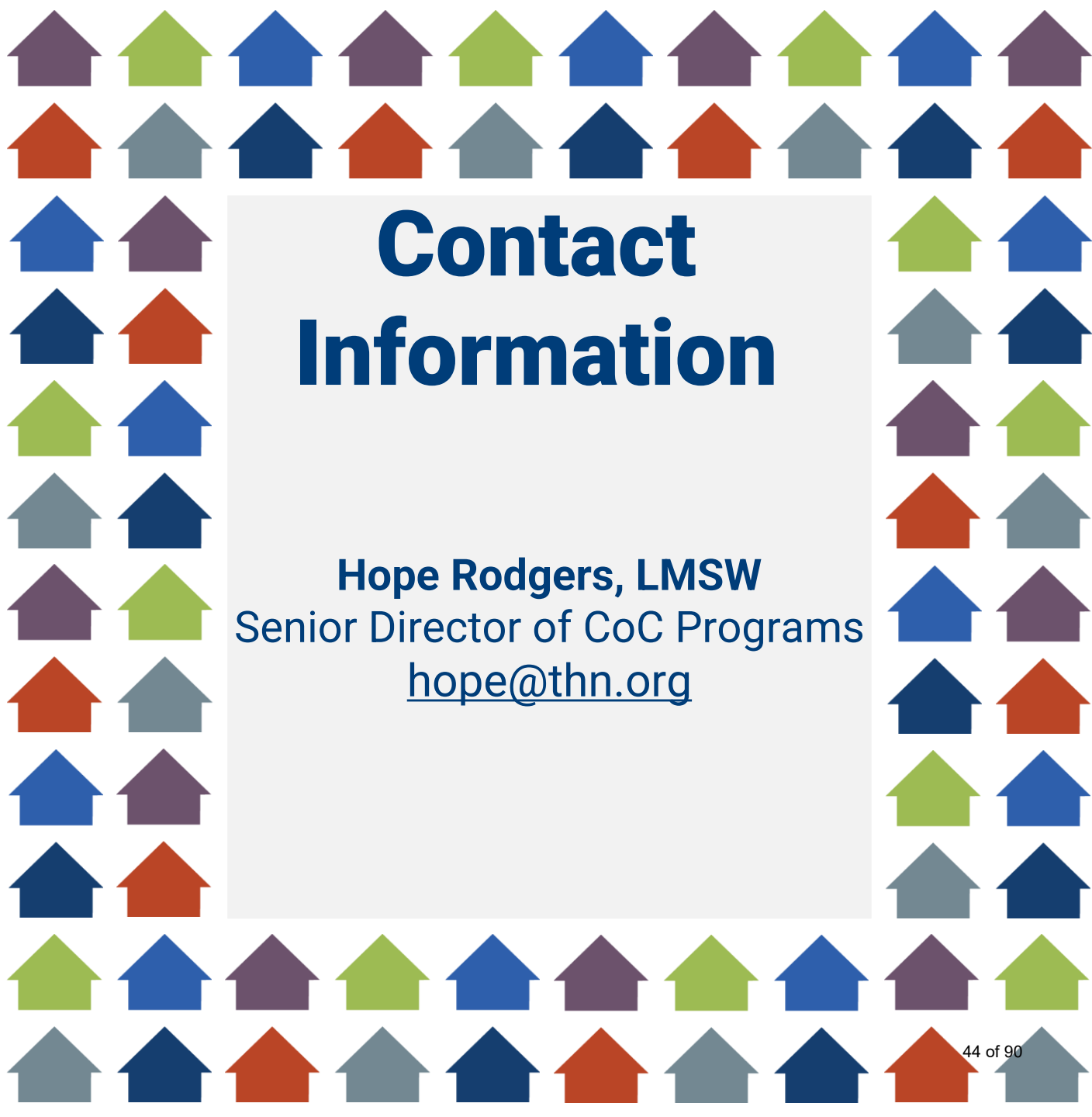
Priority 3) Person-Centered Implementation: Support best practice through education, coordinated planning and person-centered implementation

Priority 3 in Practice:
Centering Lived Expertise

TX BoS CoC Teams identify strategies to meaningfully engage persons with lived expertise in their respective areas (i.e. Coordinated Entry, HMIS/Data, LHC/local governance, PIT/HIC planning, funding coordination, etc) and include in LHC-focused strategy menu

Support the CoC's Lived Experience Committee to directly influence the activities in the CoC's Action Plan





Contact Information

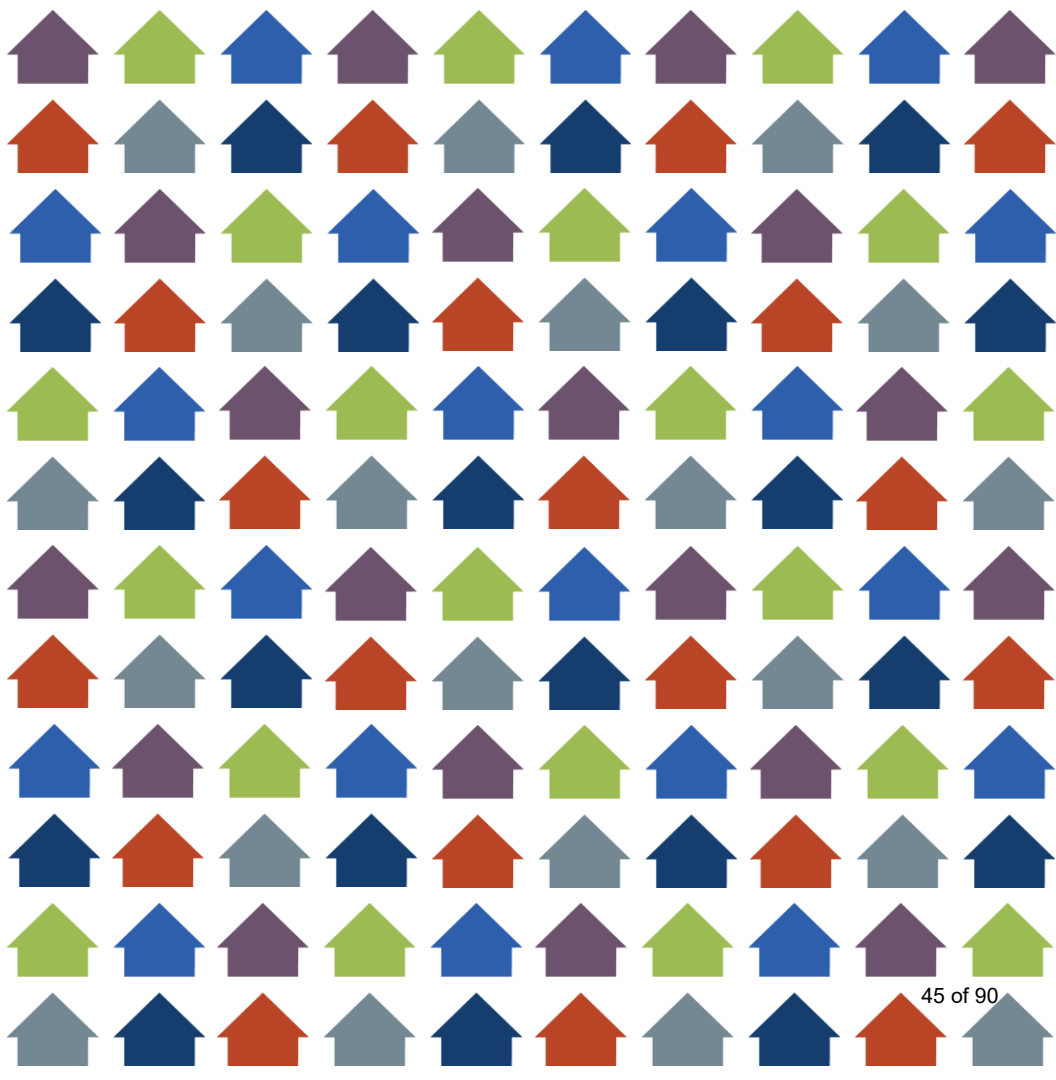
Hope Rodgers, LMSW
Senior Director of CoC Programs
hope@thn.org



Thank you!

Strategies For Change

thn.org



45 of 90



FY 2025 LSA & SPMs

Strategies For Change

thn.org

Longitudinal System Analysis, AHAR & Stella



Data Quality Flags

- Utilization
- Length of Stay
- HIC/PIT Comparisons
- NEW: Missing client data



Flags submitted

- FY 2022 – 110 flags
- FY 2023 – 102 flags
- FY 2024 – 82 flags
- FY 2025 – 57 flags!!!



System Performance Measures



What are System Performance Measures?



1. Length of time persons remain homeless

2. The extent to which persons who exit homelessness to permanent housing destinations return to homelessness

3. Number of homeless persons

4. Jobs and income growth for homeless persons in CoC Program-funded projects

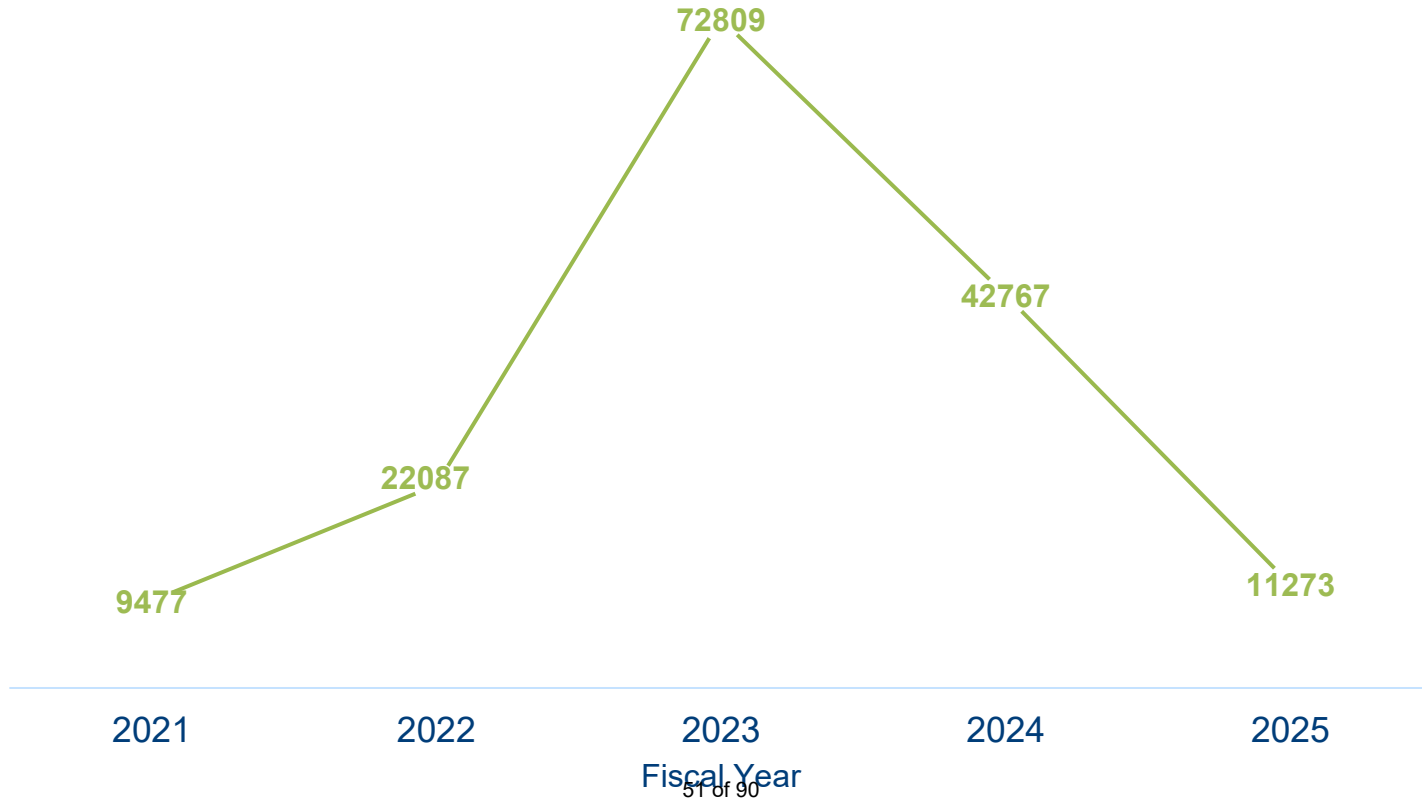
5. Number of persons who become homeless for the first time

6. Homelessness prevention and housing placement of persons defined by Category 3 of HUD's homeless definition in CoC Program-funded projects

7. Successful housing placement



CLIENT UNIVERSE

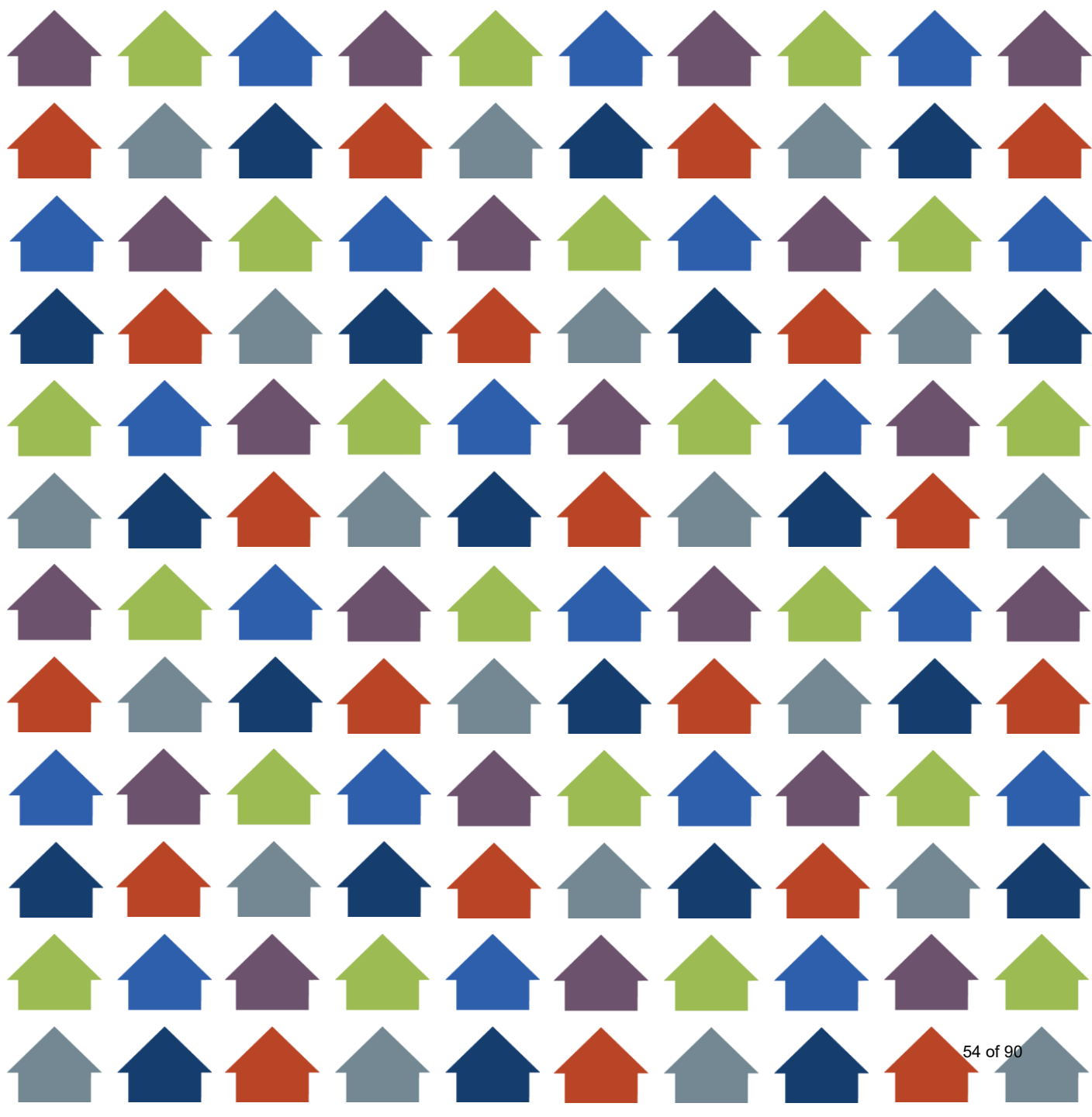


Texas Homeless Network
 System Performance Measures Summary - Year to Year Comparison
 FY 2024: October 1, 2023 - September 30, 2024 vs.
 FY 2025: October 1, 2024 - September 30, 2025

#	Measure Description	Desired Change	Year to Year % Change	System Trend
1a	Average Length of Time Persons Remain Homeless	↓	↑ 229%	Average number of days in shelters and transitional housing increased from 19 days in FY 2024 to 63 days in FY 2025.
2	Return to Homelessness (total returns in 2 years)	↓	↑ 58%	The percentage of persons who returned to homelessness increased from 6% in FY 2024 to 9.4% in FY 2025.
4.3	Change in total income for adult system stayers during reporting period	↑	↑ 15%	The percentage of adult stayers who increased their total income increased from 40% in FY 2024 to 47% in FY 2025.
4.6	Change in total income for adult system leavers during reporting period	↑	↑ 11%	The percentage of adult leavers who increased their total income increased from 31.6% in FY 2024 and 35.3% in FY 2025.
5.2	First Time Homeless (ES, TH, & PH with no prior HMIS enrollments)	↓	↓ 77%	The number of persons who became homeless for the first time decreased from 40,273 in FY 2024 to 9,288 in FY 2025.
7b.1	Successful Permanent Housing Placement (From ES, TH, and RRH)	↑ ^{52 of 90}	↑ 242%	The housing placement rate stayed the same with 7% in FY 2024 and 23% in FY 2025.

Questions





2026 PIT Results Presentation

Strategies For Change

thn.org

Winter PIT Date

January 22nd, 2026

Agenda

Module 2

Module 3

Module 4

Module 5

Wrap-Up



What is the Point-In-Time (PIT) Count?

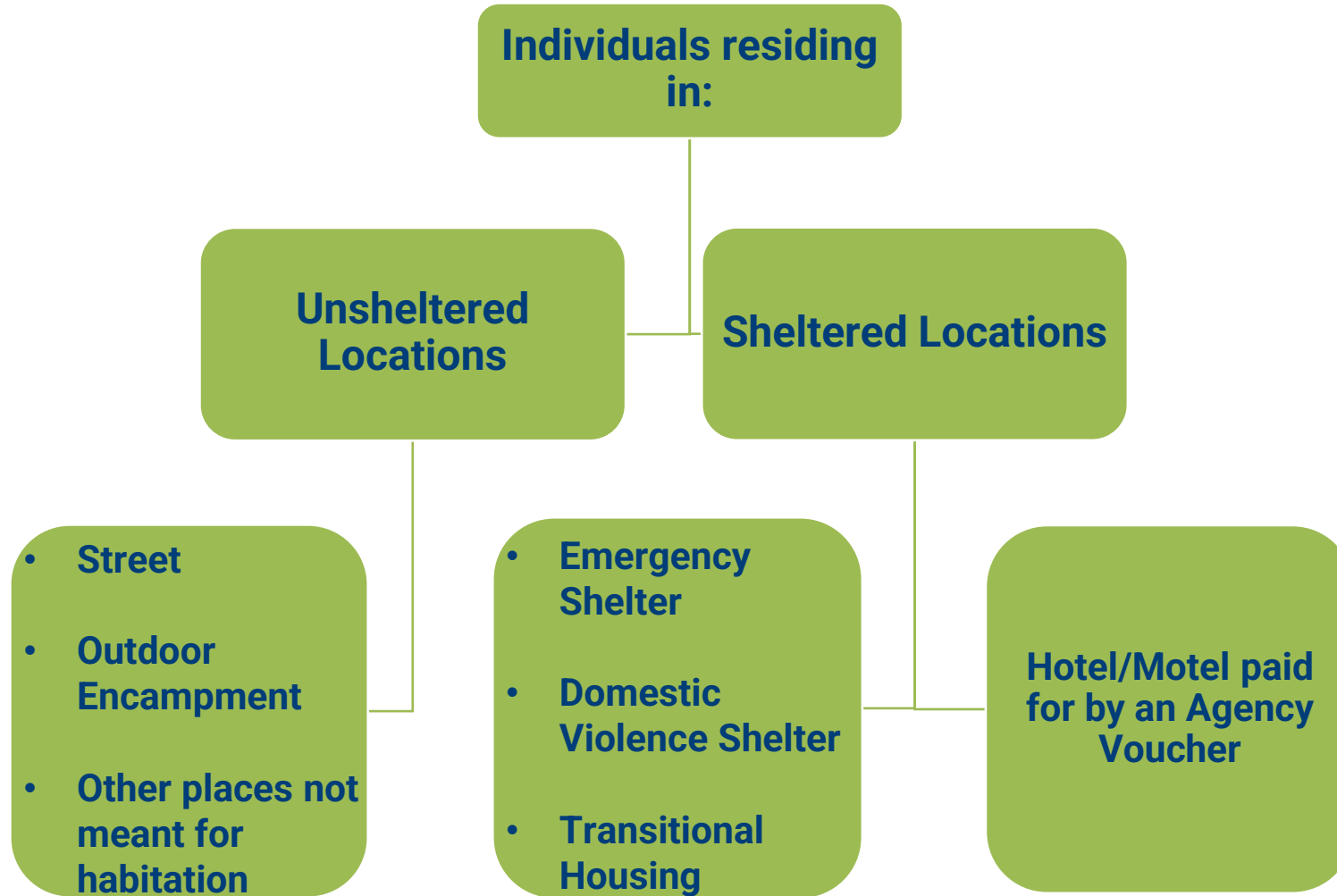
- How many people are currently experiencing homelessness in your community?
- How many of them are families, youth, or veterans?
- What do they report as their causes for homelessness?

The answers to these questions and more can be answered by point-in-time counts.

A point-in-time count is an unduplicated count on a single night of the people in a community who are experiencing homelessness



Who to Count



Methodology



What is a Non-Random Sample + Extrapolation Methodology?

- A non-random sample does not statistically represent the entire population, but if the non-random sample covers a large portion of the population or subpopulation believed to have similar characteristics (e.g., sheltered youth), extrapolation to derive estimates for the entire population or subpopulation is likely to be accurate.

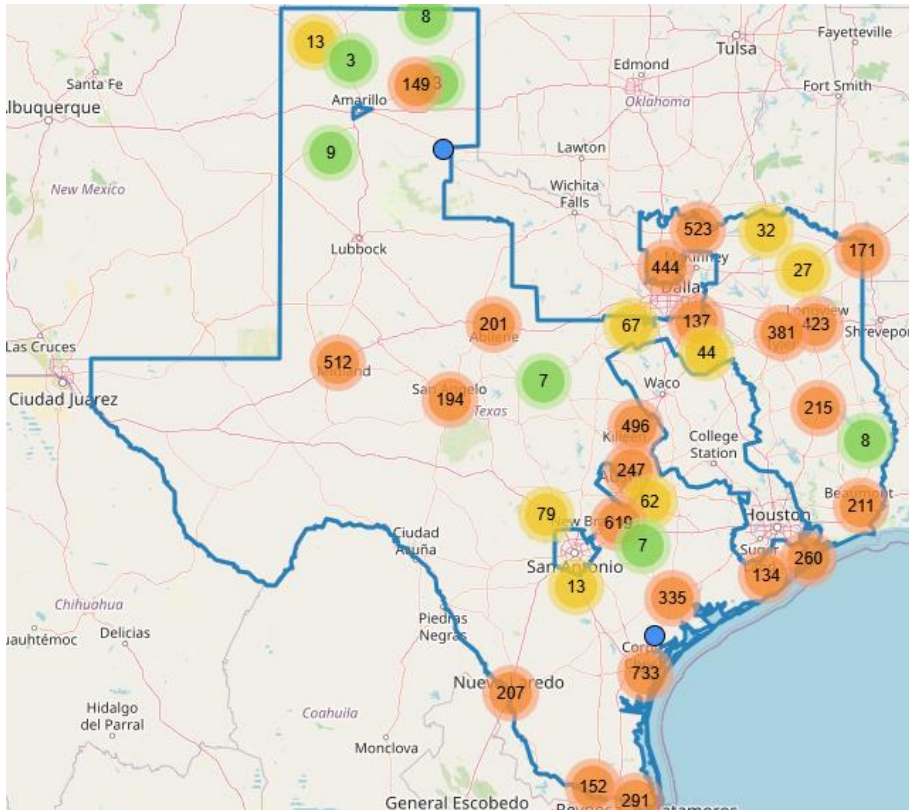
For the unsheltered count we also use a Service Based Count method:

- The service-based counting method is based on the understanding that while many homeless people choose not to stay in shelters, they may access other community facilities/services that offer food, amenities, and respite to the public.
- Service-based counts can extend beyond 1 day, since it is likely that homeless people will not access these services on a daily basis. Service based counts must not extend beyond 7 days after the CoC's designated count night.



Coverage Area

2026 PIT Regions



Texas Balance of State Region

Texas Continuums of Care, March 2025



Lubbock Disclaimer

Lubbock did not participate in the 2026 Texas BoS CoC Point-In-Time Count effort. Now that Lubbock has its own Continuum of Care, that community is now responsible for their own PIT count. This has led to a decrease in the BoS PIT count in both 2025 and 2026.



Clear Weather All Around

On the night of the PIT count there was significantly less severe weather in comparison to 2025. This led to higher turnout and engagement from volunteers across the state.



Other Factors...

- More ground covered in the panhandle area that caused an overall increase in unsheltered individuals
- More volunteer engagement leading to higher unsheltered numbers
- Closure of shelters/motels in some areas of the BoS
- Homeless Sweeps continuing in some areas of the BoS



2026 Point-in-Time Count

The Annual Point-in-Time Count (PIT) was conducted on the last 10 nights of January to identify the needs of households residing in Unsheltered locations (such as cars, streets, parks, etc) as well as Sheltered locations (Emergency Shelter and Transitional Housing). The PIT Count aims to provide a snapshot of the individuals and families experiencing homelessness in a geographical area, over the course of one night.



Demographic Information

Responses are self-report and/or observations and may not be representative of the entire population

Adults (25+)
7,997

Youth (18-24)
516

Children (0-17)
1,336

1,190 Adults



reported they are currently fleeing domestic violence

592 participants



Reported that they are a veteran

1,724 Adults



reported they are chronically homeless

1,185

Responded to having a Substance Use Disorder



1,788

Responded to having a Serious Mental Illness



Next Steps

- Upcoming Debrief meeting with PIT Leads
- Further Refinement of our HIC process
- Presentations for PIT count communities on their individual data
- Gathering and Analysis of “Statewide” PIT Data
 - Still waiting on receiving data from other communities outside the geography of the Balance of State. Will compile data and create an infographic for all statewide data to be used for homeless advocacy on the state and federal level.



ON TO 2027!!!





Contact Information

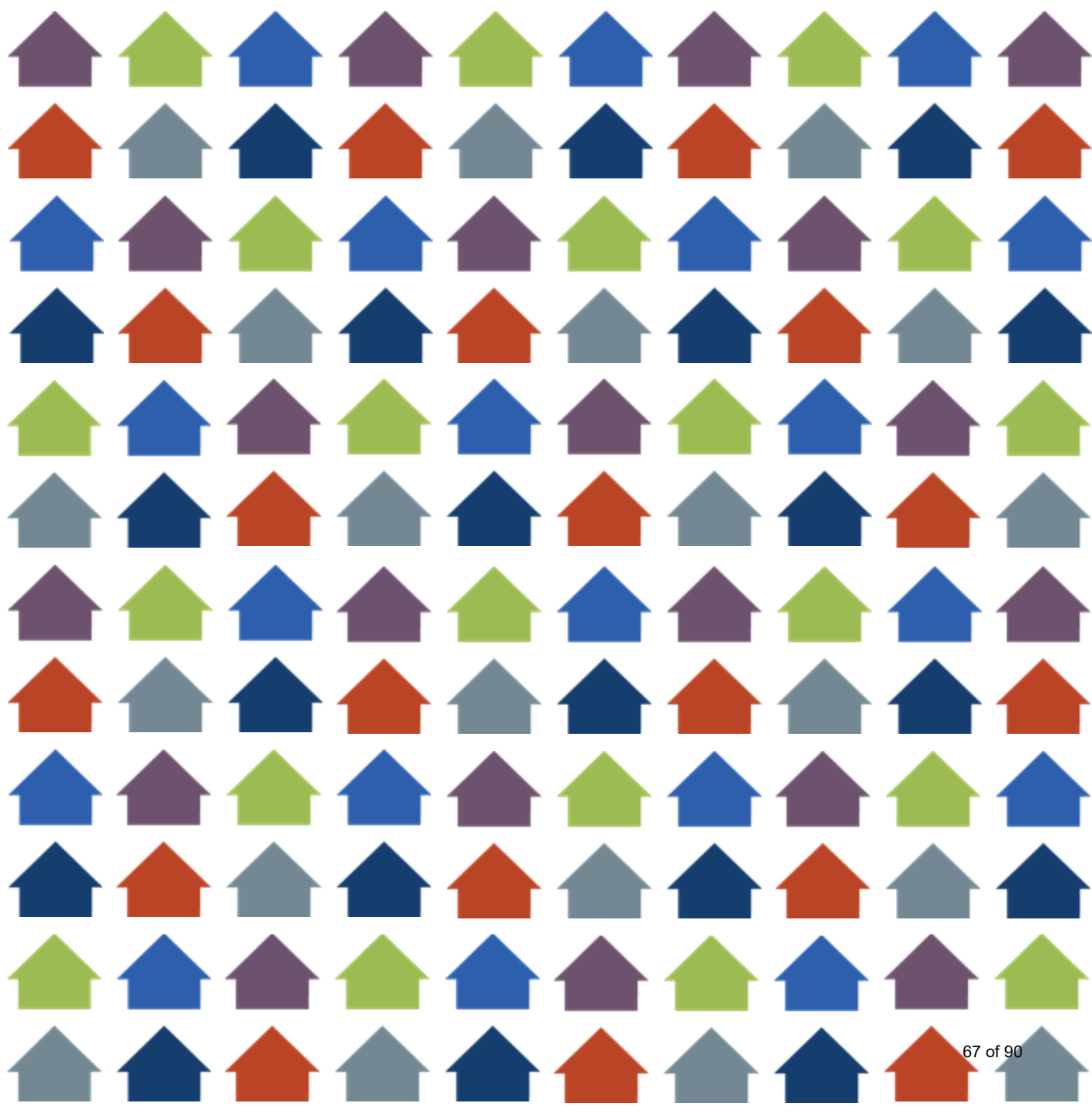
Ava Paredes
Data and Engagement Coordinator
Email: ava@thn.org
Phone: (512) 652-4714



Thank you!

Strategies For Change

thn.org



FY25 CoC Program NOFO High-Level Overview

April 29, 2026

Strategies For Change

FY25 CoC Program NOFO: Timeline & Status Update

- November 13, 2025: HUD released the FY25 CoC NOFO
- CoCs nationwide began preparing for local competitions with a short submission window
- A federal lawsuit challenging the FY25 NOFO was filed
- December 8, 2025: HUD rescinded the FY25 CoC NOFO



CoC Local Competition – Launch

- Prior to the NOFO being rescinded, the CoC:
 - Designed and launched a local competition on 12/1/25
 - Publishing application materials
 - Established new component types and funding caps
 - Solicited renewal and new project applications
- Process reflected HUD guidance and standard CoC practices



CoC Local Competition – Pause

- Following the federal lawsuit and HUD's rescission of the NOFO:
 - The CoC paused the local competition
 - No project review, ranking, or submissions moved forward per guidance
 - No longer an active or enforceable process to apply for new FY25 funding
- HUD provided guidance on how CoC's were to communicate intent to maintain renew existing projects

FY25 Renewal Letters of Intent

After the NOFO was rescinded:

- Following Board approval, the CoC submitted a Letter of Intent to HUD for FY25 renewal projects

The CoC's letter included:

- Individual Letters of Intent from all eligible renewal projects
- Submitted on January 26, 2026

CoC Board Leadership Through FY25

- Throughout the FY25 cycle, the CoC Board:
 - Provided direction as federal guidance evolved
 - Supported timely action when appropriate
 - Considered THN staff recommendations on addressing new funding caps while prioritizing populations with most severe needs
 - Guided decisions to pause when conditions changed
- CoC Board demonstrated:
 - Rapid responsiveness
 - Clear and strong governance
 - Adaptive decision-making under uncertainty



Questions?
txboscoc@thn.org



Thank you!

Strategies For Change

thn.org

A large, light green circular graphic is positioned on the right side of the slide, partially overlapping the main text. It consists of a thick outer ring and a smaller inner circle, creating a stylized 'C' or 'O' shape.

Coordinated Entry Assessment & Prioritization Redesign

**TX BoS CoC Spring 2026 General
Membership Meeting**

Agenda

01

Purpose & Goal

02

Who's Involved

03

Accomplishments

04

Focus Groups

05

Next Steps

06

Questions

What is Coordinated Entry (CE)?

A process where people experiencing homelessness can:

- access resources in the housing crisis response system in a streamlined way,
- have their strengths and needs quickly assessed using a standardized assessment tool and practices,
- be referred to appropriate housing and mainstream services tailored to their needs,
- while the most intensive interventions are prioritized for those with the highest needs

In short, CE is the process used to connect people experiencing homelessness to housing interventions and other supportive services.

Why Redesign Assessment & Prioritization Processes?

The TX BoS CoC currently uses the Vulnerability Index-Service Prioritization Decision Assistance Tool (VI-SPDAT)

- National research has shown race and gender-based differences in prioritization outcomes
- Domestic violence survivors are often not prioritized for housing
- The assessment includes re-traumatizing language and processes

What's the Goal?

The TX BoS CoC aims to develop a new Coordinated Entry Assessment and Prioritization process through collaboration with persons with lived experience of homelessness and direct service providers that live or work in the TX BoS CoC. Our goal is to create a process that will be data-informed, person-centered, and will more effectively serve those who are experiencing homelessness in the TX BoS CoC.

Who's Involved?

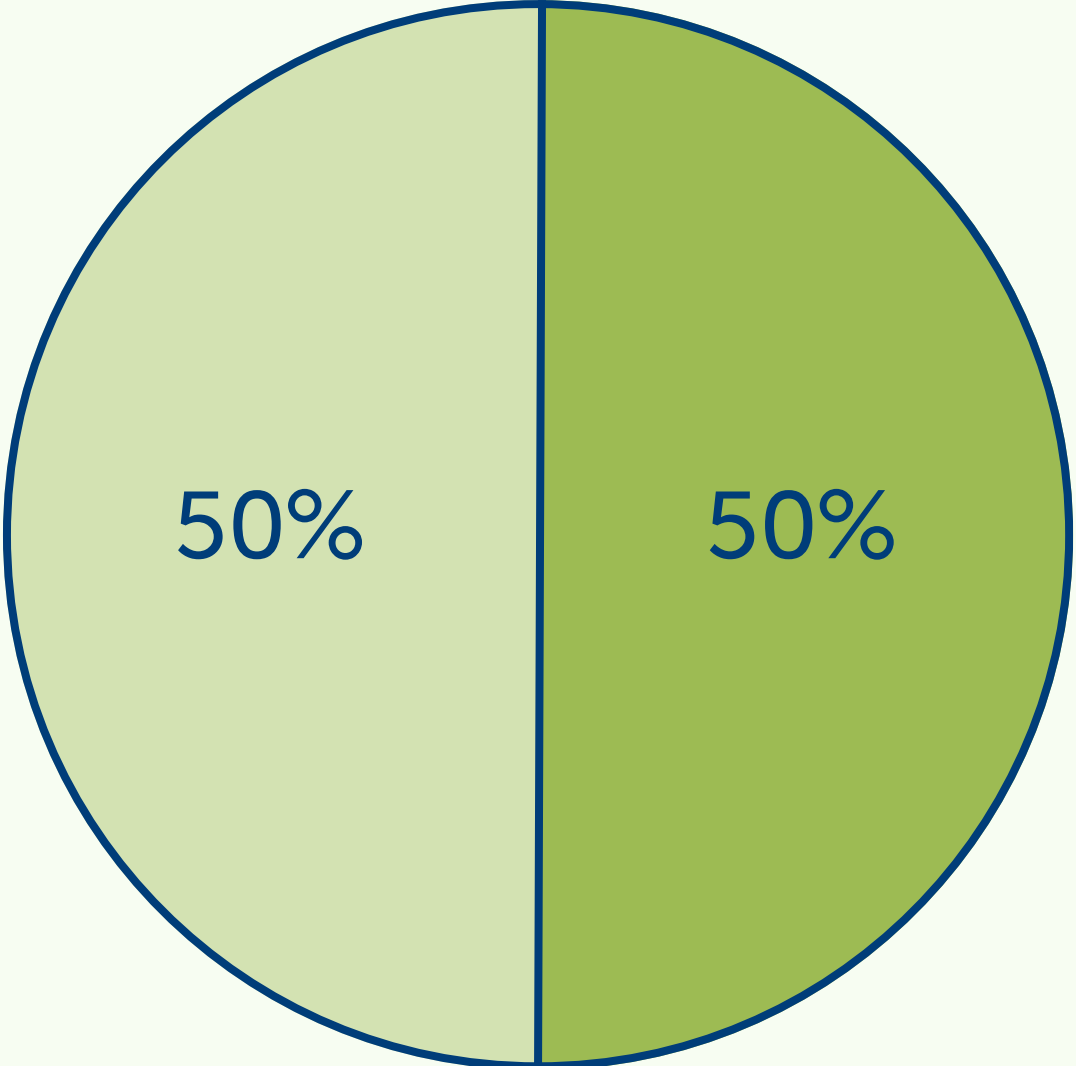
Texas Homeless Network's Systems Change Team	Coordinated Entry Assessment & Prioritization (CEAP) Redesign Workgroup
Homebase: HUD Technical Assistance Provider	Texas Council on Family Violence (TCFV)
Focus Group Participants	Dr. Ben King: Researcher at University of Houston & National Health Care for the Homeless Council
TX BoS CoC Lived Experience Committee	Texas Network of Youth Services (TNOYS)

CEAP Workgroup

Communities Represented:

- Bastrop
- Bell
- Bowie
- Comal
- Denton
- Galveston
- Nueces
- Potter
- Smith
- Taylor
- Victoria

Members with Lived Experience of Homelessness:



What We've Accomplished

Vulnerability Survey

THN staff surveyed TX BoS CoC providers on their definition of vulnerability. Providers gave feedback on what characteristics they felt made households the most vulnerable in their respective communities.

Vulnerability Indicators

THN staff & the CEAP Workgroup developed four vulnerability indicators based on the survey results from TX BoS CoC providers.

Prioritization Method

THN staff drafted prioritization schemes with the guidance of Homebase, TCFV, and prioritization references from other CoCs. THN staff presented options to the CEAP Workgroup, which then selected the method that will be used.

What We've Accomplished

Assessment Factors

With the four indicators defined, the CEAP Workgroup brainstormed all possible factors that may need to be assessed in each category. THN staff & the workgroup narrowed down the factors into a working list.

Project Review

THN staff reviewed all project decisions so far, to ensure that all steps had been data-informed, informed by persons who would be impacted by the work, and to ensure that all decisions had been well documented.

Assessment Drafting

THN staff & the CEAP Workgroup brainstormed assessment questions for each factor that was selected for assessment drafting. Workgroup members referenced other CoC's assessments and guidance provided by Homebase TA. 200+ questions developed.

What We've Accomplished

Assessment Refinement

THN staff used a 10-point rubric to review all drafted assessment questions and narrow them down. Staff compared questions to other CoC's assessments and completed three rounds of review. Edits were made and reviewed with the CEAP Workgroup & the Lived Experience Committee.

Assessment Scripts

THN staff developed scripts and section headers to supplement the assessment questions and ensure that clients receive the information they need throughout. Scripts were reviewed and edited with the CEAP Workgroup & the Lived Experience Committee.

Focus Group Prep

THN staff worked with Homebase to develop a plan for focus groups to get additional feedback on the assessment prior to piloting. We currently have three confirmed host sites and hope to hold four total focus groups.

Focus Groups

- Focus groups are vital to ensuring that the new assessment is accessible and will foster a supportive, client-centered experience.
- Focus groups will be held this summer to get further input from persons with lived experience of homelessness in the TX BoS CoC, and will be facilitated by Homebase
- Participants will provide feedback on assessment phrasing, length, question order, etc.

HOST COMMUNITIES
Bell County (Temple/Killeen)
Tom Green County (San Angelo)
Webb County (Laredo)
#4 TBD

What's Next?

FUTURE PROJECT MILESTONES

1. Develop robust training materials & assessor guidance
2. Pilot the new assessment and prioritization processes
3. Update all CoC CE policies, procedures, & guiding documents
4. Build out HMIS workflow changes
5. CoC-wide implementation
6. Continuous evaluation & process improvement

Questions

Email

ce@thn.org

Member Input and Open Discussion

Texas Conference on Ending Homelessness

- September 23-25, 2026
- Houston, TX

- Next CoC General Membership Meeting:
 - September 23, 2026, in person in Houston and virtual

Thank You for Attending





Hope Rodgers, LMSW
Senior Director of CoC
Programs
Hope@thn.org



Contact Information

Strategies For Change

thn.org